

# Missoula County Control Point Datasheet

Monument Description: 3-1/4" Aluminum Cap 3326S

Project Name: Ninemile

Station Description: 1/4 Corner

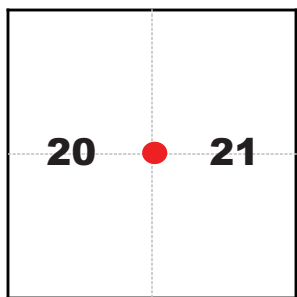
Date Visited: Sept. 9, 2010

Monument Stability: C+      GPS Visibility: B

Observer: SEN - CLG

Quad. Name: Alberton

T. 15 N. R. 22 W.



### NAD 83 (2007) Lat/Long Position

47°02'42.106"N

114°23'53.644"W

NAVD 88 Elevation: 3007.1 sft

Notes:

Photo of Monument



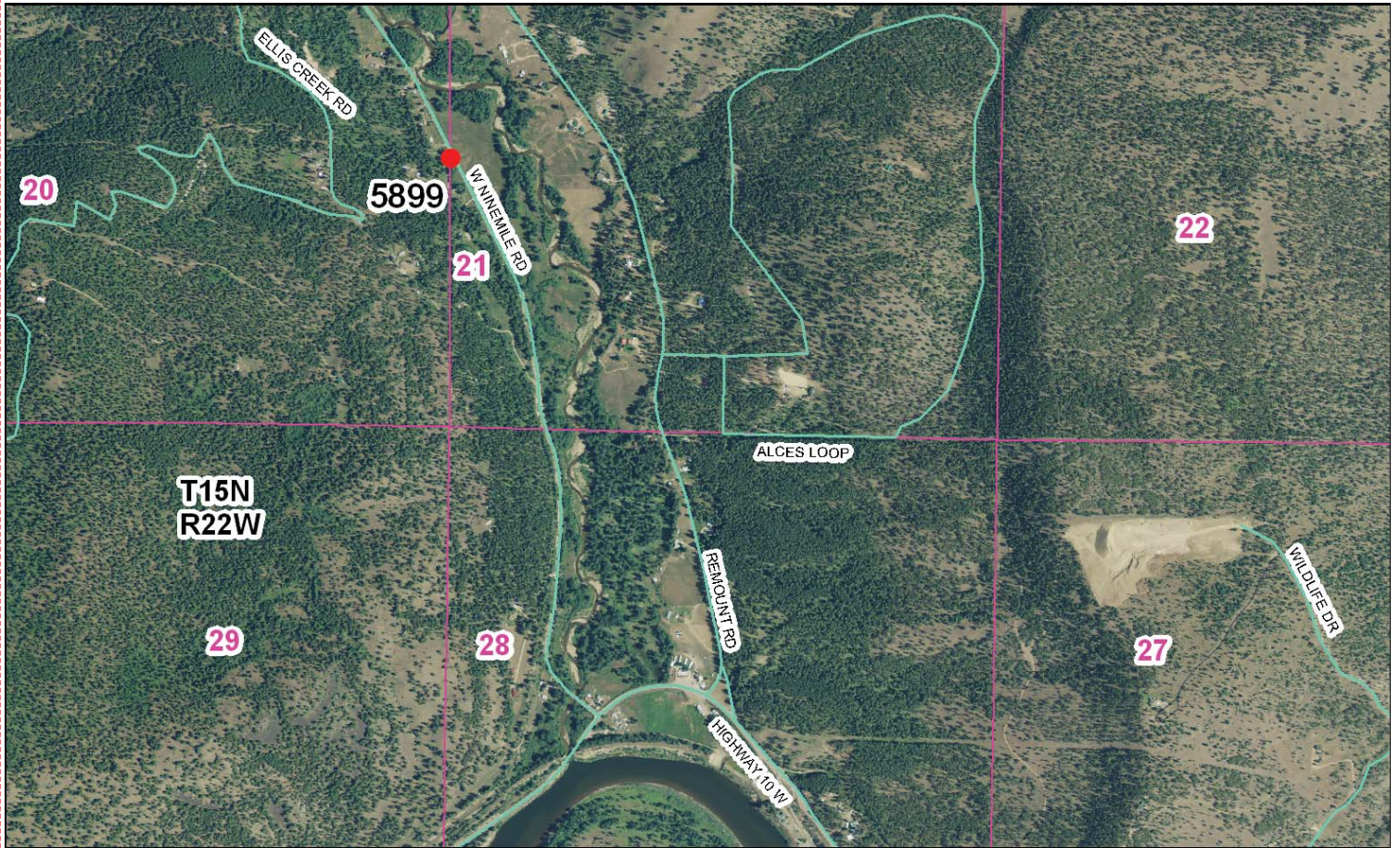
Photo Looking North



Photo Looking South



**To Reach:** 2wd access, monument is in the center of the northbound lane of West Ninemile Road.



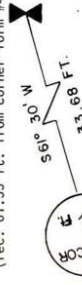
Map of Area

**INSTRUCTIONS**  
 1. Original and/or subsequent record used to evaluate the corner position.  
 2. Description of monument and accessories in the record, state method of establishing, lot or observed corners, location of evidence found, note discrepancies in the record, state method of establishing lot or observed corners.  
 3. Description of monument and accessories set to perpetuate the corner position.  
 4. Description of monument and accessories set to perpetuate the corner position.  
 5. Certification must be signed and sealed by Registered Land Surveyor in State of Montana.  
 6. This is Civil Justice & Arbitration Act of Montana.

**CERTIFIED CORNER RECORDATION**  
 Corner  $\frac{1}{4}$  cor., 20, 21 T. 15N R. 22W P.M.M. Missoula County

**RECORD:** (G.L.O. NOTES 1882) "Set a post 3 ft. long 3 ins. square 24 ins. in ground for  $\frac{1}{4}$  sec. cor. marked  $\frac{1}{4}$  S on W face from which a pine 50 ins. diam. bears N58°E 14 lks., dist. marked  $\frac{1}{4}$  S. B.T. A red fir 12 ins. diam. bears S42°W 63 lks. dist. marked  $\frac{1}{4}$  S. B.T.  
**RECORD:** C.O.S. #1438  
**RECORD:** Corner recordation form #442834

**FOUND:** A 2 $\frac{1}{2}$  in. Brass cap (marked as shown below) which bears S61°30'W a distance of 33.68 ft. (rec. from corner #442834), a power pole with P.K. nail up 15 ft. which bears S16°30'W a dist. of 46.81 ft. (rec. from corner #442834), a power pole with P.K. nail up 11 ft. which bears S39°W a dist. of 61.48 ft. (rec. 61.55 ft. from corner form #442834).



(See corner form #442834 for further info)

**SET:** A 3 $\frac{1}{2}$  in. Berntsen Aluminum monument 0.1 ft. below surface of road pavement.  
 (2-27-81) Missoula County Yellow location tags affixed on Power poles.

For Missoula County

**CERTIFICATION**  
 I, Horace S. Brown Jr., certify the information shown herein is true and correct.  
 Separately Certified by: Donald L. Ebbutt  
 By my hand and the seal of my office this 27th day of December, 1981.  
 Registered Asst. Prof. Surveyor, State of Montana  
 Date: 12/27/81, Reg. No. 33265  
 Signature of Registration  
 Employer: Missoula County

**SKETCH OF CORNER 490614**  
 Office of Clerk and Recorder, County of Missoula, This "corner"  $\frac{1}{4}$  Corner Sec. 20 & 21 record" was filed for record on the 27th day of 1981 in 20 & 21, in 15N 22W County Official P-9 T-22W P.M.M. book No. 490614 Cross Index No. 490614 DEPUTY

Corner Recordation Form or Other Supporting Document