

Missoula County Control Point Datasheet

Monument Description: 2-1/2" Brass Cap in concrete 1828S

Project Name: Ninemile

Station Description: Section Corner

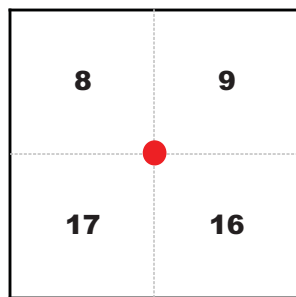
Date Visited: Sept. 8, 2010

Monument Stability: C GPS Visibility: B

Observer: SEN - CLG

Quad. Name: Alberton

T. 15 N. R. 22 W.



NAD 83 (2007) Lat/Long Position

47°04'00.192"N

114°23'54.071"W

NAVD 88 Elevation: 3157.5 sft.

Notes:

Monument is 8" below road surface,
need traffic cones.

Photo of Monument



Photo Looking North

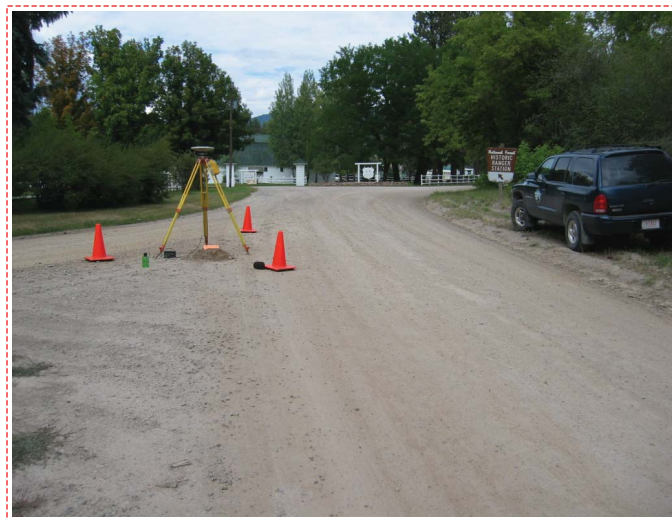
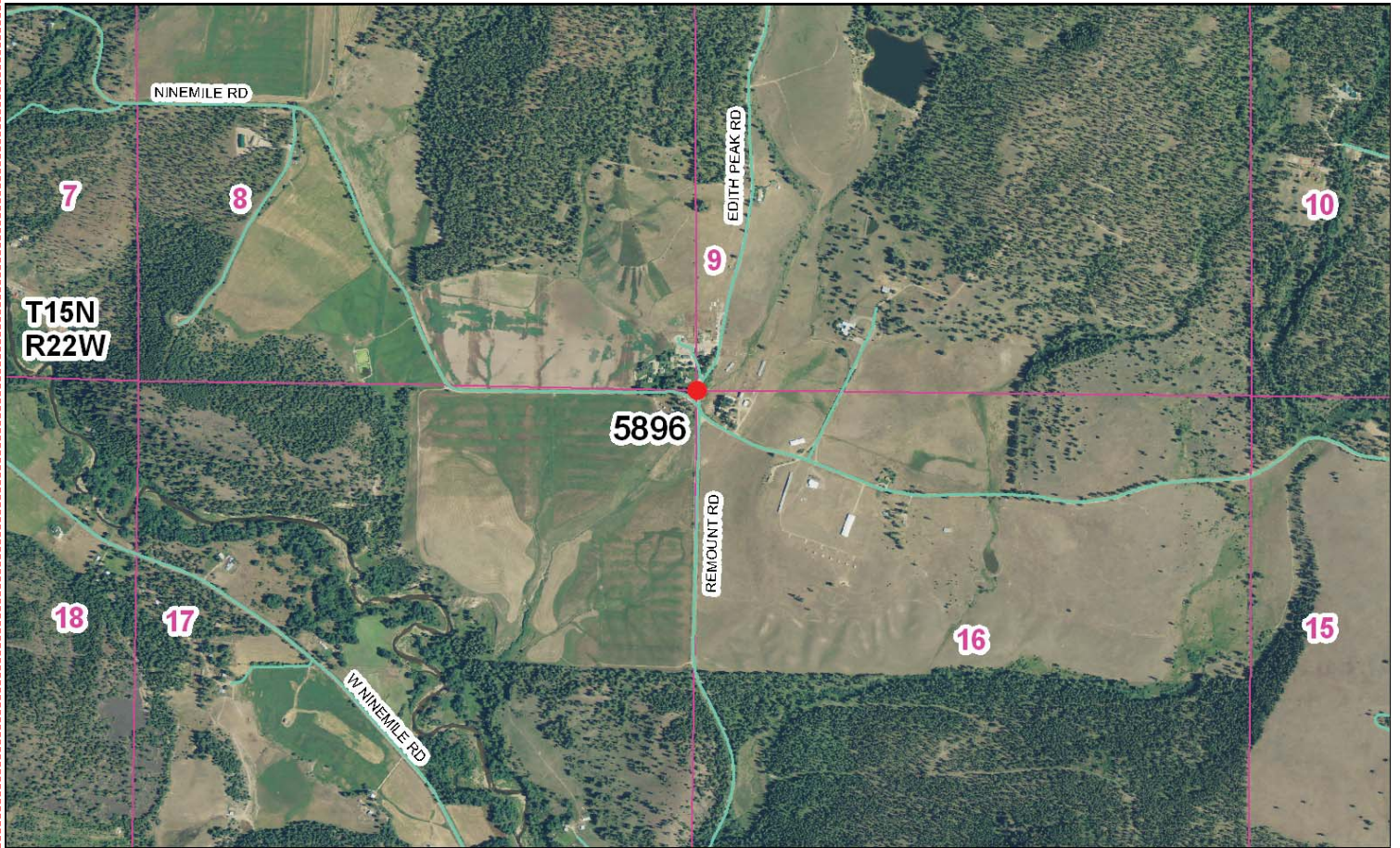


Photo Looking South



Point # 5896

To Reach: 2wd access.



Map of Area

RI-5680-1 (Revised 10/63)

CERTIFIED LAND CORNER RECORDATION
(REFERENCE FSN 5681.65)

DESCRIPTION OF CORNER EVIDENCE FOUND, AND ORIGINAL RECORD (IF KNOWN)

The Northeast Corner of Section 17, T. 15 N., R. 22 W., Principal Meridian, Montana, Missoula County, Montana. Record says, "Set a post 4 ft. long, 4 ins. square, 24 ins. in the ground for cor. to Sec's. 8, 9, 16, & 17 marked T. 15N. S. 9 on NE, R. 22 W. S. 16 on SE, S. 17 on SW, and S. 8 on NW faces, with 4 notches on S and E edges, from which:-
 A pine 30 ins. diam. bears N 15° E 41 lbs. dist. marked T. 15N., R. 22W. Sec. 9 SW.
 A pine 10 ins. diam. bears N 75° W 60 lbs. dist. marked T. 15N., R. 22W. Sec. 9 SW.
 A pine 10 ins. diam. bears S 15° W 74 lbs. dist. marked T. 15N., R. 22W. Sec. 17 NE.
 A pine 10 ins. diam. bears S 20° E 55 lbs. dist. marked T. 15N., R. 22W. Sec. 16 SW.

Evidence of a wooden post found beneath 2 feet of road fill, which was confirmed by a local rancher as the original corner. No bearing trees were found. Corner is in the road entrance to the Mineville Ranger Station.

DESCRIPTION OF MONUMENT AND ACCESSORIES ESTABLISHED TO PERPETUATE THE ORIGINAL LOCATION OF THIS CORNER:

A concrete monument with a brass cap inset was set six inches below Date of work: Dec. 1967
 the surface of the road.

New Bearing Trees

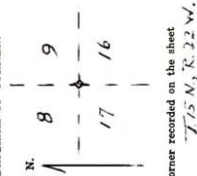
- A 14 inch ponderosa pine bears S 75° 00' E a distance of 39.70 feet.
- A 12 inch spruce tree bears N 30° 30' W a distance of 47.50 feet.
- A 10 inch spruce tree bears N 65° 30' W a distance of 54.20 feet.

The bearing trees are scribed 1/4", and measurements are made from the corner to the center of the trees.

SKETCH, WITH COURSE AND DISTANCE TO ADJACENT CORNERS IF DETERMINED IN THIS SURVEY. (MAY SKETCH OR PASTE REPRODUCTION ON REVERSE SIDE)

Corner was established from evidence at the corner site, rather than from measurements along the section lines.

DIAGRAM OF CORNER:



I, _____, certify that the information shown herein is true and correct.

Signature of Ground Party Chief

I, Robert V. Steele, do hereby certify that I have carefully examined the work done on the described corner as reported on this recordation form and approve the same.

Signature of Surveyor
 T15 N., R. 22 W.

Surveyor's Seal



267076
 Registration Number

Office of Clerk and Recorder, County of Missoula

This "corner record" was filed for record on the 4 day of June 1967 at _____

assigned page No. _____ in book No. _____ Mer. Cross Index No. J. (2) T. 15 N. R. 22 W. Mer. 159