

Missoula County Control Point Datasheet

Monument Description: 2-1/2" Brass cap 2923S

Project Name: Ninemile Storage

Station Description: 1/4 Corner

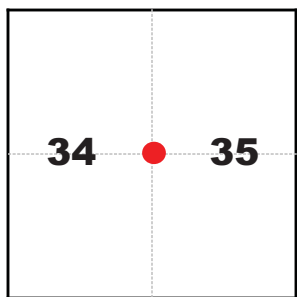
Date Visited: Oct. 17, 2008

Monument Stability: C GPS Visibility: C-

Observer: SEN

Quad. Name: Huson

T. 15 N. R. 22 W.



NAD 83 (2007) Lat/Long Position

47°00'57.430"N

114°21'22.488"W

NAVD 88 Elevation: 3068.8 sft.

Notes:



Photo of Monument



Photo Looking North



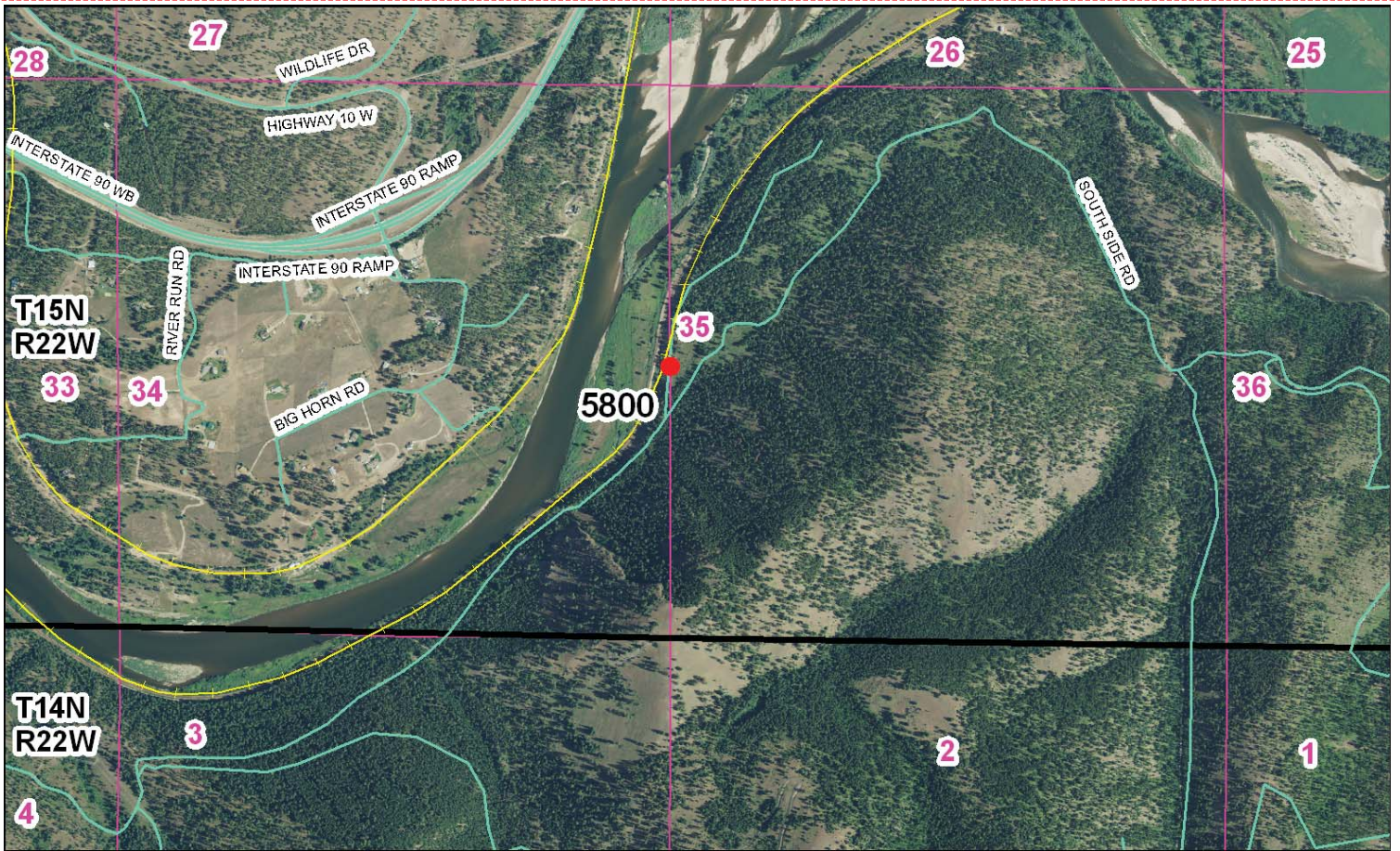
Photo Looking South



Photo Looking West



To Reach: 2wd access to within 200 feet of the monument.



Map of Area

CERTIFIED LAND CORNER RECORDATION

DESCRIPTION OF CORNER EVIDENCE FOUND, AND ORIGINAL RECORD (IF KNOWN)

At the 1/4 corner common to Sections 34 & 35, Township 15 North, Range 22 West, Missoula County, Montana.
RECORD: Set post 3 feet long 3 inches square, 24 inches in ground for 1/4 Section corner marked 1/4S, on West face from which: a Pipe 12" in diameter bears N.55°W. 43 links distance marked 1/4S, B.T.
 A Pipe 30" in diameter bears S.10°E. 23 links distance marked 1/4S, B.T.
WE FIND: Both bearing trees alive and standing and according to record no evidence of 1/4 corner post.

DESCRIPTION OF MONUMENT AND ACCESSORIES ESTABLISHED TO PERPETUATE THE ORIGINAL LOCATION OF THIS CORNER:

Date of work: 3/20/73
 WE ESTABLISH this corner by use of original bearing trees. TO PERPETUATE this corner we set a 30" pipe with 2 1/2" brass cap and establish the following reference monuments:
 See Record.



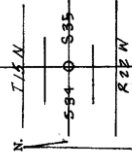
SKETCH, WITH COURSE AND DISTANCE TO ADJACENT CORNERS IF DETERMINED IN THIS SURVEY. (MAY BE A SKETCH OR PASTE REPRODUCTION ON REVERSE SIDE.)

"SEE ATTACHED SKETCH"

Surveyor's Seal



DIAGRAM OF CORNER:



I, Gregory S. Martinson, certify that the information shown herein is true and correct.

Richard A. Ainsworth
 Registered Professional Surveyor

I, Richard A. Ainsworth, certify that I have carefully performed or reviewed the work done on the diagrammed corner as reported on this recordation form, and approve the same.

Richard A. Ainsworth
 Signature of Surveyor

2923S
 Registration Number

386066

Office of Clerk and Recorder, County of Missoula, Montana, Book No. 12, Page 11

This "corner record" was filed for record on the 13 day of Aug, 1973, was not on the cross-index plat and is assigned page No. 507

FORM 128-41-03
 ROBERT E. ARRAS, County Clerk
 By: *Robert E. Arras*
 Deputy

County Official
 Cross Index No. X.17 T.15N R.22W Mer.