

Missoula County Control Point Datasheet

Monument Description: 2" Aluminum Cap 9747LS

Project Name: ALL

Station Description: 1/4 Corner

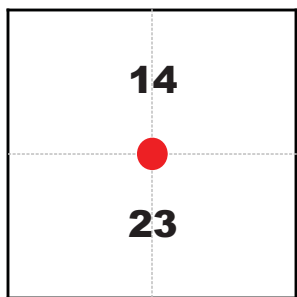
Date Visited: May 13, 2009

Monument Stability: C+ GPS Visibility: C+

Observer: SEN - CLG

Quad. Name: Huson

T. 15 N. R. 22 W.



NAD 83 (2007) Lat/Long Position

47°03'07.835"N

114°20'44.552"W

NAVD 88 Elevation: 3134.1 sft.

Notes:



Photo of Monument



Photo Looking North

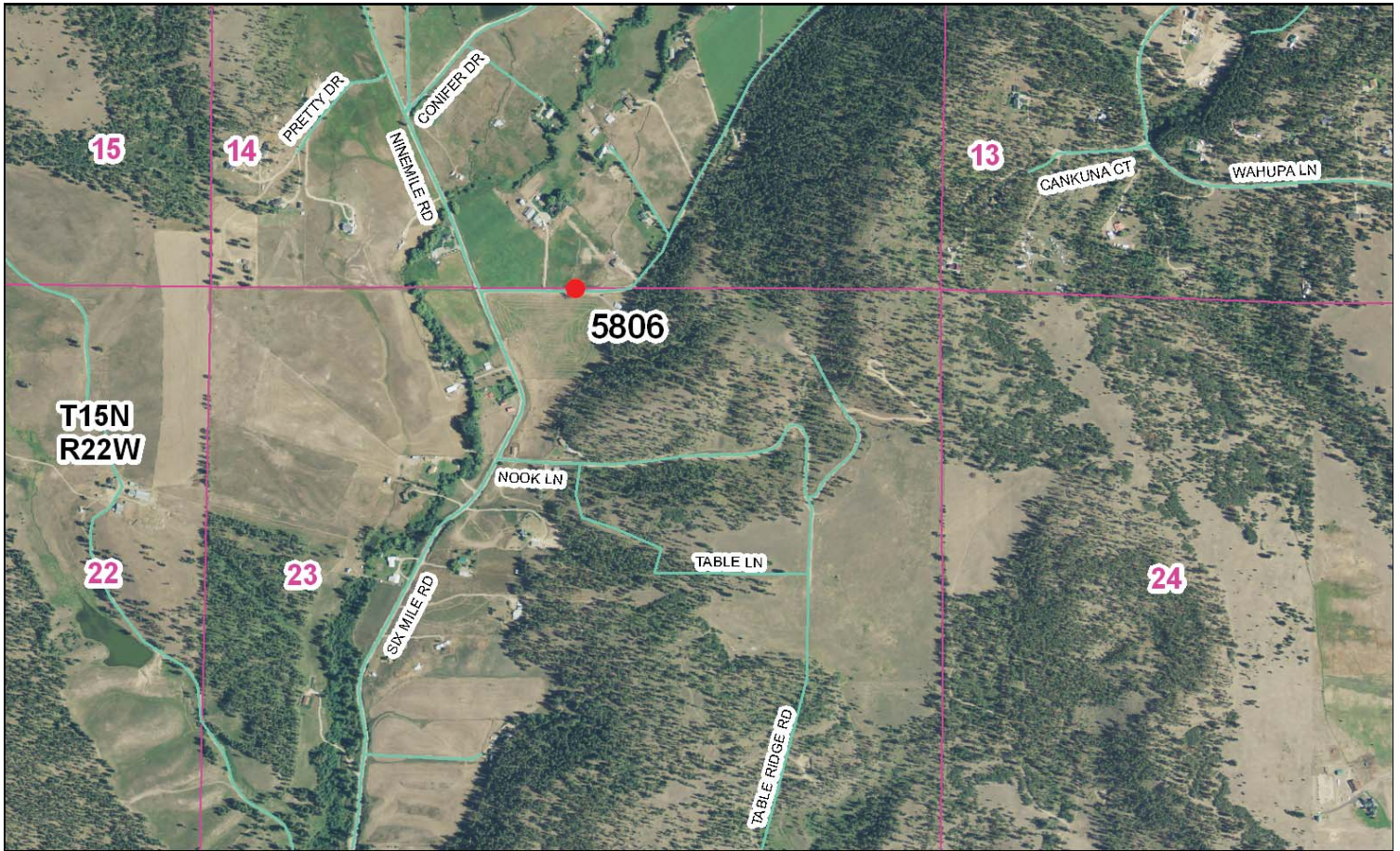


Photo Looking East



Photo Looking West





Map of Area

163-2155

- INSTRUCTIONS**
1. Identify all instruments recorded in the county.
 2. Locate the instrument on the plat and interpret the correct, clear method of establishing and/or abstracting corners.
 3. Describe the monument and accessories to its particular corner position.
 4. Sketch of corner, show all pertinent data which can best be shown in a sketch's example: corner marking, topographic iron, position of accessories, etc. (See Land Surveyor registered in the State of Montana.)
 5. Fill in Cross Index & Section Diagram at bottom of sheet.

CERTIFIED CORNER RECORDATION

Corner S 1/4 Cor. Sec. 14 T. 15N R. 22W P.M.M. Missoula County

Record: (1882) Set a post 3ft long, 3 ins. square, 24 ins. in ground for 1/4 sec. cor. marked "1/4" on N face from which a pine 14 ins. diam bears N21°05' 183 lks. dist marked "458T". A pine 24 ins. diam bears S63°05' N 240 lks. dist marked "458T".

(1964) I buried a reinforced concrete post 4"x4"x36", 32" in the ground. The post is marked on top as per sketch. "1/4" is marked on E face. "21W" is on the N. face.

A pine 28" diameter bears S53°05' N 803' distance scribed "20625 RM"
 A pine 13" diameter bears S81°05' N 410.0' distance scribed "20625 RM"

Found: (1996) No evidence of the concrete monument was found. Both (1964) bearing trees are present.

Set: At the distance intersection of the existing bearing trees, set a 5/8" x 24" Rebar w/ 2" Alum. cap stamped as shown below.

A pine 26" diam. bears S52°05' N 80.3 feet dist. blazed & scribed "20625 RM"
 A pine 18" diam. bears S82°26' E 410.0 feet dist. blazed & scribed "20625 RM"

No other Accessories established

9602923 SKETCH OF CORNER

CERTIFICATION
 I, Jeff C. Zeier, certify the information above is true, accurate and correct.
 I, Jeff C. Zeier, Registered Professional Engineer & Land Surveyor, State of Montana, No. 2155, do hereby certify that the above information was prepared by me or under my direct supervision and that I am a duly licensed and registered Professional Engineer & Land Surveyor in the State of Montana.
 DATE: 10/13/1996
 SIGNATURE: [Signature]

Office of Clerk and Recorder, County of Missoula. This "corner record" was filed for record on Feb. 13, 1996 at 10:43 AM was noted on the cross-index plat and is assigned page No. 2155 in book No. 463 Picard **MISSOULA, MT** County Official
 Cross Index No. N-19 T. 15N R. 22W P.M.M. corner this sheet 463-2155