

Missoula County Control Point Datasheet

Monument Description: 1-1/2" Brass Cap 2518S

Project Name: All

Station Description: 1/4 Corner

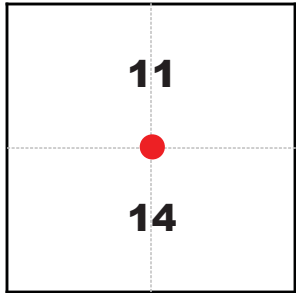
Date Visited: May 13, 2009

Monument Stability: D GPS Visibility: C-

Observer: SEN - CLG

Quad. Name: Huson

T. 15 N. R. 22 W.



NAD 83 (2007) Lat/Long Position

47°04'00.084"N

114°20'44.920"W

NAVD 88 Elevation: 3312.6 sft

Notes:

Photo of Monument



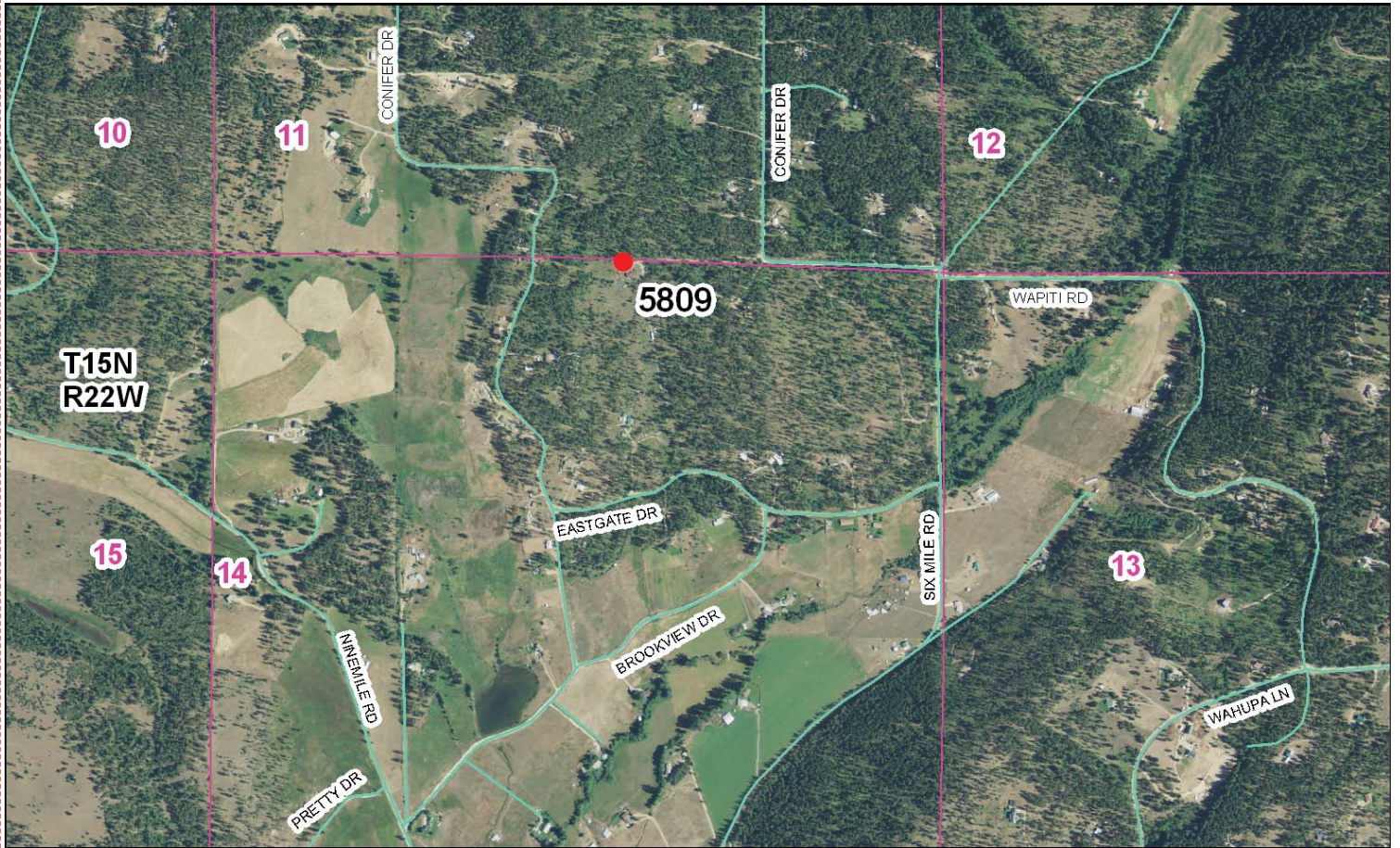
Photo Looking Southeast



Photo Looking Southwest



To Reach: 2wd access to within 300 feet of the monument. Ask permission at the property addressed as 21594 Conifer Drive, accessed off of Sixmile Road.



Map of Area

CERTIFIED CORNER RECORDATION

Corner 1/4 Sec. 14 T. 15N R. 22W P.M.M. Missoula County

RECORD GLO - Not Available

RECORD: Certified Corner Recordation Form for the W 1/4 Sec. 2, T15N, R22W; Doc. No. 320591 and the exhibit of survey on the reverse side "A retracement survey and subdivision of Section 11, Township 15 North, Range 22 West, PMW, Missoula County, Montana" by Surveyor No. 29235


FOUND: 1 1/2" Brass Cap on 1" Pipe

M.E. Davis
S 14
1/4
T15N R22W
1976
2518S

Field information shown herein was performed on 3-22-83 and the corner was shown on Certificate of Survey No. 2901. This corner recordation form has been prepared and recorded per the December 20, 1994 letter by the Missoula County Attorney.

CERTIFICATION

I, certify, the information shown herein is true and correct.

Signature of Notary Public

 Thomas P. McCarthy
 Notary Public, State of Missouri
 Commission Expires 1/95, No. 44685
 WGN Group

Office of Clerk and Recorder, County of Missoula, This "corner record" was filed for record on the 31 Jan at 9:27 am day of 1975 was noted on the cross index plat and is assigned page No. 226, in book No. 434 MISSOULA COUNTY CLERK DEPUTY

From Index file J-19 T. 15N R. 22W P.M.M. MISSOULA

Sec. 11

CR +

434-226

Corner Recordation Form or Other Supporting Document