

Missoula County Control Point Datasheet

Monument Description: 1-1/2" Brass Cap 858ES

Project Name: All

Station Description: 1/4 Corner

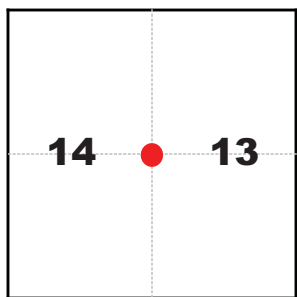
Date Visited: May 13, 2009

Monument Stability: C GPS Visibility: D

Observer: SEN - CLG

Quad. Name: Huson

T. 15 N. R. 22 W.



NAD 83 (2007) Lat/Long Position

47°03'33.690"N

114°20'07.027"W

NAVD 88 Elevation: 3207.6 sft.

Notes:



Photo of Monument



Photo Looking North



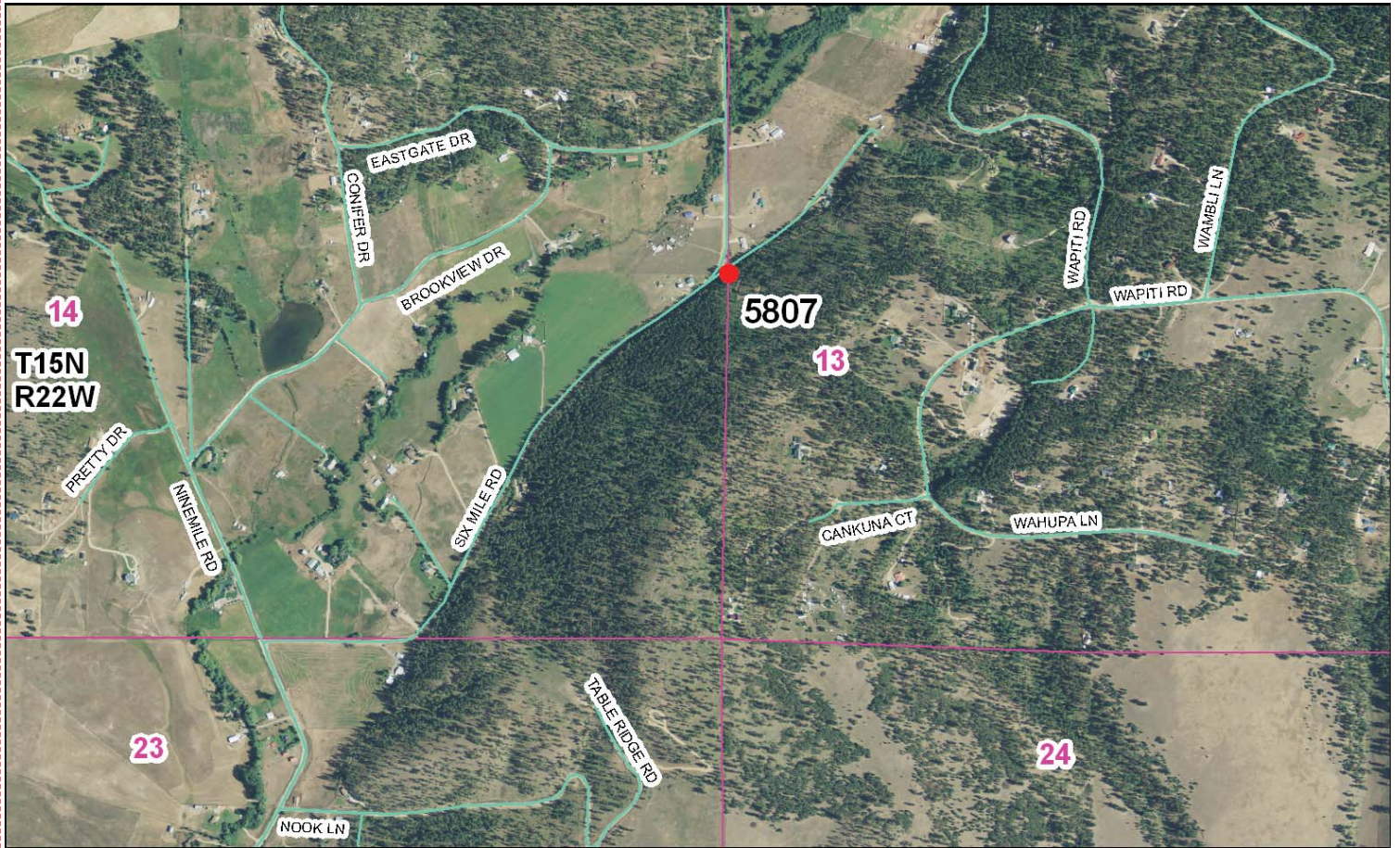
Photo Looking East



Photo Looking South



To Reach: 2wd access to within 50 feet of the monument.



Map of Area

41-1150-1

CERTIFIED LAND CORNER RECORDATION
(reference form 151-53)

DESCRIPTION OF CORNER EVIDENCE FOUND, AND ORIGINAL RECORD (IF KNOWN)

RECORD: Sandstone 18 x 16 x 6 inches in ground 1/4 on west face from which a pine 30 inches in diameter bears S20°E 21 links. A pine 12 inches in diameter bears N15°W 91 links.

FOUND: A Davis & Tillotson 1 1/2 inch copper well monument
Pine stump remains at record S20°E 21 links. No sign of stone, other bearing tree falls in a roadway.

DESCRIPTION OF MONUMENT AND ACCESSORIES ESTABLISHED TO PERPETUATE THE ORIGINAL LOCATION OF THIS CORNER:
Date of work: 1-27-77

O 50' x 16" x 6" sandstone placed on west face from which a pine 30 inches in diameter bears S20°E 21 links. A pine 12 inches in diameter bears N15°W 91 links. BY TILLOTSON C.S. # 351
1 1/2" COPPER WELL MONUMENT
BY DAVIS

This corner was set by a Davis and Tillotson survey of Section 14 -- 1968 -- 70
SKETCH, WITH COURSE AND DISTANCE TO ADJACENT CORNERS IF DETERMINED IN THIS SURVEY.
(MAY SKETCH OR PASTE REPRODUCTION ON REVERSE SIDE.)

DIAGRAM OF CORNER:
N. R22W
T15N 14 | 13
= Corner recorded on the sheet

Surveyor's Seal: Marc Carstens
I, Marc Carstens, certify that the information shown herein is true and correct.
Signature of Ground Party Chief: Marc Carstens
Robert J. Shelton
I, Robert J. Shelton, certify that I have carefully performed or reviewed the work done on the diagrammed corner as reported on this recordation form and approve the same.
Signature of Surveyor: Robert J. Shelton

352857
352858
Registration Number

Office of Clerk and Recorder, County of Moheada
This "corner record" was filed for record on the 18th day of January, 1977, was noted on the cross-index plat and is assigned page No. 504 Ca. in book No. 1-21 T. 15N R. 22W Mer.
ROBERT E. ARIAS, County Clerk
By Robert J. Shelton DEPUTY

Corner Recordation Form or Other Supporting Document