

# Missoula County Control Point Datasheet

Monument Description: 4" Iron Cap 3326S

Project Name: All

Station Description: Section Corner

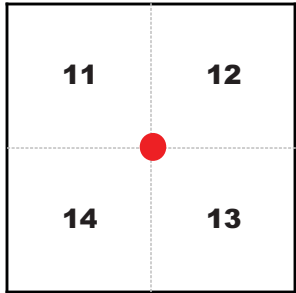
Date Visited: May 13, 2009

Monument Stability: C+      GPS Visibility: C-

Observer: SEN - CLG

Quad. Name: Huson

T. 15 N. R. 22 W.



NAD 83 (2007) Lat/Long Position

47°03'59.273"N

114°20'07.255"W

NAVD 88 Elevation: 3268.1 sft.

Notes:

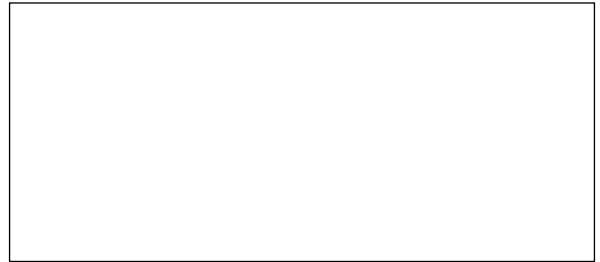


Photo of Monument



Photo Looking North



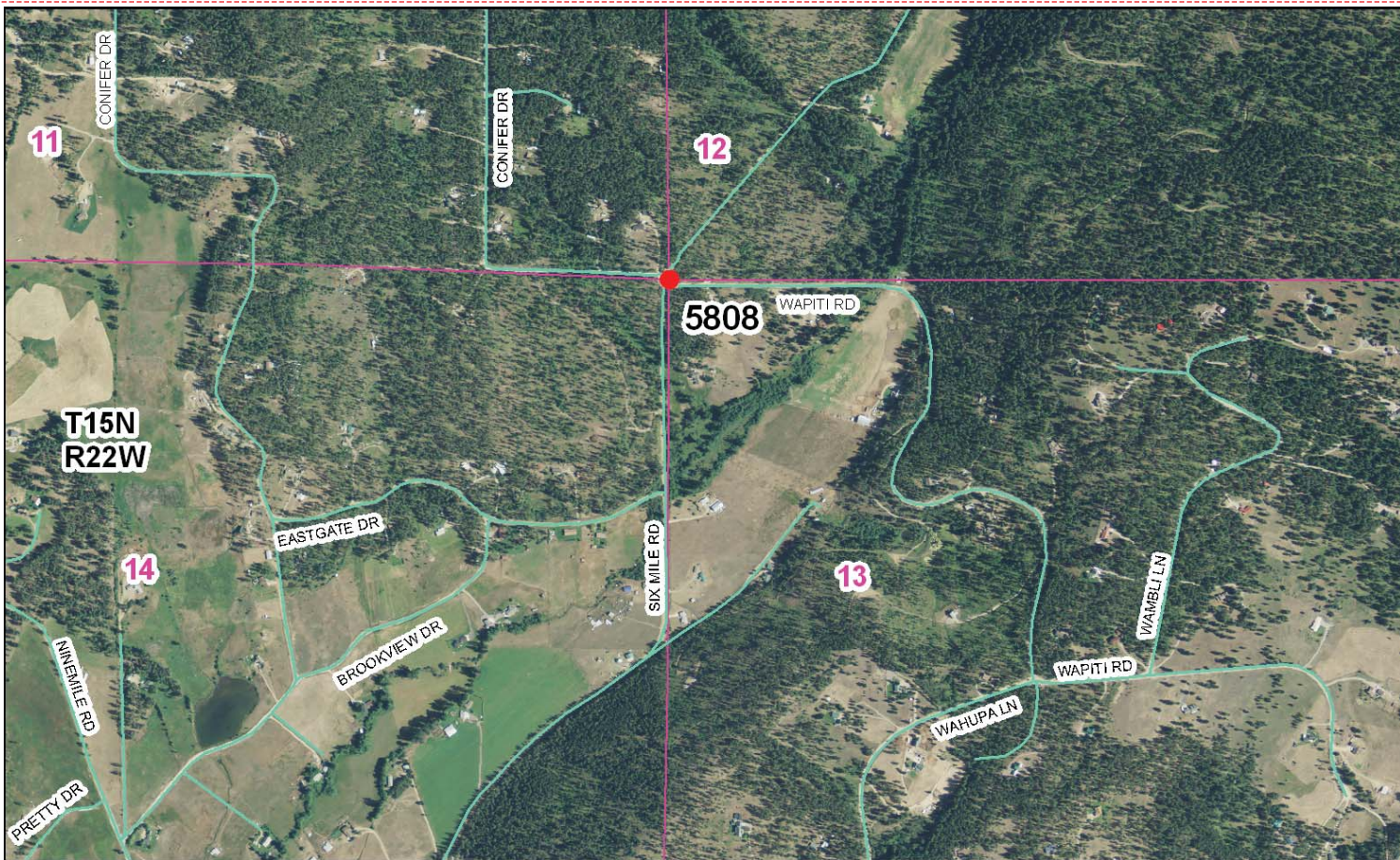
Photo Looking East



Photo Looking West



To Reach: 2wd access.



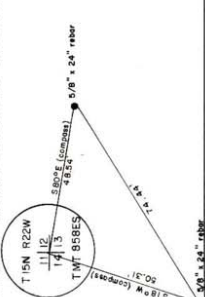
Map of Area

**CERTIFIED LAND CORNER RECORDATION**

DESCRIPTION OF CORNER EVIDENCE FOUND, AND ORIGINAL RECORD (IF KNOWN)  
 RECORD: (G.L.O. Notes 1882) "Set a sandstone 18 x 14 x 6 ins., 12 ins. in the ground for cor. to sec. 13, 14, 11, and 12 marked with 4 notches on S. and 1 on E. from which:  
 A Pine, 30 ins. diam. bears S20°04', 55 lks. dist. marked T15N, R22W, S14, B.1.  
 A Pine, 24 ins. diam. bears S30°06', 43 lks. dist. marked T15N, R22W, S13, B.1.  
 A Pine, 20 ins. diam. bears N25°06', 88 lks. dist. marked T15N, R22W, S12, B.1.  
 A Pine, 28 ins. diam. bears N35°04', 43 lks. dist. marked T15N, R22W, S11, B.1."  
 RECORD: See Recordation Form No. 393856.  
 FOUND: A 1 1/2 inch Brass cap marked as shown on 9/16/80. Corner referenced by 2 rebars before construction as shown below.  
 A Ponderosa Pine, 14 ins. DBH, bears S66°06', 13.7 ft. scribed R.M. (recordation form #393856)  
 A Douglas Fir, 18 ins. DBH bears N64°06', 45.4 ft. scribed R.M. (recordation form #393856)

DESCRIPTION OF MONUMENT AND ACCESSORIES ESTABLISHED TO PERPETUATE THE ORIGINAL LOCATION OF THIS CORNER:

Date of work: 10/31/80



SKETCH, WITH COURSE AND DISTANCE TO ADJACENT CORNERS IF DETERMINED IN THIS SURVEY. (MAY SKETCH OR PASTE REPRODUCTION ON REVERSE SIDE.)



Harrison Monument marked as shown

SET: A Harrison Monument on 10/31/80, 4 inches x 30 inches, 0.2 ft. below surface marked as shown:  
 A Ponderosa Pine, 8 ins. DBH, bears N76°04', 97.4 ft. scribed R.M.  
 A Ponderosa Pine, 9 ins. DBH, bears S07°04', 54.9 ft. scribed R.M.  
 NOTE: Msla. Co. location tags affixed to found and set bearing trees.

Surveyor's Seal  
 I, HORACE S. BROWN JR., certify that the information shown herein is true and correct.  
 Signature of Ground Party Chief  
 Donald L. Ebbutt  
 I, certify that I have carefully performed or reviewed the work done on the diagrammed corner as reported on this recordation form and approve the same.  
 Signature of Surveyor  
 Corner recorded on the sheet  
 33265  
 Registration Number  
 482731  
 For Missoula County

Office of Clerk and Recorder, County of Missoula  
 This "corner record" was filed for record on the 2nd day of Feb. 1981 by Don L. Ebbutt, County Official.  
 assigned page No. 30891 in book No. 1-21  
 Cross Index No. J-21 T. 15N R. 22W P. M. Mer.  
 FORM 125-41493

**Corner Recordation Form or Other Supporting Document**

Point # 5808