

INSTRUCTIONS

1. Original and/or subsequent record used to evaluate the corner position.
2. Description of evidence found, note discrepancies in the record.
3. Description of monument and accessories set to perpetuate the corner position.
4. Sketch of corner, show all pertinent data.
5. Certification must be signed and sealed by Land Surveyor licensed in the State of Montana.
6. Fill in index information and show the corner's approximate location within the section diagram.

CERTIFIED CORNER RECORDATION

CORNER E. 1/4 S. 6 T. 16N R. 12E P.M.M. JUDITH BASIN COUNTY, MONTANA

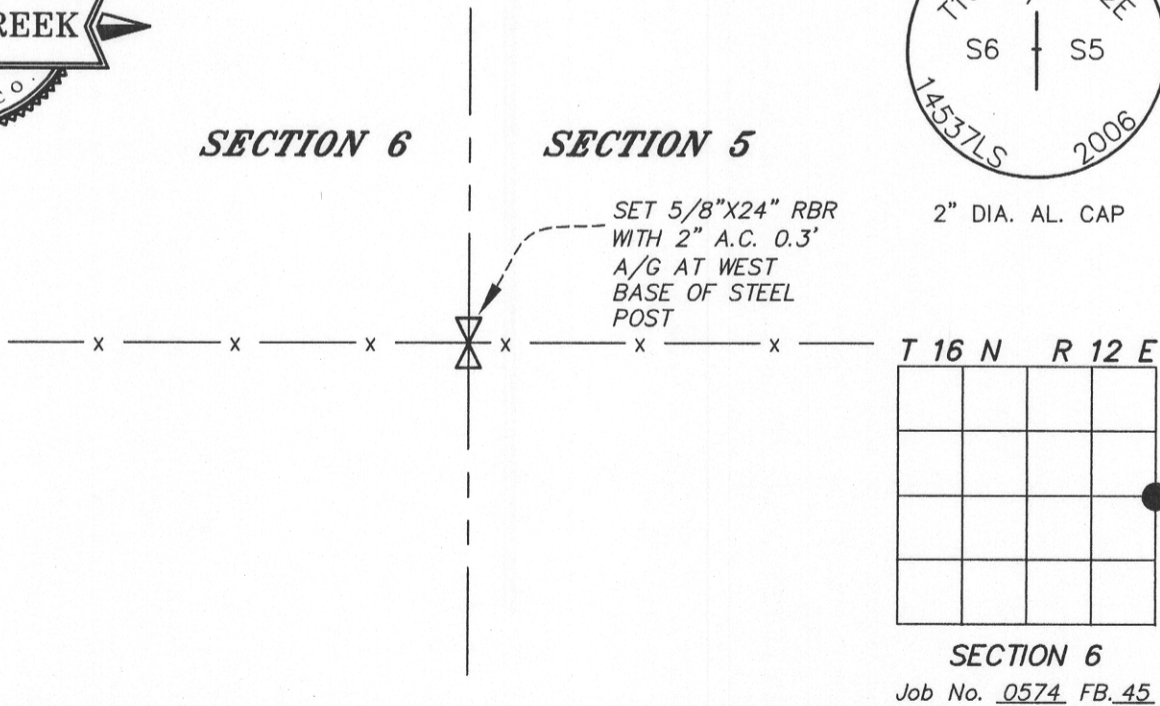
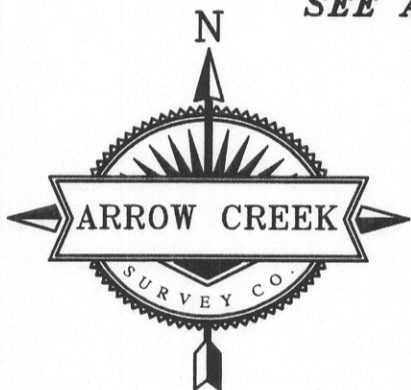
ORIGINAL RECORD: (ROBERTSON, 1882) SET SANDSTONE FOR 1/4 SECTION CORNER MARKED 1/4 ON WEST FACE. DUG PITS 18"X18"X12" NORTH AND SOUTH OF STONE 5.5 FEET DISTANCE AND RAISED A MOUND OF EARTH 1.5 FOOT HIGH, 3.5 FOOT BASE, ALONGSIDE

SUBSEQUENT RECORD: NONE

FOUND: NO EVIDENCE OF 1/4 CORNER FOUND

SET: SET 5/8"X24" REBAR WITH 2" ALUMINUM CAP 0.3' ABOVE GROUND ALONG WEST SIDE OF STEEL POST AS SHOWN BELOW.

SEE ASSOCIATED CERTIFICATE OF SURVEY



Certifications

I, Jeremy T. Milburn certify that the work represented herein was faithfully performed.

Jeremy T. Milburn
Signature of Ground Party Chief

Jeremy T. Milburn
Signature of Surveyor

Date: 11/8/07 Lic. No. 14537 LS

Employer: ARROW CREEK SURVEY CO.

Office of Clerk and Recorder, County of JUDITH BASIN

This "Corner Record" (Survey of Record) was filed for record on _____ was noted on the Cross

169194 Fee: \$0.00 #5304

JUDITH BASIN COUNTY Filed 01/09/2007 At 09:35 AM

Amanda H. Kelly, Clerk and Recorder

By R. J. Ad

County Official

Cross Index No. C-5 T. 16 N. R. 12 E P.M.M.