

153897

INSTRUCTIONS

1. Original and/or subsequent record used to evaluate the corner position.
2. Description of evidence found, note discrepancies in the record, state method of establishing lost or obliterated corners.
3. Description of monument and accessories set to perpetuate the corner position.
4. Sketch or corner, show all pertinent data which can best be shown in a sketch example, corner marking, topography ties, position of accessories, etc.
5. Certification must be signed and sealed by Registered Land Surveyor in State of Montana.
6. Fill in Cross Index & Section Diagram at bottom of sheet.

CERTIFIED CORNER RECORDATION

Corner #127 N 1/4 Corner Section 17 T. 16 N R. 12 E P.M.M. Judith Basin County

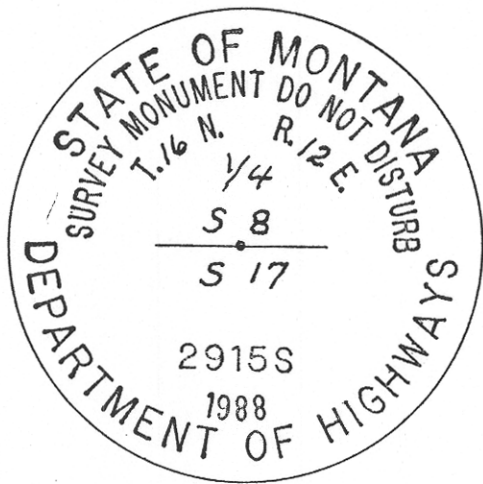
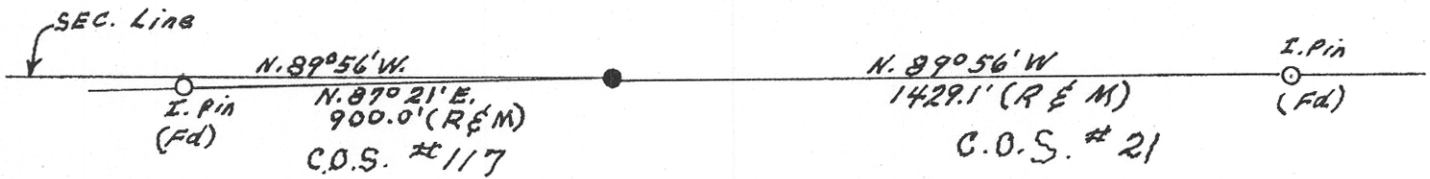
RECORD: 40 chains "Set sand stone 14 x 12 x 9 ins. 9 ins in the ground for 1/4 sec. cor. marked 1/4 on N. face dug pits 18 x 18 x 12 ins E & W. of stone. 5 1/2 ft. dist. and raised a mound of earth 1 1/2 ft. high 3 1/2 ft. base, alongside"

FOUND: No evidence of original corner or accessories

METHOD: This corner was reset from measurements shown on C.O.S. No's 21 and 117. (See sketch below)

SET: A 3 1/4 inch diameter aluminum cap riveted to a 30 inch flared aluminum tube 2 1/2 inches in diameter and marked as shown. (Cap is 7" out of the ground)

ACCESSORIES: The nw corner of Section 17 is S. 89° 20' 06" W., - 2,681.94 feet and an iron pin 57 feet right of highway P.T. Station 149+09.58 is S. 14° 28' 08" E., 1,878.84 feet.



CERTIFICATION

I, _____ certify the information shown herein is true and correct.

Signature Ground Party Chief

I, Gerald S. Ditto certify that this Corner Record correctly represents work performed by me or under by direction in compliance with the "Corner Recordation Act" (70-22-101, et seq., M.D.A.)

Gerald S. Ditto
Signature of Surveyor & Seal

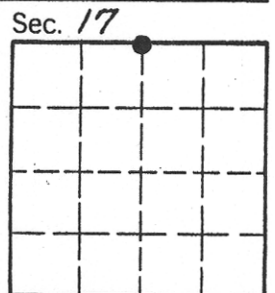
Date: 2-23-89 Reg. No. 2915 S

Employer: Self

SKETCH OF CORNER

Office of Clerk and Recorder, County of Judith Basin. This "corner record" was filed for record on the November 20 day of 19 89 was noted on the cross-index plat and is assigned page No. _____, in book No. File No. 450

Geraldine D. Jones County Official



Cross Index No. J-7 T. 16 N. R. 12 E. P.M.M.

• corner this sheet