

165973

INSTRUCTIONS

1. Original and/or subsequent record used to evaluate the corner position.
2. Description of evidence found, note discrepancies in the record, state method of establishing lost or obliterated corners.
3. Description of monument and accessories set to perpetuate the corner position.
4. Sketch of corner, show all pertinent data which can best be shown in a sketch example, corner marking, topography ties, position of accessories, etc.
5. Certification must be signed and sealed by Land Surveyor registered in the State of Montana.
6. Fill in Cross Index & Section Diagram at bottom of sheet.

CERTIFIED CORNER RECORDATION

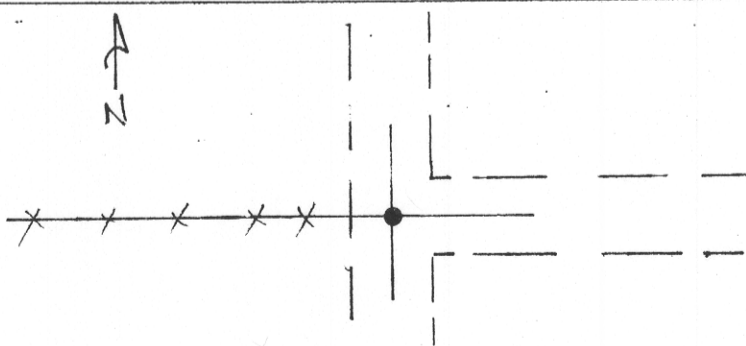
Corner 20 21 29 28 T 16 N R. 12 E P.M.M. Judith Basin County

Record: Unknown

Found: At approximate centerline of gravel roads north-south-east, find a 5/8" rebar buried 2 inches below the surface.

set: place a 2 inch aluminum cap - marked

G. Dubois
 T16N R12E
 S22 | S21
 S29 | S28
 2002
 10155LS



SKETCH OF CORNER

CERTIFICATION

I, Guy Dubois certify the information shown herein is true and correct.

Guy H. Dubois
Signature Ground Party Chief

I, Guy Dubois certify that this Corner Record correctly represents work performed by me or under my direction in compliance with the "Corner Recordation Act" (70-22-201, et seq., M.C.A.)

Guy H. Dubois
Signature of Surveyor & Seal

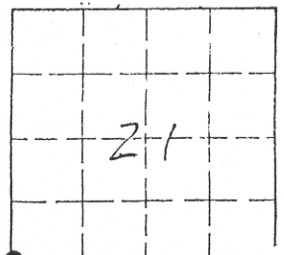
Date: 1-15-03 Reg. No. 10155LS

Employer: _____

Office of Clerk and Recorder
 record" was filed for record 165973 Fee: \$.00 #5716
 was noted on the cross-index: JUDITH BASIN COUNTY Filed 03/14/2003 At 09:45 AM
Amanda H. Kelly, Clk & Rcdr By R.C.A.

book No. _____ County Official _____

Cross Index No. R-9 T. 16 N R. 12 E P.M.M.



• - corner this sheet