

PLSS CORNER RECORD

Corner: WC S31 | S32 T. 16 N., R. 12 W., P.M.M., Powell County

Original GLO Record: Lee Williams, 1904 Resurveyed by the BLM in 1985 as follows:

True point for the cor. of secs. 31 and 32 only, at irregular boundary proportionate measurement; there is no remaining evidence of the original cor. Point falls on the W. edge of Monture Creek, course SW., unsuitable for monumentation: not monumented.

From the true point for the cor. of secs. 31 and 32, only, the point selected for the witness cor. of secs. 31 and 32, only, bears North, 0.23 chs. dist. Set an alum. post, 30 ins. long, 2 1/2 ins. diam., 22 ins. in the ground, with alum. cap mkd. Set a steel fence post, 5 1/2 ft. long, alongside the alum. post.

Description of Corner Evidence Found:

An alum. post, 2 1/2 ins. diameter, firmly set, projecting 8 ins. above ground marked as shown: There is no remaining evidence of the 1985 BT's

WC
T16N 12W
S31 | S32
S5
T15N
1985

Description Of Monument And Accessories Established:

The 1985 WC for Sec. 31 and Sec. 32 falls at the edge of an eroding NW bank of Monture Creek, about to fall in. I set a second WC on the SE. side of Monture Creek, an alum. post, 30 ins. long, 2 1/2 ins. diam., set 22 inches in the ground, with alum. Forest Service cap marked as shown, and in a collar of stone 2 ft. diam., from which

- A spruce, 19 in. diam., bears S. 70 3/4° E., 56.0 ft. dist., marked X BT
- A spruce, 22 in. diam., bears S. 38 1/2° E., 27.5 ft. dist., marked X BT

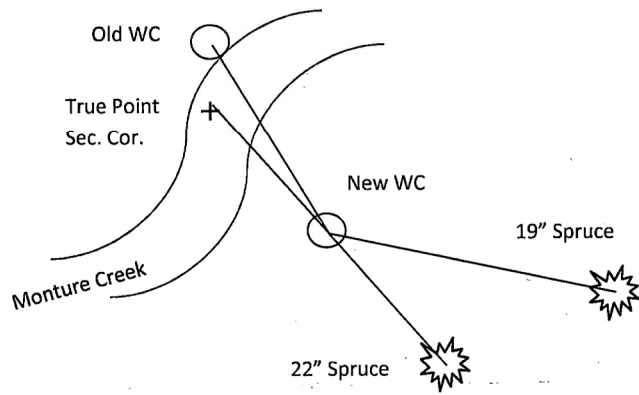
Deposit a magnet in a clear plastic case at the base of the alum. post and set a 5 ft. steel post alongside the monument.

WC
T16N R12W
S31 | S32
S5
T15N
LS9955
2013

From the new witness cor. point, the true point for the corner of secs. 31 and 32, determined at record bearing and distance from the 1985 witness cor. bears N. 20°24'54" W., 72.43 ft. dist., position falls in Monture Creek, not monumented.

From this same point, the 1985 witness corner bears N. 16°55'06" W., 86.82 ft. dist., monument previously described.

The BT's were signed and the blazes were painted red, I measure the distances to a nail in the side at center. Corner is located on level sandy ground on the SE. side of Monture Creek.



SKETCH OF CORNER

MONTANA
CERTIFICATION
MICHAEL W.
BEALE
No. 9955
LAND SURVEYOR

I, _____
certify the information shown herein is true and correct.

Signature of Clerk and Recorder

I, _____
certify that this Corner Record correctly represents work performed by me or under my direction in compliance with the "Corner Recordation Act" (70-22-101, et seq., MCA)

Michael W. Beale
Signature of Surveyor & Seal

Date: 5/22/2014 Lic. No. 9955
Employer: U.S. Forest Service

Office of Clerk and Record **171895 Fee: \$0.00 Bk Pg** _____
 record" was filed for recor **POWELL COUNTY Filed 10/20/2014 At 12:25 PM** _____
 was noted on the cross-inc **Diane S. Grey, Clk & Rcdr By *Diane S. Grey*** _____
Return To: FILING

Sec. 32

County Official _____

• — Corner this sheet

Cross Index No. Z-5 T. 16N R. 12W, PMM

Geodetic control for this survey references the North American Datum of 1983 (NAD 83) and was established utilizing static GPS observations post-processed by the National Geodetic Survey's (NGS) Online Positioning User Service (OPUS). The geographic position of the witness corner to the corner of sections 31 and 32, T. 16 N., R. 12 W., as determined by survey grade GPS-RTK methods and conventional traverse methods, is:

Latitude: 47° 05' 30.598" North
Longitude: 113° 09' 17.918" West

Photographs of Monument

