

INSTRUCTIONS

1. Original and/or subsequent record used to evaluate the corner position.
2. Description of evidence found, note discrepancies in the record, state method of establishing lost or obliterated corners.
3. Description of monument and accessories set to perpetuate the corner position.
4. Sketch of corner, show all pertinent data which can best be shown in a sketch example, corner marking, topography ties, position of accessories, etc.
5. Certification must be signed and sealed by Land Surveyor registered in the State of Montana.
6. Fill in Cross Index & Section Diagram at bottom of sheet.

CERTIFIED CORNER RECORDATION

Section Corner SECTIONS 13, 18, 19 & 24 T. 16N R. 13&14W P.M.M. Missoula & Powell County

ORIGINAL RECORD: (1890 G.L.O.) Set a slate stone 18x18x8 ins., 12 ins. in the ground, for cor. to sec. 13, 18, 19, and 24, marked with 3 notches on N. and S. edges, from which:
 A Larch 32" diam, bears N71°E, 30lks dist. marked, "T16N R13W S18 BT"
 A Pine 30" diam, bears S10°40'E, 70lks dist. marked, "T16N R13W S19 BT"
 A Larch 32" diam, bears S20°W, 15lks dist. marked, "T16N R14W S24 BT"
 A Pine 7" diam, bears N10°W, 3lks dist. marked, "T16N R14W S13 BT"

SUBSEQUENT RECORD: None

EVIDENCE FOUND: Found a stone 18x17x6, marked with 3 notches on north and south face, from which:
 A 30" Larch bears N74°E, a distance of 19.4 feet, scribe overgrown

PERPETUATION: In place of the stone, set a 2 1/2" diameter x 30" long aluminum pipe monument with 3 1/4" aluminum cap marked as shown below and bury the stone alongside, from which establish the following new accessories:

- A 7" Fir bears S27°E, a distance of 24.2 feet, scribed "T16N R13W S19 BT "
- A 9" Fir bears S68°W, a distance of 22.5 feet, scribed "T16N R14W S24 BT "
- A 10" Fir bears N34°W, a distance of 21.2 feet, scribed "T16N R14W S13 BT "

Set a Steel post with Forest Service Land Survey Monument decal north of monument, 2 feet distant.

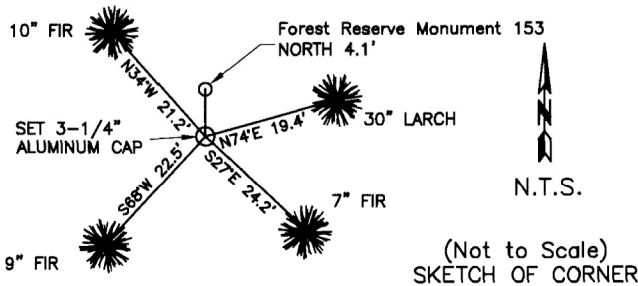
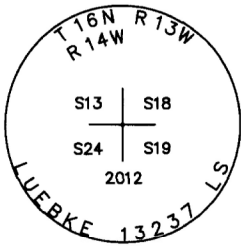
All BT's have BT & LSM signs, snowblazes and red painted rings.

Corner lies on a flat slope.

Date of Survey: June 2012

Compass declination 14°

NAD 83 coordinates for this corner:
 Latitude = 47°08'08.418"N Longitude = 113°18'10.305"W
 NOTE: These coordinates are to be used as a search tool only.



CERTIFICATION

I, Henry Moua
 certify the information shown herein is true and correct.

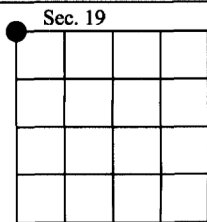
 Signature Ground Party Chief

I, Kurt Luebke
 certify that this Corner Record correctly represents work performed by me or under my direction in compliance with the "Corner Recordation Act" (70-22-101, et seq., M.C.A.)

 Signature of Surveyor & Seal

Date: January 22, 2013 Reg. No. 13237
 Employer: DJ&A P. C.

169152 Fee: \$0.00 Bk Pg
 POWELL COUNTY Filed 1/23/2013 At 9:05 AM
 Diane S. Grey, Clk & Rcdr By Jane B. Beckel
 Return To: FILING



Cross Index No. N-1 T. 16N R. 13W PMM
 Cross Index No. N-25 T. 16N R. 14W PMM