

INSTRUCTIONS

1. Original and/or subsequent record used to evaluate the corner position.
2. Description of evidence found, note discrepancies in the record, state method of establishing lost or obliterated corners.
3. Description of monument and accessories set to perpetuate the corner position.
4. Sketch of corner, show all pertinent data which can best be shown in a sketch example, corner marking, topography ties, position of accessories, etc.
5. Certification must be signed and sealed by Land Surveyor registered in the State of Montana.
6. Fill in Cross Index & Section Diagram at bottom of sheet.

CERTIFIED CORNER RECORDATION

1/4 Corner SECTION 7 & 12 T. 16N R. 13 & 14W P.M.M. Missoula & Powell County

ORIGINAL RECORD: (1890 GLO) Set a post 4 1/2 ft. long, 4 ins. square, 24 ins. in the ground, for 1/4 sec. cor., marked 1/4 S. on W. face; from which:

- A pine, 8" diam., bears S56°30'E, 26 links dist., marked 1/4 S. BT
- A larch, 26" diam., bears N63°W, 14 links dist., marked 1/4 S. BT

SUBSEQUENT RECORD: (1968 BLM) The 1/4 sec. cor. of secs. 7 and 12 as determined from the remains of the the original bearing trees. Set an iron post, 30 ins. long, 2 1/2 ins. diam., 26 ins. in the ground, with brass cap, from which:

- The remains of the original bearing trees:
- A pine, 12 ins. diam. bears S66°E, 26 links dist., mkd. 1/4 S BT
 - A dead larch, 36 ins. diam. bears N53°W, 14 links dist., mkd. 1/4 S BT
- A new bearing tree:
- A pine, 9 ins. diam. bears N58°W, 63 links dist., mkd. 1/4 S12 BT

EVIDENCE FOUND: Found 3 1/4" brass cap marked as shown below, from which:

- A dead pine bears S66°E, a distance of 17.2 feet, scribed "1/4 S7 BT"
- A larch stump bears N53°W, a distance of 9.2 feet, no visible scribe
- A dead pine bears N58°W, a distance of 41.5 feet, scribed "1/4 S12 BT"

PERPETUATION: The monument was left as found, from which establish the following new accessories:

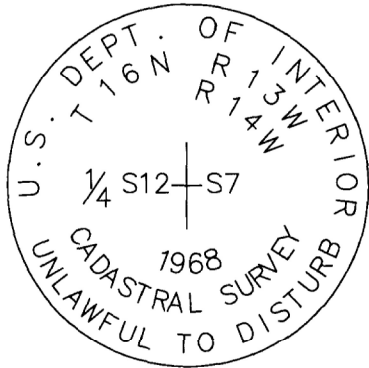
- A 9" douglas Fir bears N43°E, a distance of 12.7 feet, scribed "1/4 S7 BT"
- A 10" douglas Fir bears N66°W, a distance of 30.1 feet, scribed "1/4 S12 BT"

Set a Steel post with Forest Service Land Survey Monument and property boundary decal west and south of monument, 3 feet distant.

All BT's have BT & LSM signs, snowblazes and red painted rings.

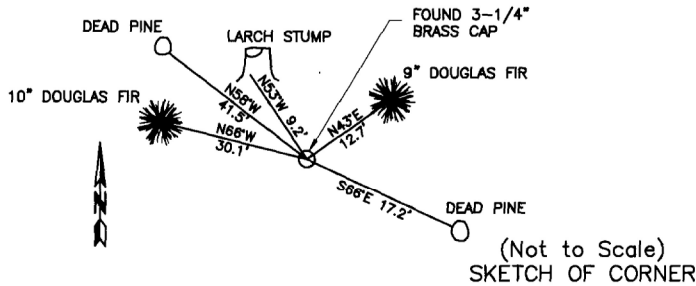
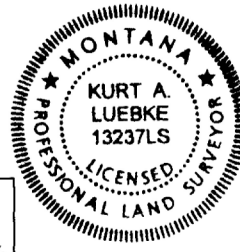
Corner lies on a 15% southwesterly facing slope.

Date of Survey: September 2013



Compass declination 14°

NAD 83 coordinates for this corner:
 Latitude = 47°09'27.434"N Longitude = 113°18'10.196"W
 NOTE: These coordinates are to be used as a search tool only.



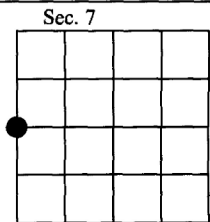
CERTIFICATION

I, Henry Moua
 certify the information shown herein is true and correct.
 Signature of Third Party Chief

I, Kurt Luebke
 certify that this Corner Record correctly represents work performed by me or under my direction in compliance with the "Corner Recordation Act" (70-22/101, et seq., M.C.A.)
 Signature of Surveyor & Seal

Date: November 30, 2013 Reg. No. 13237
 Employer: DJ&A P. C.

Office **170559 Fee: \$0.00 Bk Pg** "corner
 record **POWELL COUNTY Filed 12/10/2013 At 10:30 AM**
 was n **Diane S. Grey, Clk & Rcdr By Jane Beckley** in
 book i... County Official



• - corner this sheet

Cross Index No. G-25 T. 16N R. 14W PMM
 Cross Index No. G-1 T. 16N R. 13W PMM