

INSTRUCTIONS

1. Original and/or subsequent record used to evaluate the corner position.
2. Description of evidence found, note discrepancies in the record, state method of establishing lost or obliterated corners.
3. Description of monument and accessories set to perpetuate the corner position.
4. Sketch of corner, show all pertinent data which can best be shown in a sketch example, corner marking, topography ties, position of accessories, etc.
5. Certification must be signed and sealed by Land Surveyor registered in the State of Montana.
6. Fill in Cross Index & Section Diagram at bottom of sheet.

CERTIFIED CORNER RECORDATION

1/4 Corner SECTION 19 & 30 T. 16N R. 13W P.M.M. Powell County

ORIGINAL RECORD: (1898 G.L.O.)
 Set a sand stone, 18x12x5 ins., 12 ins. in the ground, for 1/4 sec. cor. marked 1/4 on N. face; from which:
 A red fir, 9 ins. diam., bears S61 1/2°W, 11 lks. dist. marked "1/4 S. B.T"
 A red fir, 7 ins. diam., bears N75°E, 13 lks. dist. marked "1/4 S. B.T"

SUBSEQUENT RECORD: None

EVIDENCE FOUND: Found a set 18"x12"x5" stone marked with "1/4" on the north side, no sign of BT's .

PERPETUATION: In place of the stone, set a 2 1/2" diameter x 30" long aluminum pipe monument with 3/4" aluminum cap marked as shown below and bury the stone alongside, from which establish the following new accessories:

- A 8" Douglas Fir bears N86°W, a distance of 23.0 feet, scribed "1/4 S19 BT "
- A 13" Ponderosa Pine bears N2°W, a distance of 26.6 feet, scribed "1/4 S19 BT "

Set a Steel post with Forest Service Land Survey Monument and Property Boundary decals east and west of monument, 3 feet distant.

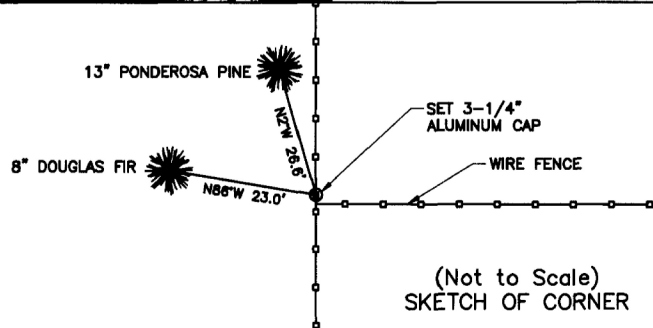
All BT's have BT & LSM signs, snowblazes and red painted rings.

Corner lies on a flat slope.

Date of Survey: June 2011

Compass declination 14°

NAD 83 coordinates for this corner:
 Latitude = 47°07'15.880"N Longitude = 113°17'34.059"W
 NOTE: These coordinates are to be used as a search tool only.



CERTIFICATION

I, Henry Moua
 certify the information shown herein is true and correct.
 Signature of Ground Party Chief

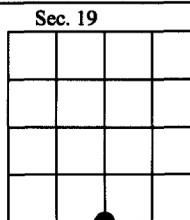
I, Kurt Luebke
 certify that this Corner Record correctly represents work performed by me or under my direction in compliance with the "Corner Recordation Act" (70-22-101, et seq., M.C.A.)
 Signature of Surveyor & Seal

Date: January 22, 2013 Reg. No. 13237
 Employer: DJ&A P. C.

N.T.S.

169163 Fee: \$0.00 Bk Pg

POWELL COUNTY Filed 1/23/2013 At 10:00 AM
 Diane S. Grey, Clk & Rcdr By [Signature]
 Return To: FILING



• - corner this sheet

Cross Index No. R-3 T. 16N R. 13W PMM