

INSTRUCTIONS

1. Original and/or subsequent record used to evaluate the corner position.
2. Description of evidence found, note discrepancies in the record, state method of establishing lost or obliterated corners.
3. Description of monument and accessories set to perpetuate the corner position.
4. Sketch of corner, show all pertinent data which can best be shown in a sketch example, corner marking, topography ties, position of accessories, etc.
5. Certification must be signed and sealed by Land Surveyor registered in the State of Montana.
6. Fill in Cross Index & Section Diagram at bottom of sheet.

CERTIFIED CORNER RECORDATION

South 1/16 Corner SECTIONS 19 & 20 T. 16N R. 13W P.M.M. Powell County

ORIGINAL RECORD: (1992 Steven M. Inabnit) Set a 2 1/2"x30" Al. Mon., buried 26" in the ground, collared with stone. 2 six ft. steel post with LAND SURVEY MONUMENT and PROPERTY BOUNDARY stickers are driven along side monument.

I established new bearing trees as follows:  
 A Fir, 12 ins. diam., bears N50°E, 34.7 ft. dist., marked "S1/16 S20 BT"  
 A Fir, 14 ins. diam., bears N53°W, 60.2 ft. dist., marked "S1/16 S19 BT"

NOTES: Corner lies in an open area, on slope. Approx. 5' from barb wire fence, Approx. 90' south of top of ridge.

SUBSEQUENT RECORD: None

EVIDENCE FOUND: Found 3/4" aluminum cap marked as shown below, from which:  
 A 13" Douglas Fir bears N55°E, a distance of 35.3 feet, scribed closed  
 A 16" Douglas Fir bears N52°W, a distance of 60.4 feet, scribed closed.

PERPETUATION: Leave the monument in place

Set a Steel post with Forest Service Land Survey Monument and Property Boundary decal south of monument, 3 feet distant.

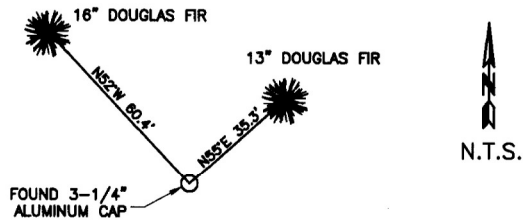
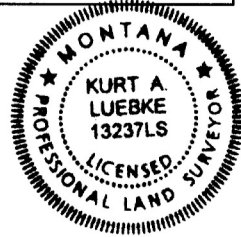
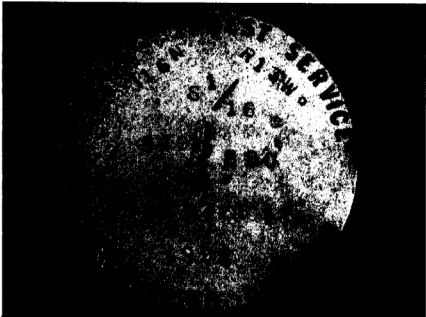
All BT's have BT & LSM signs, snowblazes and red painted rings.

Corner lies on a 40% southerly facing slope.

Date of Survey: June 2011

Compass declination 14°

NAD 83 coordinates for this corner:  
 Latitude = 47°07'28.953"N Longitude = W113°16'55.787"W  
 NOTE: These coordinates are to be used as a search tool only.



(Not to Scale)  
 SKETCH OF CORNER

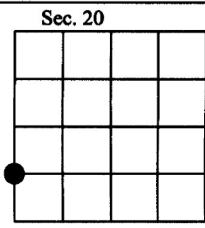
CERTIFICATION

I, Henry Mousa  
 certify the information shown herein is true and correct  
 Signature of Ground Party Chief

I, Kurt Luebke  
 certify that this Corner Record correctly represents work performed by me or under my direction in compliance with the "Corner Recordation Act" (70-22-101, et seq., M.C.A.)  
 Signature of Surveyor & Seal

Date: January 22, 2013 Reg. No. 13237  
 Employer: DJ&A P. C.

169164 Fee: \$0.00 Bk Pg  
 POWELL COUNTY Filed 1/23/2013 At 10:55 AM  
 Diane S. Grey, Clk & Rcdr By [Signature]  
 Return To: FILING



• - corner this sheet

Cross Index No. Q-5 T. 16N R. 13W PMM