

INSTRUCTIONS

1. Original and/or subsequent record used to evaluate the corner position.
2. Description of evidence found, note discrepancies in the record, state method of establishing lost or obliterated corners.
3. Description of monument and accessories set to perpetuate the corner position.
4. Sketch of corner, show all pertinent data which can best be shown in a sketch example, corner marking, topography ties, position of accessories, etc.
5. Certification must be signed and sealed by Land Surveyor registered in the State of Montana.
6. Fill in Cross Index & Section Diagram at bottom of sheet.

CERTIFIED CORNER RECORDATION

Section Corner SECTION 21, 22, 27 & 28 T. 16N R. 13W P.M.M. Powell County

ORIGINAL RECORD: (1898 G.L.O.) Set a sand stone, 20x14x8 ins., 15 ins. in the ground, for cor. of secs. 21,22,27 & 28, marked with 2 notches on the S. and 3 notches on E. edges, from which:

- A Larch, 30 ins. diam., bears N39°E, 39 lks. dist., marked "T16N R13W S22 B.T."
- A Pine, 6 ins. diam., bears S7½°E, 29 lks. dist., marked "T16N R13W S27 B.T."
- A Pine, 7 ins. diam., bears S43°W, 58 lks. dist., marked "T16N R13W S28 B.T."
- A Pine, 10 ins. diam., bears N77°W, 45 lks. dist., marked "T16N R13W S21 B.T."

SUBSEQUENT RECORD: (1991 Steve M. Inabnit Corner Recordation) Stone as described firmly set in place, replace stone with 2 1/2"x30" aluminum pipe buried 28" in the ground. Original stone is buried alongside of corner, from which:

- A 34" Larch bears N38°E, 22.9 ft. blaze closed
- A 12" L.P. Pine bears S12°E, 18.8 ft.
- A 14" L.P. Pine bears N51°W, 10.8 ft. blaze open no scribing (origin unknown)
- U.S. Forest Reserve Monument #149 with 4" brass cap bears East, 4.0 ft.

I establish new bearing tree as follows:

- A 10" Larch bears S28½°W, 124.7 ft. marked T16N R13W S28 BT

EVIDENCE FOUND: Found 3½" aluminum cap marked as shown below, from which:

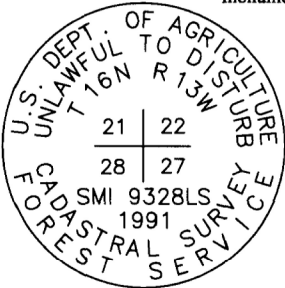
- A 33" Larch bears N38°E, a distance of 22.8 feet, scribed closed
- A 13" Larch bears S27°W, a distance of 124.1 feet, scribed scribed closed

PERPETUATION: Leave the monument in place from which we establish the following new accessories:

- A 17" Larch bears S16°E, a distance of 121.0 feet, scribed "T16N R13W S27 B.T."
- A 7" Larch bears N25°W, a distance of 31.2 feet, scribed "T16N R13W S21 B.T."

U.S. Forest Reserve Monument was not found.

Set a Steel post with Forest Service Land Survey Monument and Property Boundary decals north and south of monument, 3 feet distant.



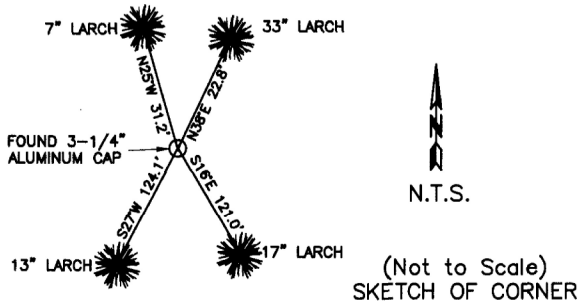
All BT's have BT & LSM signs, snowblazes and red painted rings.

Corner lies on a flat slope.

Date of Survey: June 2011

Compass declination 14°

NAD 83 coordinates for this corner:
Latitude = 47°07'16.150"N Longitude = 113°14'23.372"W
NOTE: These coordinates are to be used as a search tool only.



CERTIFICATION
I, Henry Moua
certify the information shown herein is true and correct.
Signature Ground Party Chief
I, Kurt Luebke
certify that this Corner Record correctly represents work performed by me or under my direction in compliance with the "Corner Recordation Act" (70-22-104, et seq., M.C.A.)
Signature of Surveyor & Seal
Date: January 22, 2013 Reg. No. 13237
Employer: DJ&A P. C.

169165 Fee: \$0.00 Bk Pg

POWELL COUNTY Filed 1/23/2013 At 10:10 AM
Diane S. Grey, CLK & Rcdr By Jerita R. Beckler
Return To: FILING

Sec. 27

●			

● - corner this sheet

Cross Index No. R-13 T. 16N R. 13W PMM