

INSTRUCTIONS

1. Original and/or subsequent record used to evaluate the corner position.
2. Description of evidence found, note discrepancies in the record, state method of establishing lost or obliterated corners.
3. Description of monument and accessories set to perpetuate the corner position.
4. Sketch of corner, show all pertinent data which can best be shown in a sketch example, corner marking, topography ties, position of accessories, etc.
5. Certification must be signed and sealed by Land Surveyor registered in the State of Montana.
6. Fill in Cross Index & Section Diagram at bottom of sheet.

CERTIFIED CORNER RECORDATION

1/4 Corner Sections 3 & 34 T. 15 & 16 N. R. 13 W. P.M.M. Powell County

ORIGINAL RECORD: (U.S Deputy Surveyor Geo W Travis, contract No 56, June 16, 1873)
A Fir, 14" diam for 1/4 sec cor marked 1/4 on the N side.

SUBSEQUENT RECORD: None

EVIDENCE FOUND: No Evidence of the original corner tree was found.

PERPETUATION: At a single proportionate position between the southeast and southwest section corners of section 34; I Set a 1"x40" rebar 36" in the ground with a 3 1/4" aluminum cap marked as shown below. Established two bearing trees:
A 16" Western Larch bears S25°W, 42.8 feet, Scribed "RM"
A 14" Western Larch bears east, 19.6 feet, Scribed "RM"

Affixed BT & ATTN. signs, snow blazed and painted red rings on BTs, rock ringed corner.

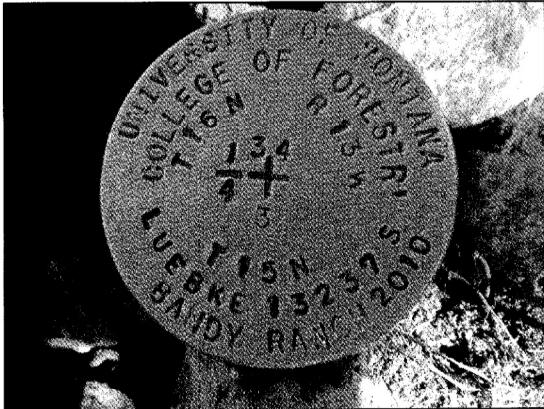
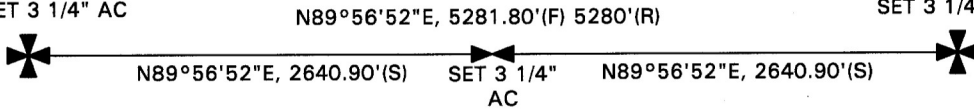
Corner falls on an east facing slope of 15-20%

Date of Survey: September 2010.

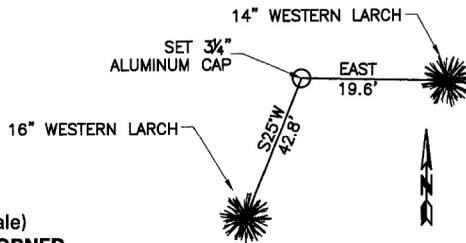
Magnetic Declination = 14.15°

FND ORIGINAL STONE
SET 3 1/4" AC

FND ORIGINAL STONE
SET 3 1/4" AC



NAD 83 coordinates for this corner:
Latitude = 47°05'31.9"N Longitude = 113°13'45.5"W
NOTE: These coordinates are to be used as a search tool only.



(Not to Scale)
SKETCH OF CORNER

CERTIFICATION

I, Gary Little
certify the information shown herein is true and correct.
Gary Little
Signature Ground Party Chief

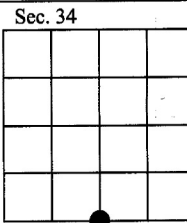
I, Kurt A. Luebke
certify that this Corner Record correctly represents work performed by me or under my direction in compliance with the "Corner Recordation Act" (70-22-10), et seq., M.C.A.
Kurt A. Luebke
Signature of Surveyor & Seal

Date: 11-28-2010 Reg. No. 13237 S

Employer: DJ&A P. C.

165933 Fee: \$0.00 Bk Pg

POWELL COUNTY Filed 12/3/2010 At 11:10 AM
Diane S. Grey, Clk & Rcdr By *Jarita Beckels*
Return To: FILING



• - corner this sheet

Cross Index No. Z-15 T. 16 N. R. 13 W. PMM
Cross Index No. A-15 T. 15 N. R. 13 W. PMM