

INSTRUCTIONS

1. Original and/or subsequent record used to evaluate the corner position.
2. Description of evidence found, note discrepancies in the record, state method of establishing lost or obliterated corners.
3. Description of monument and accessories set to perpetuate the corner position.
4. Sketch of corner, show all pertinent data which can best be shown in a sketch example, corner marking, topography ties, position of accessories, etc.
5. Certification must be signed and sealed by Land Surveyor registered in the State of Montana.
6. Fill in Cross Index & Section Diagram at bottom of sheet.

CERTIFIED CORNER RECORDATION

Corner Sections 2, 3, 34 & 35 T. 15 & 16 N. R. 13 W. P.M.M. Powell County

ORIGINAL RECORD: (U.S. Deputy Surveyor Geo W Travis, contract No. 56, June 16, 1873)  
 Set a sandstone 18"x 6"x 5", 12" in the ground marked with 2 notches on the E. and 6 on the S edges, from which:  
 A Fir, 20" diam, bears N72°E, 79 links (52.1') marked "R13W. T16N. S.35 B.T."  
 A Larch, 16" diam, bears N50°W, 76 links (50.2') marked "S. 34 B.T."  
 A Fir, 14" diam, bears S73°W, 100 links (66') marked "T15W. S. 3 B.T."  
 A Fir, 14" diam, bears S13°E, 152 links (100.3') marked "S. 2 B.T."

SUBSEQUENT RECORD: None

EVIDENCE FOUND: Found original sandstone, 9"x 5"x 6", above the ground, marked with 2 notches on E and 6 notches on S edges, from which;  
 A 34" Fir snag with scribing bears N68°E, 53.3 feet.  
 A 30" stump bears N50°W, 53.6 feet.  
 A 30" stump bears S13°E 101.0 feet.  
 Depression in ground bears S73°W, 66 feet.

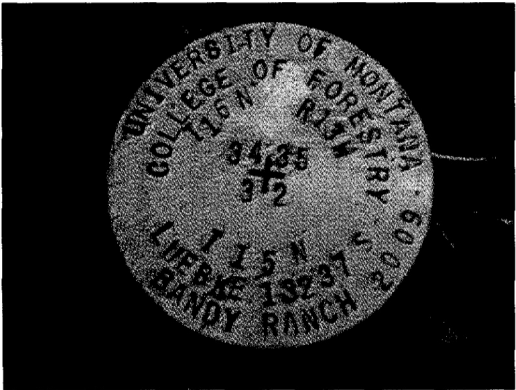
PERPETUATION: In the position of the found stone, set a 1" x 40" rebar, 36" in the ground with a 3 1/4" aluminum cap marked as shown below and buried the original stone along side. Established new bearing trees:  
 A 14" Douglas Fir bears S25°W, 32.7 feet, Scribed "RM"  
 A 12" Douglas Fir bears N79°W, 31.9 feet, Scribed "RM"  
 A 14" Douglas Fir bears S54°E, 59.9 feet, Scribed "RM"

Affixed BT & ATTN. signs, snow blazed and painted red rings on BTs, rock ringed corner.

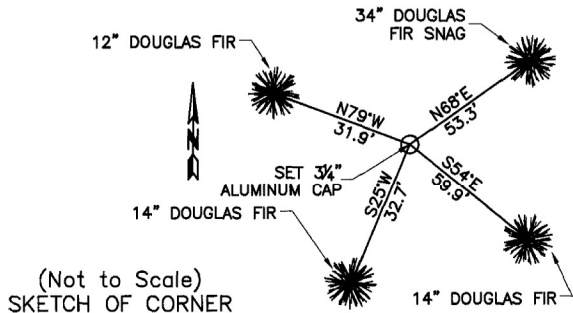
Corner falls on a flat ridge on rolling ground coursing NE and SW. Old road about 400' SE.

Date of Survey: October, 2009.

Magnetic Declination = 14.15°

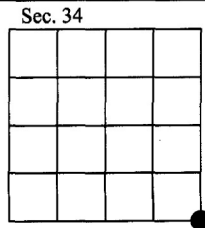


NAD 83 coordinates for this corner:  
 Latitude = 47°05'32.2"N Longitude = 113°13'07.1"W  
 NOTE: These coordinates are to be used as a search tool only.



CERTIFICATION  
 I, Gary Little  
 certify the information shown herein is true and correct.  
*Gary Little*  
 Signature Ground Party Chief  
 I, Kurt A. Luebke  
 certify that this Corner Record correctly represents work performed by me or under my direction in compliance with the "Corner Recordation Act" (70-22-101, et seq., M.C.A.)  
*Kurt Luebke*  
 Signature of Surveyor & Seal  
 Date: 1-5-2010 Reg. No. 13237 S  
 Employer: DJ&A P. C.

164556 Fee: \$0.00 Bk Pg  
 POWELL COUNTY Recorded 1/5/2010 At 10:15 AM  
 Diane S. Grey, Clk & Rcdr By *Jane Knebel*  
 Return To: FILING



Cross Index No. Z-17 T. 16 N. R. 13 W. PMM  
 Cross Index No. A-17 T. 15 N. R. 13 W. PMM