

INSTRUCTIONS

1. Original and/or subsequent record used to evaluate the corner position.
2. Description of evidence found, note discrepancies in the record, state method of establishing lost or obliterated corners.
3. Description of monument and accessories set to perpetuate the corner position.
4. Sketch of corner, show all pertinent data which can best be shown in a sketch example, corner marking, topography ties, position of accessories, etc.
5. Certification must be signed and sealed by Land Surveyor registered in the State of Montana.
6. Fill in Cross Index & Section Diagram at bottom of sheet.

CERTIFIED CORNER RECORDATION

1/4 Corner Sections 34 & 35 T. 16 N. R. 13 W. P.M.M. Powell County

ORIGINAL RECORD: (U.S. Surveyor W. H. Thorn, July 23, 1898)
 Set a sandstone 15"x 12"x 8", 10" in the ground, for 1/4 section corner, marked 1/4 on W face from which;
 A fir, 10" diam, bears N58°W., 27 links (17.8') marked "1/4 S., B.T."
 A spruce, 10" diam, bears S88°E., 16 links (10.5') marked "1/4 S., B.T"

SUBSEQUENT RECORD: None

EVIDENCE FOUND: Found original stone firmly set, 12"x 8"x 5", above ground, marked "1/4" on W face.
 Stump hole for W. B.T. and nothing for E. B.T.

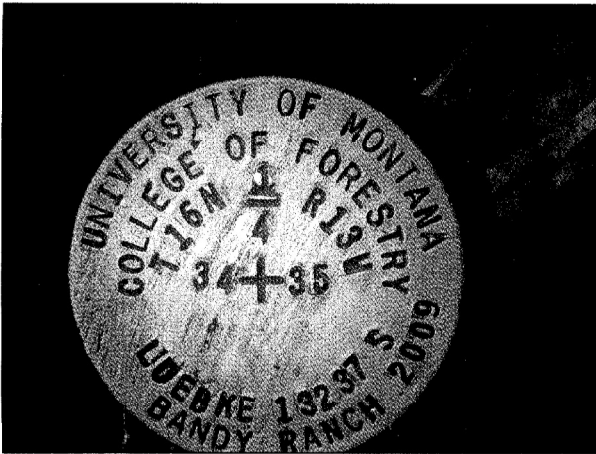
PERPETUATION: In the position of the found stone, set a 1"x 40" rebar, 36" in the ground with a 3 1/4" aluminum cap marked as shown below and buried the original stone along side. Established new bearing trees:
 An 8" LodgePole pine bears S88°E, 22.4feet, Scribed "RM"
 An 8" Douglas fir bears N78°W, 26.4 feet, Scribed "RM"

Affixed BT & ATTN. signs, snow blazed and painted red rings on BTs, rock ringed corner.

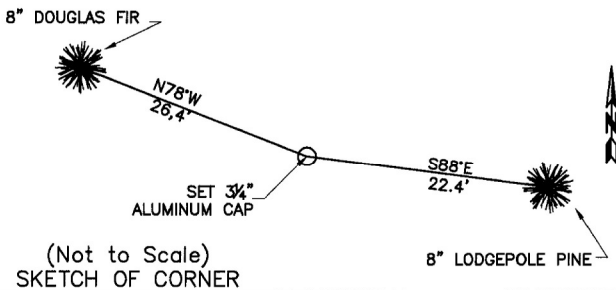
Corner falls on a N/W, 10% slope, about 175 feet S/W of old logging road.

Date of Survey: October, 2009.

Magnetic Declination = 14.15°

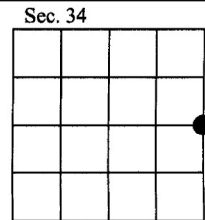


NAD 83 coordinates for this corner:
 Latitude = 47°05'58.2"N Longitude = 113°13'07.2"W
 NOTE: These coordinates are to be used as a search tool only.



CERTIFICATION
 I, Gary Little
 certify the information shown herein is true and correct.
Gary Little
 Signature Ground Party Chief
 I, Kurt A. Luebke
 certify that this Corner Record correctly represents work performed by me or under my direction in compliance with the "Corner Recordation Act" (70-22-101, et seq., M.C.A.)
Kurt Luebke
 Signature of Surveyor & Seal
 Date: 1-5-2010 Reg. No. 13237 S
 Employer: DJ&A P. C.

164557 Fee: \$0.00 Bk Pg
 POWELL COUNTY Recorded 1/5/2010 At 10:20 AM
 Diane S. Grey, Clk & Rcdr By *Diane S. Grey*
 Return To: FILING



• - corner this sheet

Cross Index No. X-17 T. 16 N. R. 13 W. PMM