

INSTRUCTIONS

1. Original and/or subsequent record used to evaluate the corner position.
2. Description of evidence found, note discrepancies in the record, state method of establishing lost or obliterated corners.
3. Description of monument and accessories set to perpetuate the corner position.
4. Sketch of corner, show all pertinent data which can best be shown in a sketch example, corner marking, topography ties, position of accessories, etc.
5. Certification must be signed and sealed by Land Surveyor registered in the State of Montana.
6. Fill in Cross Index & Section Diagram at bottom of sheet.

CERTIFIED CORNER RECORDATION

1/4 Corner SECTIONS 25 & 36 T. 16N R. 13W P.M.M. Powell County

ORIGINAL RECORD: (1898 GLO) Set a sandstone 15x9x7 ins, 10 ins. in the ground, for 1/4 sec. cor., marked 1/4 on N. face; from which:
 A fir, 24" diam., bears S53°E, 25 links dist., marked 1/4 S. BT
 A fir, 20" diam., bears N55°E, 23 links dist., marked 1/4 S. BT

SUBSEQUENT RECORD: (None found in Powell County Court House)

(2006 Ken E. Jenkins 9330 LS from State DNR) Found a 13"x9"x7" sandstone firmly set protruding 6" out of the ground and clearly marked 1/4 on north side. We found no sign of the original reference monuments. We did find an east-west fence, 8.0 ft to the north of the monument.

- A 24" stump with low heel blaze markings, bears N57°W, 18.5 ft
- A 30" Douglas fir with low heel blaze, bears N15°E, 29.3 ft
- Note: 30" fir had a 1966 Anaconda BT tag.

At the position of the found original one-quarter corner stone we set a 5/8" x 30" rebar with a 3-1/4" aluminum cap, 0.5 ft above ground. We constructed a ring of stones around the monument and established new reference monuments as follows:

- A 12" Douglas fir bears N86°E, 39.9 ft, blazed and scribed RM1.
- A 15" Douglas fir bears S60°W, 3.4 ft, blazed and scribed RM2.

We buried the original stone 1.0 ft north of the monument.

EVIDENCE FOUND: Found 3 1/4" aluminum cap marked as shown below, from which:
 A 16" Douglas fir bears N86°E, a distance of 39.9 feet, scribed "RM"
 A 15" Douglas fir bears S60°W, a distance of 3.4 feet, scribed "RM"

PERPETUATION: The monument was left as found.

Set a Steel post with Forest Service Land Survey Monument and property boundary decal south of monument, 0.5 feet distant.

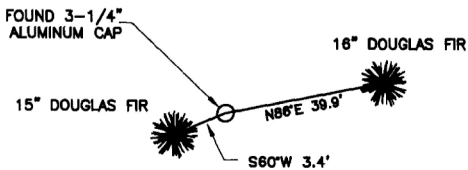
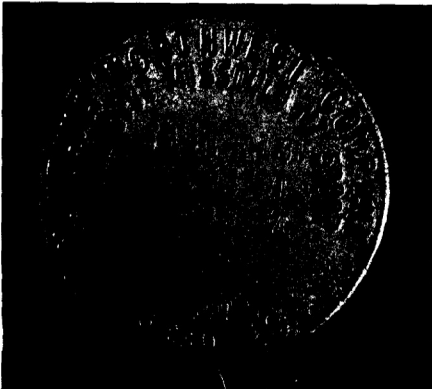
All BT's have BT & LSM signs, snowblazes and red painted rings.

Corner lies on a 10% northwesterly facing slope.

Date of Survey: September 2013

Compass declination 14°

NAD 83 coordinates for this corner:
 Latitude = 47°06'24.479"N Longitude = 113°11'12.893"W
 NOTE: These coordinates are to be used as a search tool only.



(Not to Scale)
 SKETCH OF CORNER

CERTIFICATION
 I, Henry Moua
 certify the information shown herein is true and correct.
 Signature of Party Chief

I, Kurt Luebke
 certify that this Corner Record correctly represents work performed by me or under my direction in compliance with the "Corner Recordation Act" (70-22-10), et seq., M.C.A.
 Signature of Surveyor & Seal

Date: November 30, 2013 Reg. No. 13237

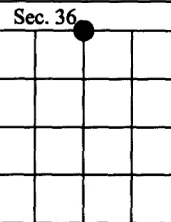
Employer: DJ&A P. C.

Office of Clerk and Recorder, County of _____
 170565 Fee: \$0.00 Bk Pg _____

record w/ POWELL COUNTY Filed 12/30/2013 At 11:00 AM
 was noted Diane S. Grey, Clk & Rcdr By [Signature]
 Return To: FILING

book No. _____

 County Official



• - corner this sheet

Cross Index No. V-23 T. 16N R. 13W PMM