

INSTRUCTIONS

1. Original and/or subsequent record used to evaluate the corner position.
2. Description of evidence found, note discrepancies in the record, state method of establishing lost or obliterated corners.
3. Description of monument and accessories set to perpetuate the corner position.
4. Sketch of corner, show all pertinent data which can best be shown in a sketch example, corner marking, topography ties, position of accessories, etc.
5. Certification must be signed and sealed by Land Surveyor registered in the State of Montana.
6. Fill in Cross Index & Section Diagram at bottom of sheet.

CERTIFIED CORNER RECORDATION

Standard 1/4 Corner SECTION 35 T. 17N R. 14W P.M.M. Missoula & Powell County

ORIGINAL RECORD: (1917 G.L.O.) Set a granite stone, 20x12x6 ins., 15 ins. in the ground, for standard 1/4 sec. cor., marked SC 1/4 on N. face, from which:

- A balsam, 8 ins. diam., bears N56°E, 24 lks. dist., marked SC 1/4 S35 BT
- A red fir, 12 ins. diam., bears N8°W, 31 lks. dist., marked SC 1/4 S35 BT

SUBSEQUENT RECORD: None

EVIDENCE FOUND: Found fractured stone 7x6x2 marked with 1/4 on north face, from which:

- A 12" dead fallen Fir with old blaze bears N55°E, a distance of 15.8 feet

PERPETUATION: In place of the stone, set a 2 1/2" diameter x 30" long aluminum pipe monument with 3/4" aluminum cap marked as shown below and bury the stone alongside, from which establish the following new accessories:

- A 16" Douglas Fir bears N10°W, a distance of 23.1 feet, scribed "SC 1/4 S35 BT "
- A 13" Alpine Fir bears S66°W, a distance of 32 feet, scribed "SC 1/4 S3 BT "

Set a Steel post with Forest Service Land Survey Monument decal west of monument, 1.0 feet distant.

All BT's have BT & LSM signs, snowblazes and red painted rings.

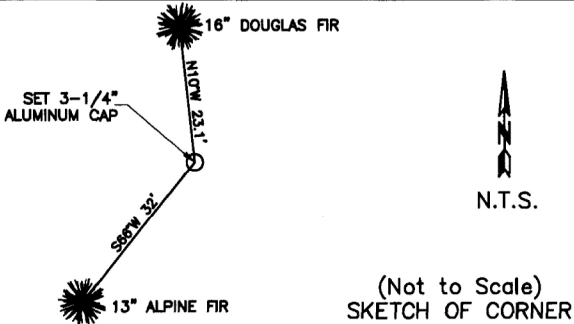
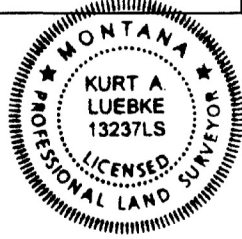
± 250' from end of logging spur

Corner lies on a 35% easterly facing slope.

Date of Survey: June 2011

Compass declination 14°

NAD 83 coordinates for this corner:
 Latitude = 47°10'45.590"N Longitude = 113°20'44.711"W
 NOTE: These coordinates are to be used as a search tool only.



CERTIFICATION

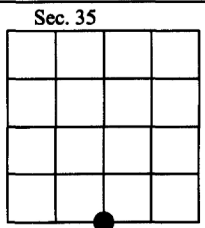
I, Henry Moua
 certify the information shown herein is true and correct.
 Signature Ground Party Chief

I, Kurt Luebke
 certify that this Corner Record correctly represents work performed by me or under my direction in compliance with the "Corner Recordation Act" (70-22-101, et seq., M.C.A.)
 Signature of Surveyor & Seal

Date: January 22, 2013 Reg. No. 13237

Employer: DJ&A P. C.

169155 Fee: \$0.00 Bk Pg
 POWELL COUNTY Filed 1/23/2013 At 9:20 AM
 Diane S. Grey, Clk & Rcdr By [Signature]
 Return To: FILING



• - corner this sheet

Cross Index No. Z-19 T. 17N R. 14W PMM