

INSTRUCTIONS

1. Original and/or subsequent record used to evaluate the corner position.
2. Description of evidence found, note discrepancies in the record, state method of establishing lost or obliterated corners.
3. Description of monument and accessories set to perpetuate the corner position.
4. Sketch of corner, show all pertinent data which can best be shown in a sketch example, corner marking, topography ties, position of accessories, etc.
5. Certification must be signed and sealed by Land Surveyor registered in the State of Montana.
6. Fill in Cross Index & Section Diagram at bottom of sheet.

CERTIFIED CORNER RECORDATION

AP Standard Corner SECTIONS 35 & 36 T. 17N R. 14W P.M.M. Missoula & Powell County

**ORIGINAL RECORD:** (1890 G.L.O.) Set a slate stone 21x6x4 ins., 16 ins. in the ground, for standard cor. to sec. 35 and 36; marked S.C., with 1 notch on E. and 5 notches on W. faces, from which:  
 which:  
 A Balsam, 7 ins. diam., bears N46°15'E, 11 lks. dist., marked T 17 N, R 14 W, S 36 BT  
 A Balsam, 8 ins. diam., bears N44°15"W, 18 lks. dist., marked T 17 N, R 14 W, S 35 BT  
 A Fir, 12 ins. diam., bears S30°W, 34 lks. dist., marked, T 16 N, R 14 W, S 2 BT

**SUBSEQUENT RECORD:** (1917 G.L.O.) The old stand. cor. of secs. 35 and 36, which is a slate stone, 6x6x6 ins. above ground, marked and witnessed as described by the Surveyor General. I efface the marks on the stone and bearing trees and mark AP on N. face of stone, and AP BT on bearing trees.

**EVIDENCE FOUND:** Found a stone 8"x6"x18" marked SC with 1 notch on the east face and 5 notches on west face. From which:  
 A 14" Fir bears N42°E, a distance of 7.6 feet, visible scribing  
 Tree stump bears S10°W, a distance of 22.2 feet, scribe not legible  
 Tree stump bears N42°W, a distance of 12.5 feet, scribe not legible

**PERPETUATION:** In place of the stone, set a 2 1/2" diameter x 30" long aluminum pipe monument with 3/4" aluminum cap marked as shown below and bury the stone alongside, from which establish the following new accessories:

A 11" Alpine Fir bears N50°W, a distance of 19.8 feet, scribed "AP S35 BT "

Set a Steel post with Forest Service Land Survey Monument decal north of monument, 2.0 feet distant.

All BT's have BT & LSM signs, snowblazes and red painted rings.

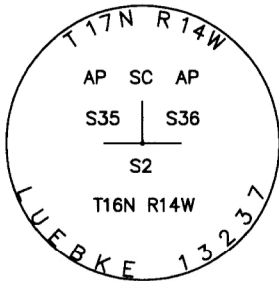
Forest Reserve brass cap No. 158 bears East, a distance of 4.0'

Corner lies on a 10% westerly facing slope.

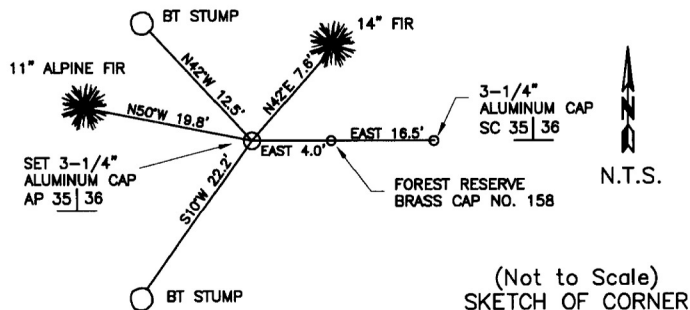
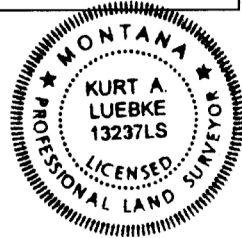
Date of Survey: June 2011

Compass declination 14°

NAD 83 coordinates for this corner:  
 Latitude = 47°10'45.598"N Longitude = 113°20'06.823"W  
 NOTE: These coordinates are to be used as a search tool only.



Note: This corner is stamped as originally positioned. It now is located online between sections 35 and 2, and is no longer adjacent to Section 36.



CERTIFICATION  
 I, Henry Moua  
 certify the information shown herein is true and correct.  
 Signature Ground Party Chief  
 I, Kurt Luebke  
 certify that this Corner Record correctly represents work performed by me or under my direction in compliance with the "Corner Recordation Act" (70-22-101, et seq., M.C.A.)  
 Signature of Surveyor & Seal  
 Date: January 22, 2013 Reg. No. 13237  
 Employer: DJ&A P. C.

Sec. 35


• - corner this sheet

169157 Fee: \$0.00 Bk Pg

POWELL COUNTY Filed 1/23/2013 At 9:30 AM  
 Diane S. Grey, Clk & Rcdr By [Signature]  
 Return To: FILING

Cross Index No. Z-21 T. 17N R. 14W PMM