

Missoula County Control Point Datasheet

Monument Description: 3-1/4" Aluminum Cap 2923S

Project Name: Seeley Lake

Station Description: Section Corner

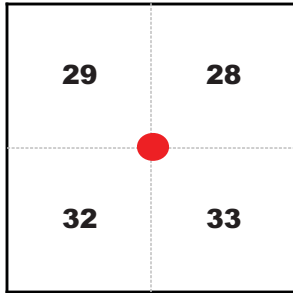
Date Visited: Aug. 17, 2010

Monument Stability: C+ GPS Visibility: D

Observer: SEN - CLG

Quad. Name: Belmont Point

T. 16 N. R. 15 W.



NAD 83 (2007) Lat/Long Position

47°06'21.975"N

113°30'54.537"W

NAVD 88 Elevation: 4199.4 sft.

Notes:

Photo of Monument



Photo Looking North

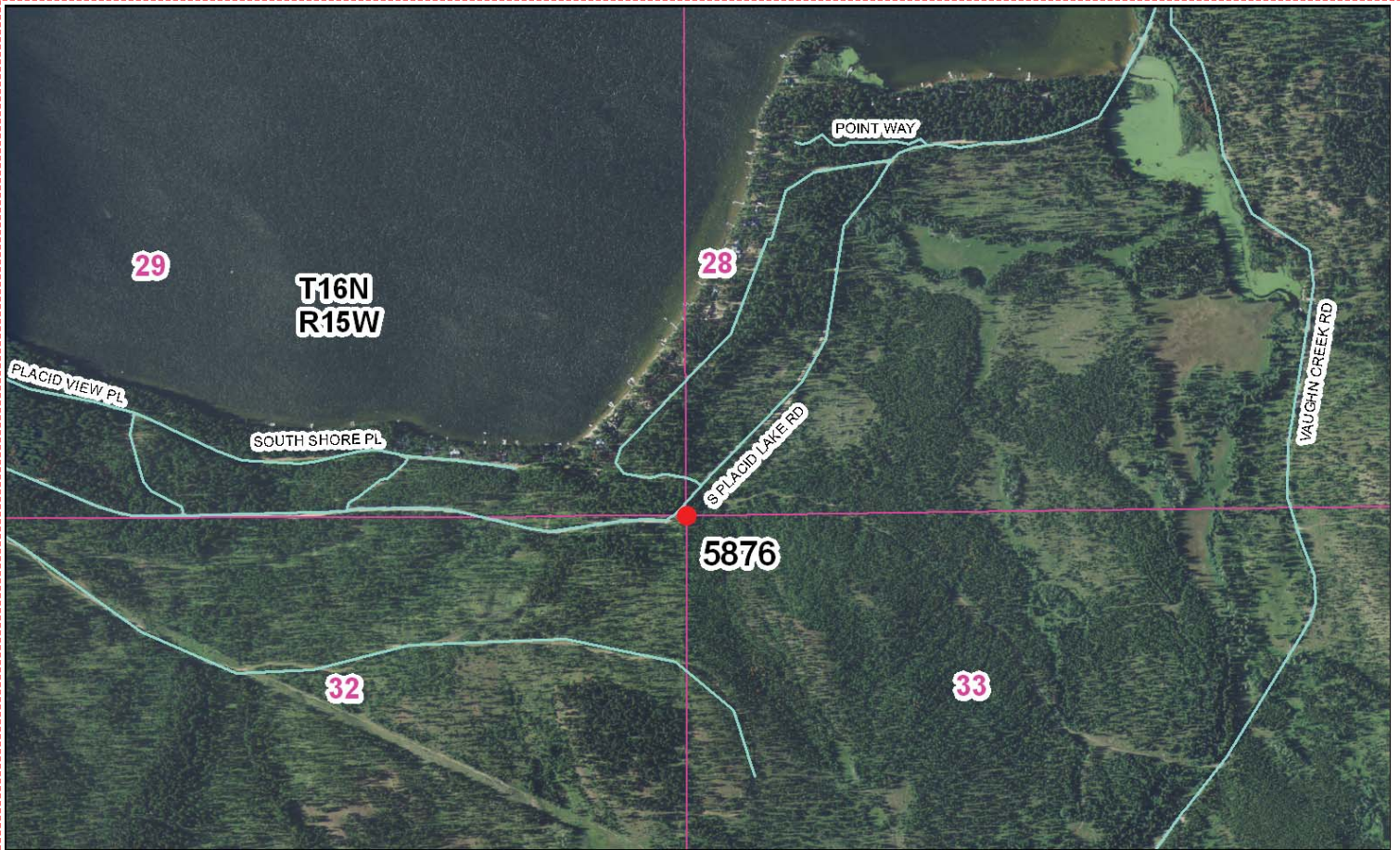


Photo Looking West



Point # 5876

To Reach: 2wd access.



Map of Area

INSTRUCTIONS

1. Prepare and file subsequent record only - see last corner position.
2. Description of evidence found, used this, unless the record, state method of establishing line or obliterated corner.
3. State of evidence found, used this, unless the record, state method of establishing line or obliterated corner.
4. Search for corner, show all permanent data which can be shown in a sketch, describe, center marking, appropriate use, position of monuments, etc.
5. Certification must be signed and dated by Registered Land Surveyor or State of Missouri.
6. Fill in Corner Mark & Section Diagram at bottom of sheet.

CERTIFIED CORNER RECORDATION

Corner 29 28 32 33 T. 16 N. R. 15 W. P.M.M. Missoula County

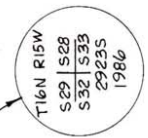
1890 (GLO) Set a sandstone 15" x 12" x 10", 10 ins. in the ground marked with 1 notch on South and 4 notches on East edge from which:

- 7 in. larch, bears N. 36° E., 5.3 ft.
- 12 in. fir, bears S. 23° 15' E., 17.2 ft.
- 18 in. larch, bears S. 54° W., 29.7 ft.
- 7 in. larch, bears N. 66° 30' W., 18.5 ft.

1986 (PCI) Found original stone firmly set from which:

- 24 in. fir, bears S. 23° 15' E., 17.2 ft., with scribing visible.
- 25 in. larch, bears S. 54° W., 29.7 ft., with scribing visible.

At the position of the stone I set a 3 1/4 in. x 30 in. aluminum monument 24 ins. deep. No new RM's set.



CERTIFICATION

I, Michael P. Leleune, certify the information shown herein to be true and correct.

Signature of MISSOURI

I, Richard A. M... North, RICHARD A. M..., Professional Land Surveyor, No. 2923S, State of Missouri, certify that I am a duly Licensed Professional Land Surveyor in the State of Missouri, and that I am duly qualified to perform the duties of a Professional Land Surveyor in the State of Missouri.

Date: 6/2/86 Reg. No. 2923S

Employer: Professional Consultants, Inc.

SKETCH OF CORNER

Office of Clerk and Recorder, County of Missoula, Sec. 28

This "corner record" was filed for record on the 27 day of June, 19 86, was noted on the cross-index plat and is assigned page No. 1571, in book No. 242 Missoula by Professional County Clerk.

Doc. C.R. no fee

8611977

Corner Index No. V-9 T. 16 N. R. 15 W. P.M.M. Missoula

242-1571

• corner this sheet

Corner Recordation Form or Other Supporting Document

Point # 5876