

# Missoula County Control Point Datasheet

Monument Description: 3-1/4" Aluminum Cap 2532S

Project Name: Seeley Lake

Station Description: 1/4 Corner

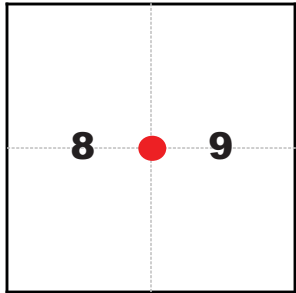
Date Visited: Aug. 11, 2010

Monument Stability: C      GPS Visibility: B

Observer: CLG

Quad. Name: Seeley Lake West

T. 16 N. R. 15 W.



### NAD 83 (2007) Lat/Long Position

47°09'26.373"N

113°30'55.942"W

NAVD 88 Elevation: 4293.1 sft.

### Notes:

### Photo of Monument



### Photo Looking North

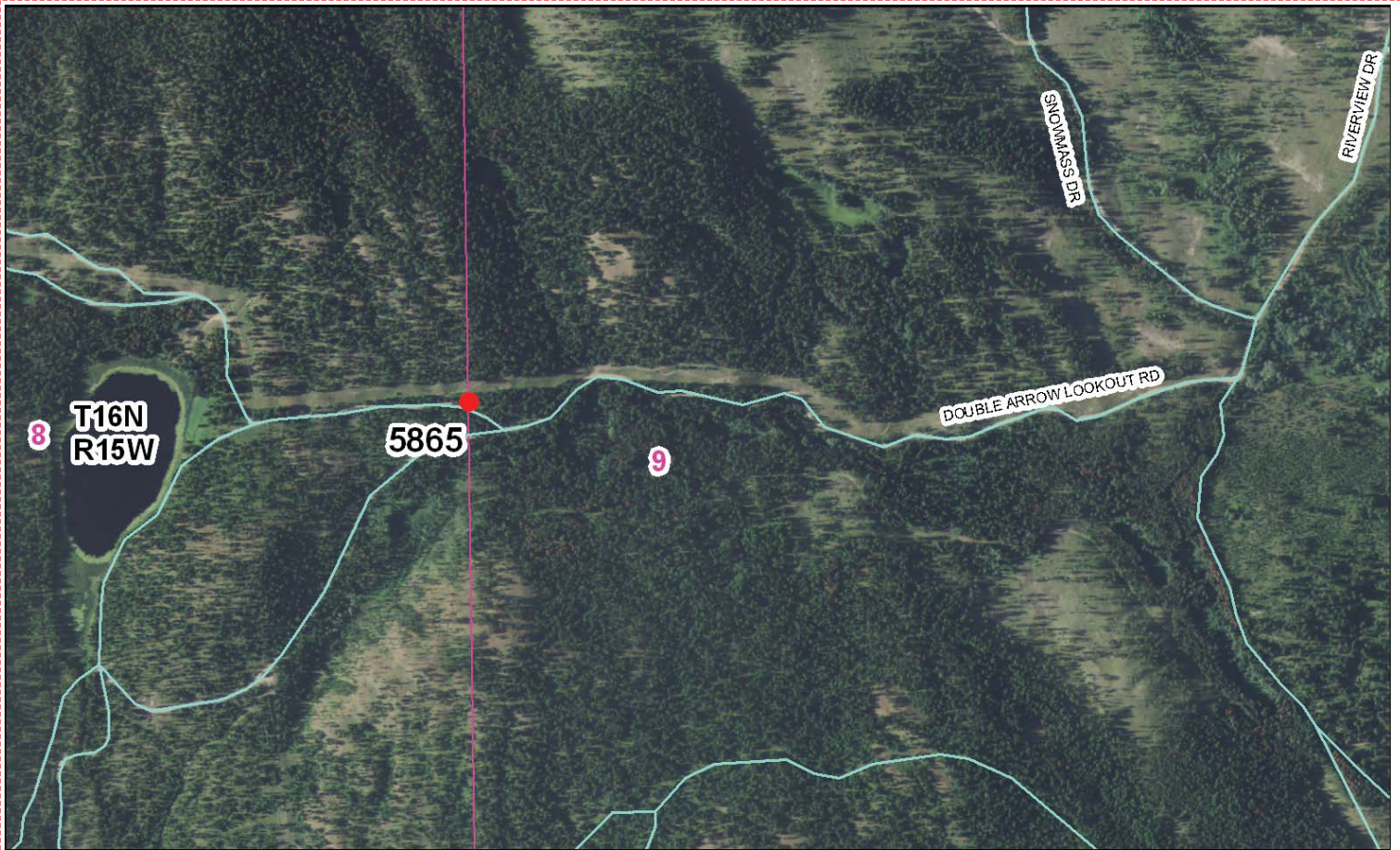


### Photo Looking South



Point # 5865

**To Reach:** 2wd access to within 75 feet of the monument.



Map of Area

RI-1150-1

**CERTIFIED LAND CORNER RECORDATION**  
(REFERENCE FSM 1153.53)

**DESCRIPTION OF CORNER EVIDENCE FOUND, AND ORIGINAL RECORD (IF KNOWN)**  
At the position for the  $\frac{1}{4}$  sec. cor. for secs. 8 and 9, T. 16 N., R. 15 W., P.M.M., found a stone 10" x 11" x 1" 3" above ground not in place with  $\frac{1}{4}$ " on N. face. Stone was 4 ft. from intersection of record distances. (Record) Set a sandstone 20x1/4x10 ins. 15 ins. in the ground, for  $\frac{1}{4}$  sec. cor. marked  $\frac{1}{4}$  on W. face.  
**SEE NOTE BELOW**  
A 28" D. fir bears S81°E, 7.92 ft., scribed  $\frac{1}{4}$ " c rest grown over. (Record) A fir 24 ins. diam. bears S80°E, 12 lks. (.92 ft.) dist. marked  $\frac{1}{4}$ SBT.  
The stump remains bears N32°W, 25.08 ft., no scribing. (Record) A fir 16 ins. diam. bears N32°W, 38 lks. (25.08 ft.) dist. marked  $\frac{1}{4}$ SBT.

**DESCRIPTION OF MONUMENT AND ACCESSORIES ESTABLISHED TO PERPETUATE THE ORIGINAL LOCATION OF THIS CORNER:**

**NOTE:** Using record distances from the stump remains and the D. fir set a 4" U.S.F.S. aluminum pipe with a  $\frac{3}{8}$ " diam. at 4" above the ground marked:  
Barred the cap as above the pipe.  
We established on the trees:  
A 28" diam. tamarack bears N14°E, 26.0 ft., scribed "M".  
Placed BT signs on the trees with bearings and distances from the trees to the corner.  
Placed an attention sign on the D. fir BT.  
Painted the blazes red.  
Piled rocks around the pipe.

Date of work: 5/31/71



**SKETCH, WITH COURSE AND DISTANCE TO ADJACENT CORNERS IF DETERMINED IN THIS SURVEY.**  
(MAY SKETCH OR PASTE REPRODUCTION ON REVERSE SIDE.)

Surveyor's Seal



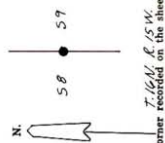
I, RONALD L. BENTON, certify that the information shown herein is true and correct.

*Ronald L. Benton*  
Signature of Ground Party Chief

I, STANLEY J. SKOUSEN, certify that I have carefully performed or reviewed the work done on the diagrammed corner as reported on this recordation form and approve the same.

*Stanley J. Skouisen*  
Signature of Surveyor

**DIAGRAM OF CORNER:**



25325  
Registration Number

426373

Office of Clerk and Recorder, County of MISSOULA  
This "corner record" was filed for record on the 29 day of June 1971. Was noted on the cross-index plot and is assigned page No. 504 CA, in book No. G-9 T. 16 N., R. 15 W., Mer.

County Official P.M.M.  
Cross Index No. G-9 T. 16 N., R. 15 W., Mer.

ROBERTA FRANK, County Clerk  
By *Roberta Frank*  
DEPUTY

**Corner Recordation Form or Other Supporting Document**

Point # 5865