

Missoula County Control Point Datasheet

Monument Description: Stone w/ small punch mark at apex

Project Name: Seeley Lake

Station Description: 1/4 Corner

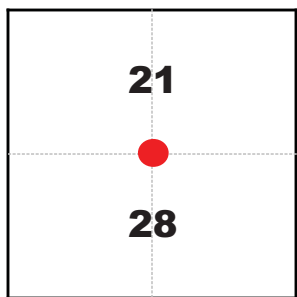
Date Visited: Aug. 16, 2010

Monument Stability: C GPS Visibility: C+

Observer: SEN - CLG

Quad. Name: Belmont Point

T. 16 N. R. 15 W.



NAD 83 (2007) Lat/Long Position

47°07'14.919"N

113°30'16.619"W

NAVD 88 Elevation: 4133.0 sft.

Notes:

Photo of Monument



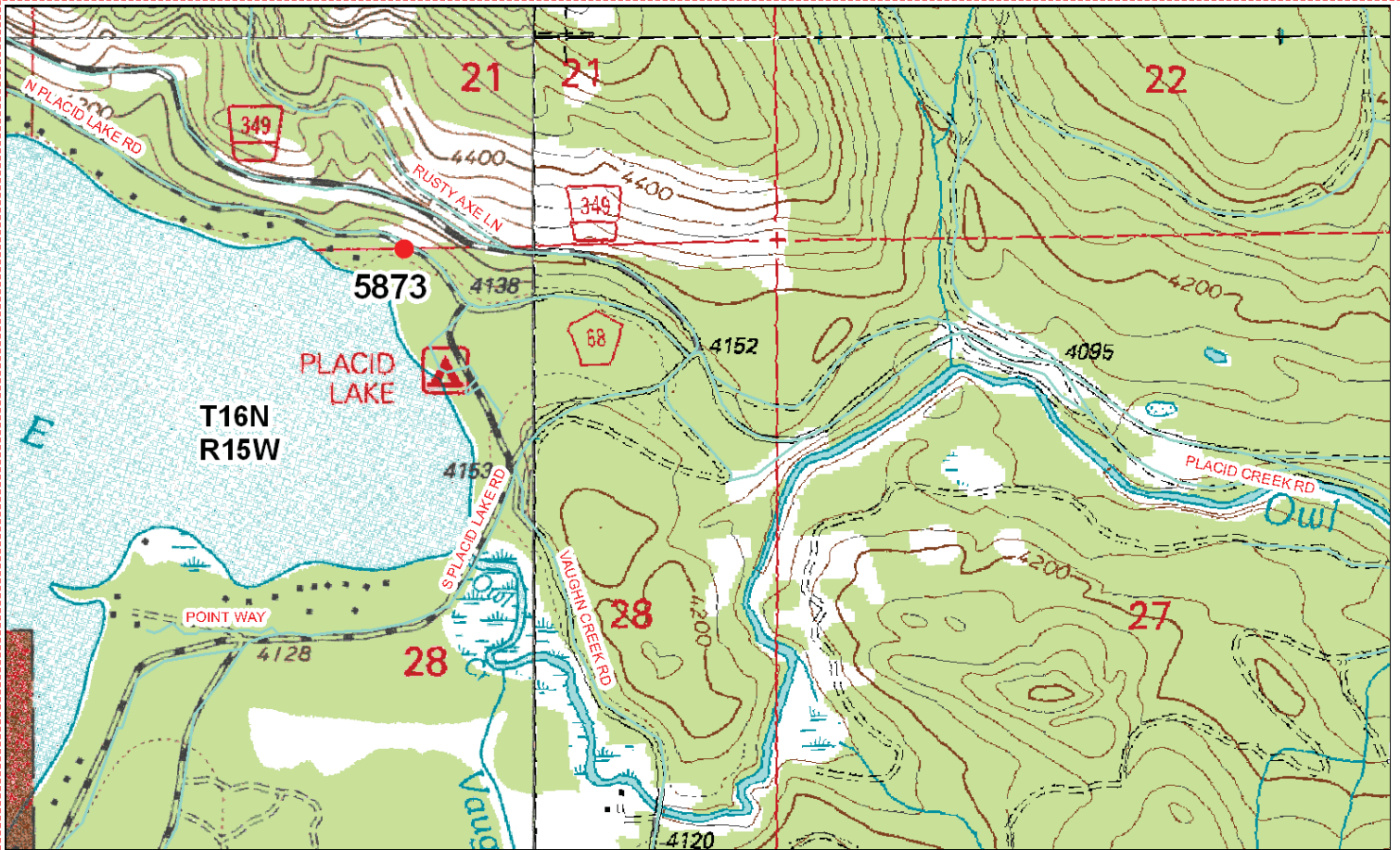
Photo Looking North



Photo Looking West



To Reach: 2wd access.



Map of Area

CERTIFIED LAND CORNER RECORDATION

DESCRIPTION OF CORNER EVIDENCE FOUND, AND ORIGINAL RECORD (IF KNOWN)

Original record not known

DESCRIPTION OF MONUMENT AND ACCESSORIES ESTABLISHED TO PERPETUATE THE ORIGINAL LOCATION OF THIS CORNER:

Date of work: Aug. 16, 1977.

Found a 12" x 10" x 10" above ground marked 1/4 on the north face. Stone is well set and in a mound of stone. No original bearing trees found. A 3" steel pipe is set alongside the original stone. A 12" Ponderosa Pine bears S.83°N., 57.2 feet with a bearing tree sign attached.

SKETCH, WITH COURSE AND DISTANCE TO ADJACENT CORNERS IF DETERMINED IN THIS SURVEY. (MAY SKETCH OR PASTE REPRODUCTION ON REVERSE SIDE.)

Surveyor's Seal



I, William D. Beyer, certify that the information shown herein is true and correct.

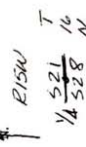
Signature of Ground Party Chief

Signature of Surveyor

I, William D. Beyer, certify that I have carefully performed or reviewed the work done on the diagrammed corner as reported on this recordation form and approve the same.

Signature of Surveyor

DIAGRAM OF CORNER:



• = Corner recorded on the sheet

Registration Number 406461

Office of Clerk and Recorder, County of Missoula at 12:00 P.M. This "corner record" was filed for record on the 17 day of Aug 1977, was noted on the cross-index plat and is assigned page No. 5785a.

ROBERTA FRANK, County Clerk Mer. By: Roberta Frank

Corner Recordation Form or Other Supporting Document

Point # 5873