

# Missoula County Control Point Datasheet

Monument Description: 3-1/4" Aluminum Cap 2923S

Project Name: Seeley Lake

Station Description: 1/4 Corner

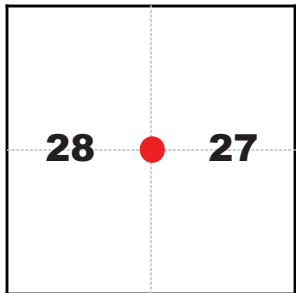
Date Visited: Aug. 16, 2010

Monument Stability: C      GPS Visibility: C

Observer: SEN - CLG

Quad. Name: Salmon Lake

T. 16 N. R. 15 W.



### NAD 83 (2007) Lat/Long Position

47°06'48.753"N

113°29'37.721"W

NAVD 88 Elevation: 4124.5 sft.

Notes:



Photo of Monument



Photo Looking North

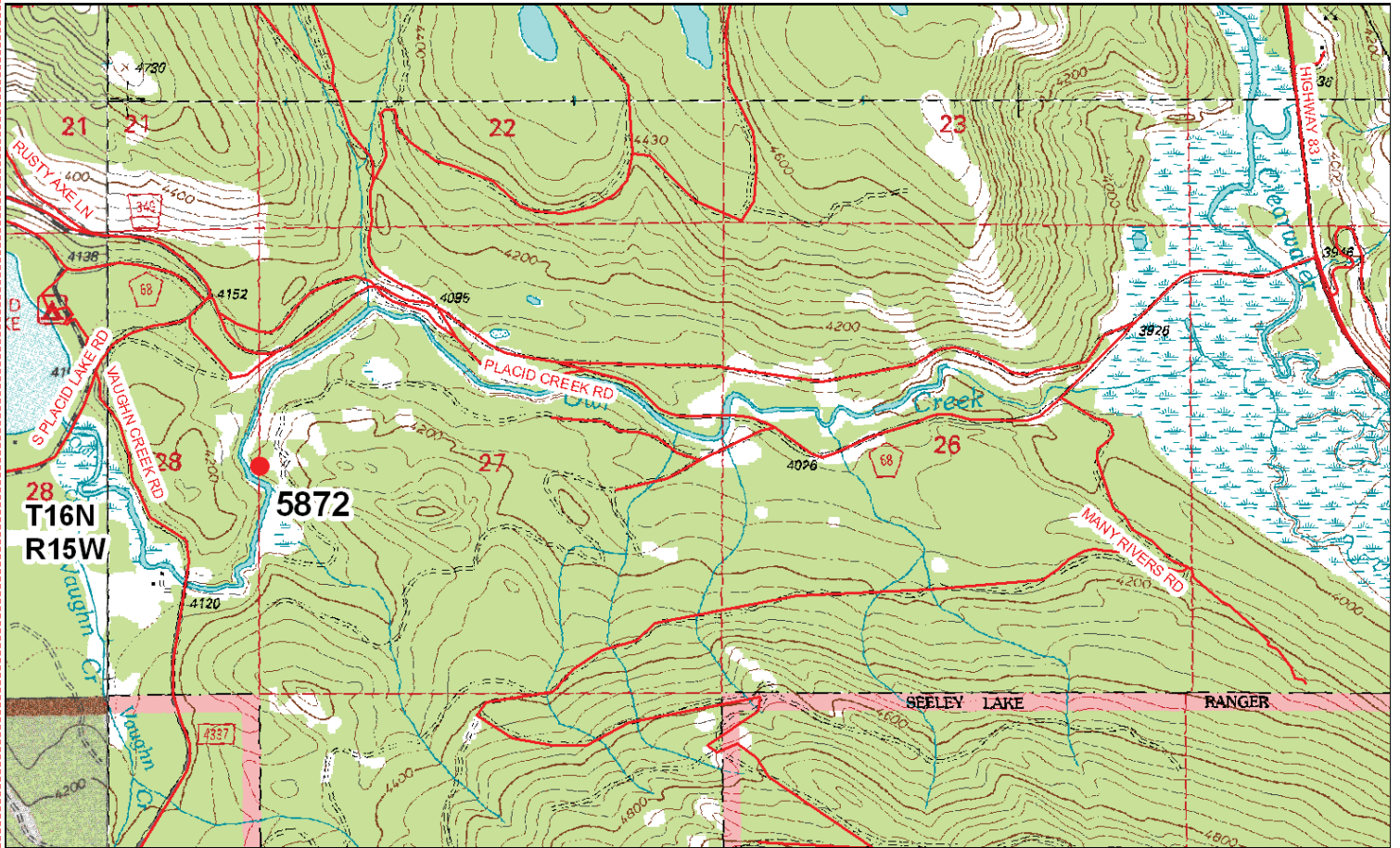


Photo Looking East



Point # 5872

**To Reach:** 2wd access to within 250 feet, need Plum Creek key.



Map of Area

INSTRUCTIONS

1. Original and/or subsequent record need to be kept in the county office.
2. Description of evidence found, and description in the record, need method of establishing line or delineated corners.
3. Location of evidence found, and description in the record, need method of establishing line or delineated corners.
4. Description of evidence found, and description in the record, need method of establishing line or delineated corners.
5. Certification must be signed and sealed by Registered Land Surveyor in State of Missouri.
6. Fill in Cross Index & Section Diagram as follows:

**CERTIFIED CORNER RECORDATION**

Corner 1/4 28/27 T. 16 N. R. 15 W. P.M.M. Missouri County

1890 (GLO) Set a sandstone 19" x 9" x 7", 15" in the ground, marked 1/4 on west face from which a 24" pine bears N. 40° 30' E., 44.2 ft., 30 in. pine N. 47° W., 57.4 ft.

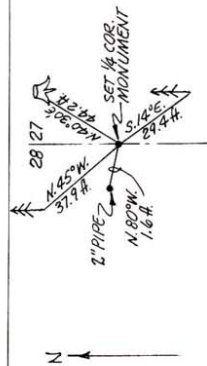
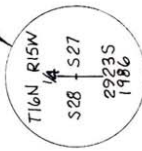
1986 (PCI) Found original stone marked 1/4 in a rock pile from which the stump core of a pine tree with a hardened face with scribing visible lying in the duff bears N. 40° 30' E., 44.2 ft. also found:

9 in. pine bears S. 14° E., 29.4 ft. with a healed face

24 in. pine bears N. 45° W., 37.9 ft., with a blaze with axed out face.

2 in. pipe bears N. 80° W., 1.6 ft.

At the position of the stone I set a 3 1/4 in. x 30 in. aluminum monument 22 ins. in the ground, marked



CERTIFICATION  
 I, Michael P. LeJeune  
 State of Missouri Professional Land Surveyor  
 No. 29235  
 Date: 6/2/86  
 Registered Professional Consultants, Inc.

**SKETCH OF CORNER**

Office of Clerk and Recorder, County of Missouri, This "corner record" Sec. 28

was filed for record on the 27 day of June 19 86, was noted on the cross-index plat and is assigned page No. 1575, in book No. 3421A/100 by PERRY HART, Missouri County Clerk

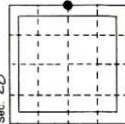
DOC:CR

No fee

8611981

T-13 T. 16 N. R. 15 W. P.M.M.

Corner Index No. 210-1575



**Corner Recordation Form or Other Supporting Document**

Point # 5872