

Missoula County Control Point Datasheet

Monument Description: 1-1/2" Brass Cap 2923S

Project Name: Seeley Lake

Station Description: Section Corner

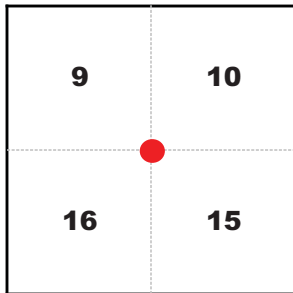
Date Visited: Aug 11, 2010

Monument Stability: C- GPS Visibility: C+

Observer: CLG

Quad. Name: Seeley Lake East

T. 16 N. R. 15 W.



NAD 83 (2007) Lat/Long Position

47°09'00.477"N

113°29'39.513"W

NAVD 88 Elevation: 4180.7 sft.

Notes:

Photo of Monument



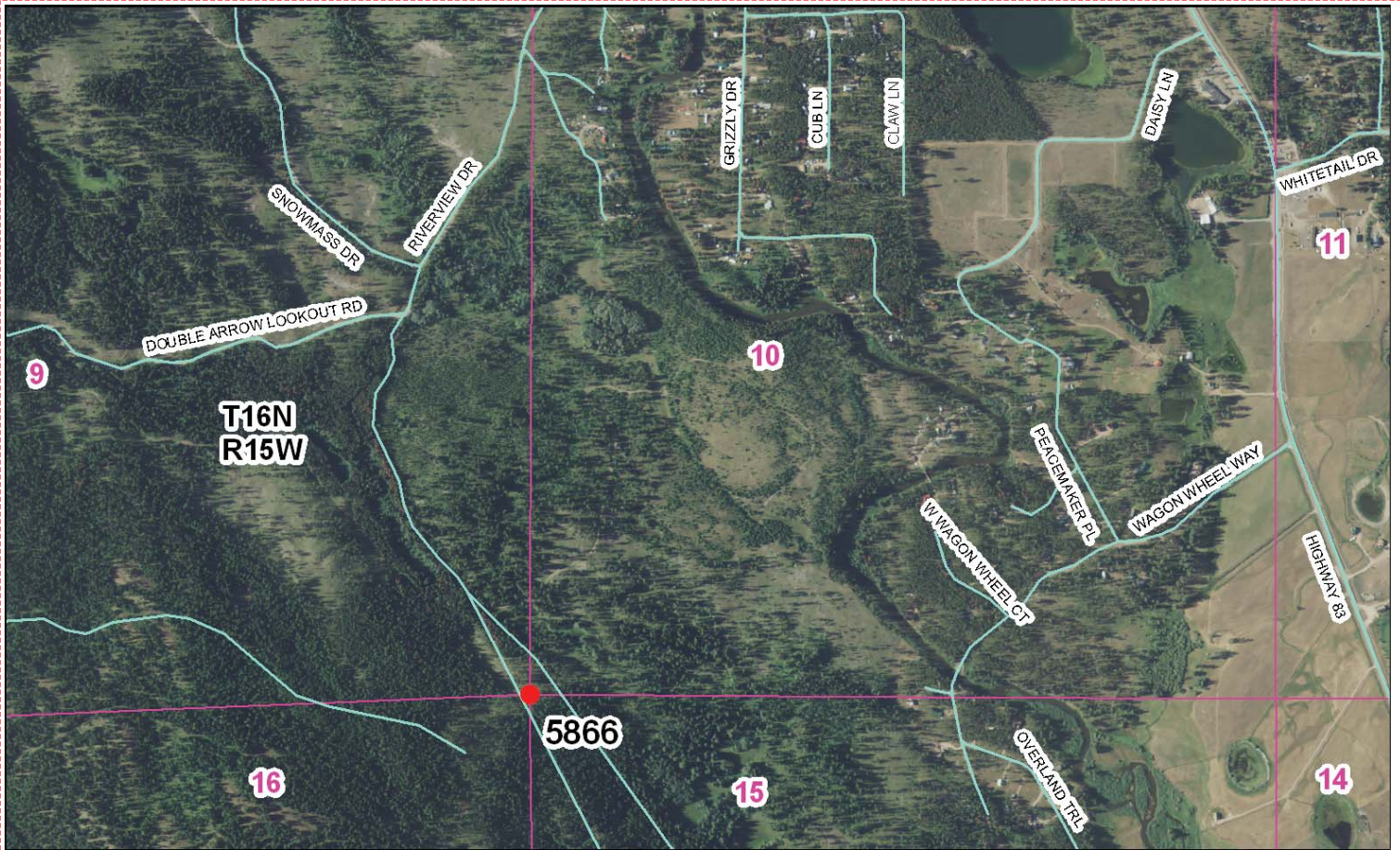
Photo Looking North



Photo Looking West



To Reach: 2wd access with Plum Creek key.



Map of Area

CERTIFIED LAND CORNER RECORDATION

DESCRIPTION OF CORNER EVIDENCE FOUND, AND ORIGINAL RECORD (IF KNOWN)

At the Section Corner of Sections 9, 10, 15 & 16, T.16N., R.15W., Principal Meridian Montana, Missoula County, Montana.
 Record: Set a sandstone 12x12x10 ins. marked with 4 notches on S. and 3 notches on E.
 From which:
 A larch 19" diam. bears N.20°30'E., 28 lks. distant.
 A larch 18" diam. bears S.42°E., 30 lks. distant.
 A larch 18" diam. bears S.55°20'W., 33 lks. distant.
 A larch 20" diam. bears N.56°20'W., 34 lks. distant.
 We find: 13x10x4 in. sandstone laying loose one side had been broken. We find 1 notch at break edge unable to locate remaining stone in ground. We also find two trees with scribing and two that fit stump pattern.

DESCRIPTION OF MONUMENT AND ACCESSORIES ESTABLISHED TO PERPETUATE THE ORIGINAL LOCATION OF THIS CORNER:

Date of work: Feb., 1971
 We set 1 1/2" B.C. where distance from BT's intersect.
 To perpetuate this corner we established the following reference monuments:
 A Tamarack 10" diam. bears N.73°30'E., a dist. of 25.40 feet.
 A Fir 8" diameter bears S.40°00'E., a dist. of 33.20 feet.
 A Tamarack 6" diam. bears S.62°00'W., a dist. of 31.8 feet.
 A Tamarack 6" diam. bears N.44°00'W., a dist. of 16.80 feet.



(Variance used 20"E.)
 SKETCH, WITH COURSE AND DISTANCE TO ADJACENT CORNERS IF DETERMINED IN THIS SURVEY.
 (MAY DETACH OR PASTE REPRODUCTION ON REVERSE SIDE.)

DIAGRAM OF CORNER:

I, Denis Applebury, certify that the information shown herein is true and correct.
 Signature of Second Party
 I, Richard A. Ainsworth, certify that I have carefully performed or reviewed the work done on the diagram corners reported on this recordation form and approve the same.
 Signature of Surveyor



AINS WORTH & ASSOCIATES
 2923S
 Registration Number

Office of Clerk and Recorder, County of Missoula
 This "corner record" was filed for record on the 29 day of March, 1971, in Book No. 150, assigned page No. 215.6, in Book No. 150, by Denise Applebury, County Clerk.
 Cross Index No. 5-13 T.16N. R.15W. Mer.

Corner Recordation Form or Other Supporting Document

Point # 5866