

Missoula County Control Point Datasheet

Monument Description: 3-1/4" Aluminum Cap MDOH 2923S

Project Name: Seeley Lake

Station Description: Section Corner

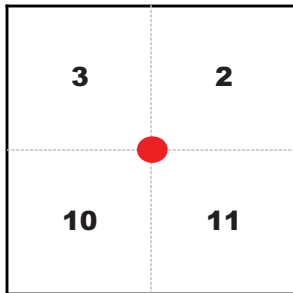
Date Visited: Aug. 5, 2010

Monument Stability: B GPS Visibility: C

Observer: SEN - CLG

Quad. Name: Seeley Lake East

T. 16 N. R. 15 W.



NAD 83 (2007) Lat/Long Position

47°09'52.532"N

113°28'22.769"W

NAVD 88 Elevation: 4037.3 sft.

Notes:

Photo of Monument



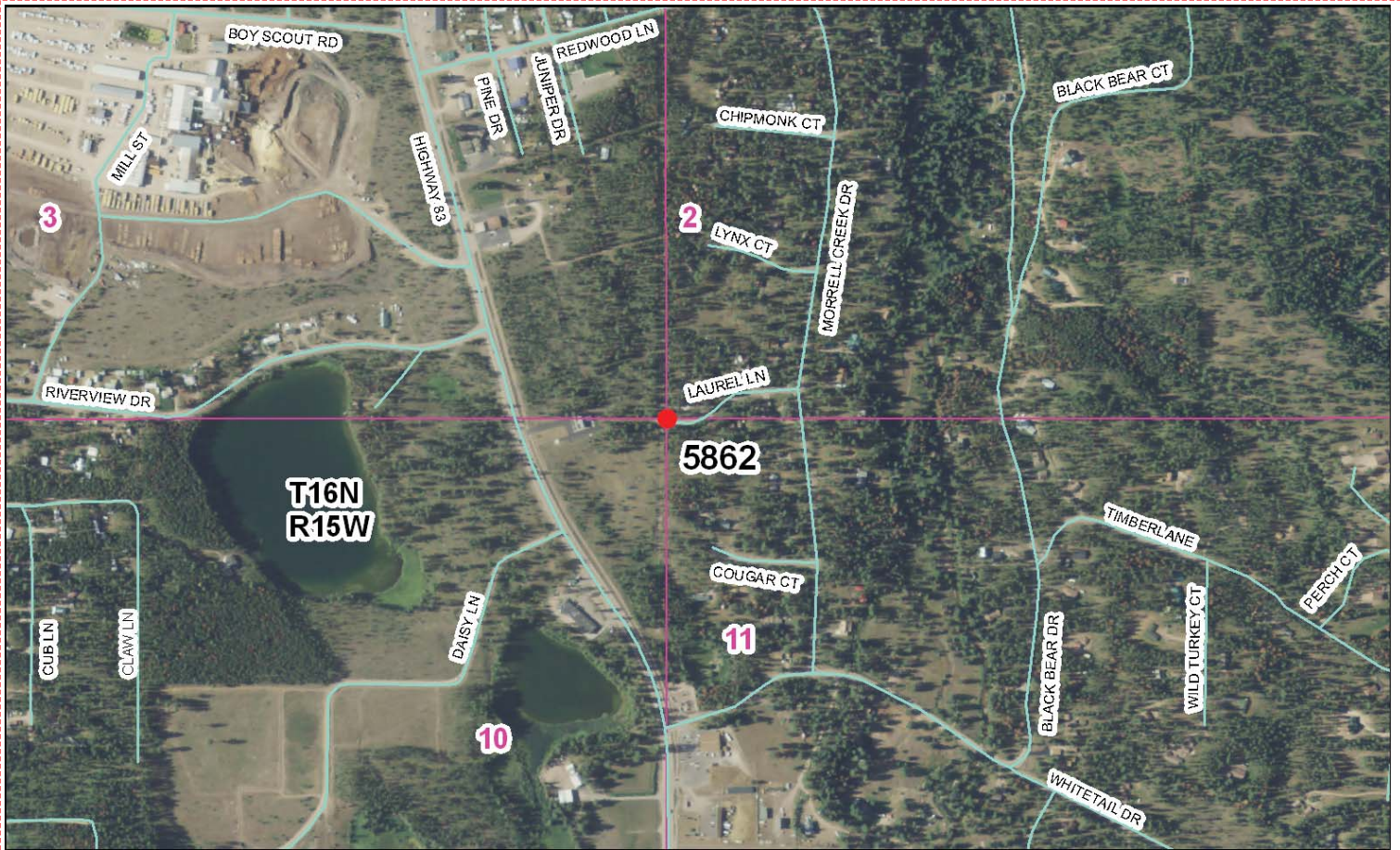
Photo Looking East



Photo Looking North



To Reach: 2wd access.



Map of Area

BOOK 307 P. 0228

CERTIFIED CORNER RECORDATION

Corner $\frac{312}{10/11}$ T. 16N R. 15W P.M.M. Missoula County

FILE RECORD - 1890: Set a sandstone, 19x12x8 ins., 15 ins. in ground for sec. cor. to secs. 2, 3, 10 & 11, marked with 5 notches on S. and 2 notches on E. edges, from which:

- * A pine, 19 ins. dia. bears N.72°E., 7.9 ft.
- * A pine, 18 ins. dia. bears S.12°W., 14.5 ft.
- * A pine, 20 ins. dia. bears S.42°10"W., 12.48 ft.
- * A pine, 16 ins. dia. bears N.57°20"W., 8.6 ft.

RECORD - 1971 - Corner Recordation Form - Ainsworth, #29235: We find a 19x8x7 inch sandstone set in ground having 5 notches on the S., 2 notches on E., 1 notch on N. and 4 notches on W. faces. There is also an "M" scribed in the top of the stone. A fallen over stump with burnt face bears N.72°E., 7.9 feet. Stone has obviously been re-set from original ground level because it is in ditch along side of new road. Other RTs fall in new road.

We leave stone as we found it. To perpetuate the original location of this corner we scribe the following RTs:

- * A 10" lodgepole pine bears N.47°E., 22.2 ft.
- * A 14" pine bears S.72°E., 29.9 feet.
- * A 20" pine bears S.75°W., 82.4 feet.
- * A 12" pine bears N.70°W., 84.5 feet.

FOUND - 1989: We find a 19"x10"x7" stone with a "M" scribed in top and 4 notches on W., 5 notches on S., 2 notches on E. and 1 notch on N. faces. Stone is buried 1.0 feet below the surface of a gravel road intersection (N-S-E-W) Stone falls to the East side of the N-S road and in the center of the E-W road. We also find a 1" iron pipe w/1/4" VPC "PCI-728-1880" along side stone. Assumed this was placed here to help locate the stone w/mental locator)

We accept this stone as being the best evidence of the corner and at the position of the stone, we set a standard MOON 3/4" aluminum cap on a 2 1/2" x 30" aluminum pipe (cap stamped as noted), 0.3' below surface of road. (stone buried, upside down at East edge of aluminum pipe).

See reverse side of form for perpetuation.

See Certificate of Survey No. 3752

STATE OF MONTANA
DEPARTMENT OF REVENUE
STATEMENT OF NO DUPLICATION
1989
29238

Commissioner
Duane Schmitz
Notary Public for Montana
I, Duane Schmitz, Notary Public for Montana, do hereby certify that the above is a true and correct copy of the original recordation as filed with me on this 17th day of August, 1989.

Office of Clerk and Recorder, County of Missoula. This "corner record" was filed for record on _____, was noted on the cross-index plat and is assigned page No. _____, in book No. _____.

County Official
Chas. L. H. No. 117 - 162-6154 - 1989
Adopted July 1, 1981, Montana Board of Professional Engineers & Land Surveyors

307-6028

Corner Recordation Form or Other Supporting Document

BOOK 307 P. 0229

From the set aluminum cap:

- * A 22" pine with an open blaze and "M" scribe bears S.76°W., 82.4 feet. Tree is also utilized as a gate post and we place a K-tag on it.
- * A 15" pine with an open blaze and "M" scribe bears N.72°W., 84.2 feet. Tree is also utilized as a gate post and we place a K-tag on it.
- * A power pole w/K-tag bears N.40°W., 38.9 feet.
- * A 5/8" rebar w/1/4" aluminum cap at the SW corner of Lot 92, Double Arrow Ranch - Phase 2, bears N.50°E., 39.45 feet. Set steel post w/MOON decal. (#29238)
- * A 5/8" rebar w/1/4" aluminum cap at the NW corner of Lot 93, Double Arrow Ranch - Phase 2, bears S.44°E., 41.45 feet. Set steel post w/MOON decal. (#29238)

9002359

I, _____, do hereby certify that the above is a true and correct copy of the original recordation as filed with me on this _____ day of _____, 1989.

307-6028

Corner Recordation Form or Other Supporting Document

Point # 5862