

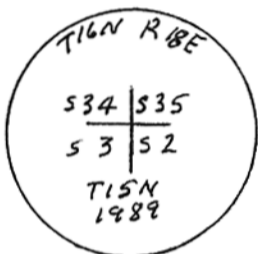
INSTRUCTIONS

1. Original and/or subsequent record used to evaluate the corner position.
2. Description of evidence found, note discrepancies in the record, state method of establishing lost or obliterated corners.
3. Description of monument and accessories set to perpetuate the corner position.
4. Sketch of corner, show all pertinent data which can best be shown in a sketch example, corner marking, topography ties, position of accessories, etc.
5. Certification must be signed and sealed by Land Surveyor registered in the State of Montana.
6. Fill in Cross Index & Section Diagram at bottom of sheet.

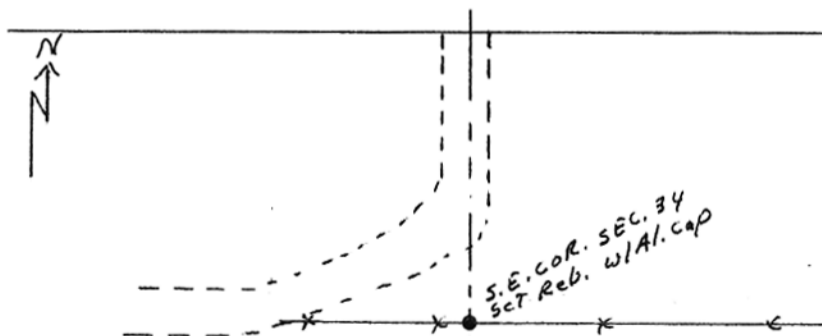
CERTIFIED CORNER RECORDATION

Corner S.E. SEC. 34 T. 16 N R. 18 E P.M.M. FERGUS County

1. ORIGINAL RECORD: Set a sandstone 14 x 12 x 5 ins., 9 ins. in the ground for Corner to Sections 2, 3, 34 and 35 marked with 4 notched W. and 2 notches E. Pits and mound.
2. No evidence found of original stone, pits or mound. At intersection of center of a north running county road, 400 ft. to the north and an E-W fence line, the distance E. to the center of a N-S county road is 12 ft. longer than record and the distance W. to the S.W. Cor. of Sec. 34 is 23 feet longer than record.
3. As best evidence, I accept this position and drove a 5/8" x 30" rebar, 0.4" above the ground beneath the E-W fence and attached a 2" dia. al. cap marked



and drove a wood stake and lath in fence.
No other accessories set.



SKETCH OF CORNER

STATE OF MONTANA
G. S. NASH
L.S. 32105

CERTIFICATION

I, _____ certify the information shown herein is true and correct.

Signature Ground Party Chief _____

I, Stewart Nash certify that this Corner Record correctly represents work performed by me or under my direction in compliance with the "Corner Recordation Act" (70-22-101, et seq., M.C.A.)

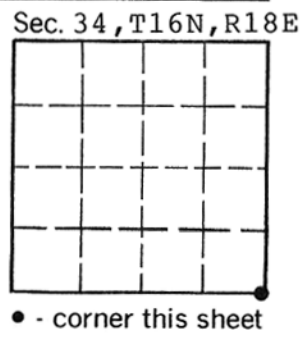
Stewart Nash
Signature of Surveyor & Seal

Date: 5-15-89 Reg. No. 5210S

Employer: SELF

Office of Clerk and Recorder, County of FERGUS. This "corner record" was filed for record on SEP 1 1989 2:00 PM was noted on the cross-index plat and is assigned page No. 11, in book No. 3 08805

Debbie Pallett
County Official



Cross Index No. Z 17 T. 16 R. 18 P.M.M.