

# CERTIFIED CORNER RECORDATION

Corner: West 1/4 Section 10 T. 16 N. R. 18 E. P.M.M. Fergus County

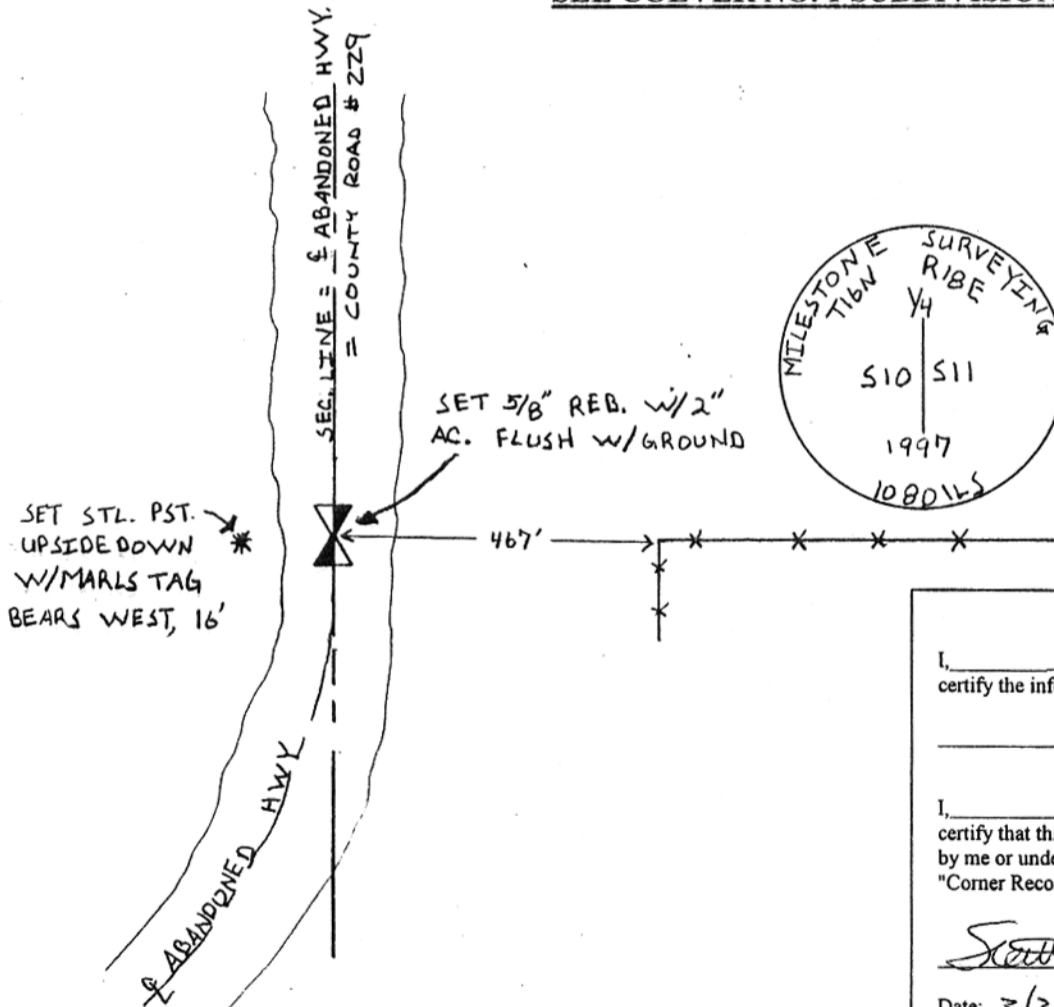
**Original Record:** (G. Robinson 1883) Set sandstone 12 x 7 x 7 inches, 8 inches in the ground for 1/4 sec. cor. marked 1/4 on W. face, dug pits 18, 18, 12 ins. N. & S. of stone 5 1/2 ft. dist. and raised a mound of earth 1 1/2 ft. high, 3 1/2 ft. base alongside.

**Subsequent Record:** County Road No. 229 and the abandoned Highway.

**Evidence Found** (March, 1997) None. Remains of the old county road and the old highway are apparent on the ground.

**Perpetuation:** (March, 1997) At the intersection of the old county road and a projected fence line from the east, set a 5/8" rebar with a 2" aluminum cap. See drawing below.

### SEE COLVER NO. 1 SUBDIVISION



97-91

CERTIFICATION	
I, _____ certify the information shown is true and correct.	
_____ Signature Ground Party Chief	
I, <u>Scott C. Koterba</u> certify that this Corner Record correctly represents work performed by me or under my direct supervision in compliance with the "Corner Recordation Act" (70-22-101, et seq., M.C.A.)	
<u>Scott C. Koterba</u> Signature of Surveyor & Seal	
Date: <u>3/31/97</u> Reg. No. <u>10801 LS</u>	
Employer: <u>Milestone Surveying, Inc.</u>	

Office of Clerk and Recorder, County of FERGUS. This "corner Sec. 10.

record" was filed for record on MAR 31 1997

was noted on the cross-index plat and is assigned page No. 214 in  
 book No. 4 Lathy A. Schubert County Official

Cross Index No. G 17 T. 16 N. R. 18 E. PMM

