

INSTRUCTIONS

1. Original and/or subsequent used to evaluate the corner position
2. Description of evidence found. Note discrepancies in the record, state method of establishing lost or obliterated corners
3. Description of monument and accessories set to perpetuate the corner position.
4. Sketch of corner, show all pertinent data which can best be shown in a sketch example, corner marking, topography ties, position of accessories, etc.
5. Certification must be signed and sealed by Land Surveyor registered in the State of Montana.
6. Fill in Cross Index & Section Diagram at bottom of sheet

61- 401821

CERTIFIED CORNER RECORDATION

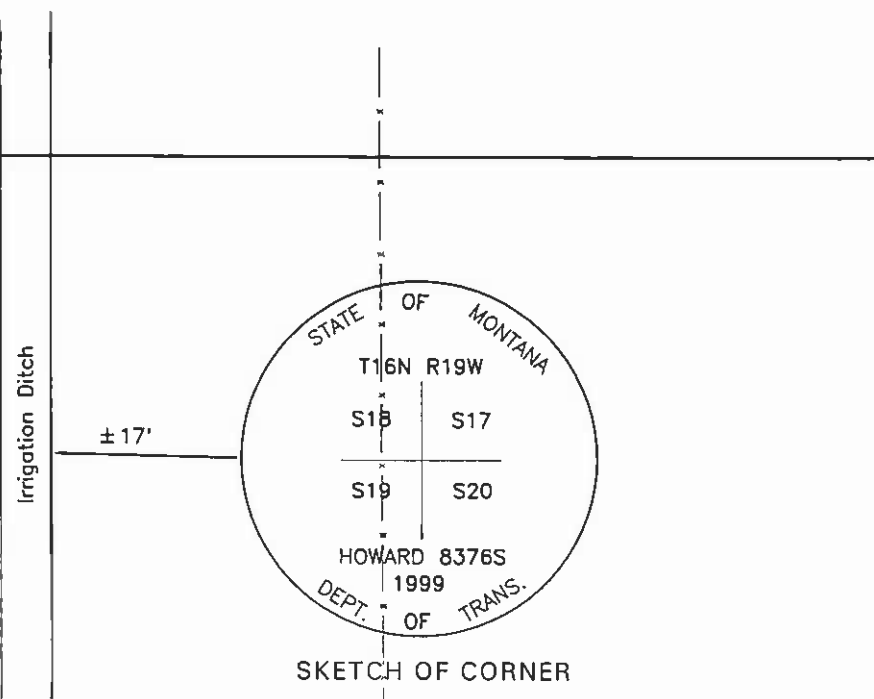
Corner: Section Corner 17, 18, 19, & 20 T. 16N R. 19W P.M.M. Lake & Missoula County

ORIGINAL RECORD: (1905 G.L.O.) Set a granite stone, 15x10x8 ins., 10 ins. in the ground marked with 3 notches on S. and 5 notches on E. edge, and raise a mound of stone, 2 ft. base, 1.5 ft. high, W. of corner.

SUBSEQUENT RECORD: See corner recordation #8301003. Found original stone and a 5/8" rebar with a YPC marked "BIA Flathead" next to the stone.

EVIDENCE FOUND: Found 18"x10"x5" limestone and a 5/8" rebar with a YPC marked "BIA Flathead" 0.45' North of the stone.

PERPETUATION: Set a 3/4" MDT aluminum cap on a 30" aluminum pipe in the position of the stone, with the stone buried alongside. The cap is marked as shown in the sketch. From which;
 A fence post bears North, 20.4' distant; with a MARLS tag.
 A fence post bears South, 23.6' distant; with a MARLS tag.

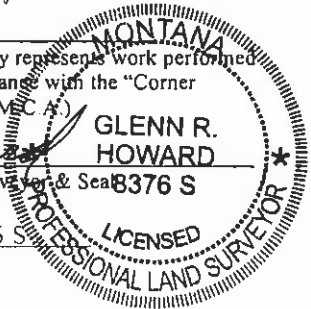


CERTIFICATION
 I, Gerald McCarthy
 certify the information shown herein is true and correct.
Gerald McCarthy
 Signature Ground Party Chief

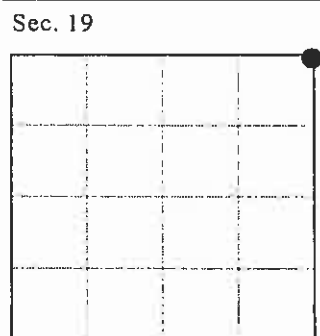
I, Glenn R. Howard
 certify that this Corner Record correctly represents work performed by me or under my direction in compliance with the "Corner Recordation Act" (70-22-101, et seq., M.C.A.)
Glenn R. Howard
 Signature of Surveyor & Seal 8376 S

Date: 7-28-99 Reg. No. 8376 S

Employer: DJ&A, P.C.



Office of Clerk and Recorder, County of Lake. This "corner record" was filed for record on AUG 11 1999 10:49 AM was noted on the cross index plat and is assigned page No. 401821, in Book No. C-2247 RUTH E. HODGES *Judy M. Jones dep* County Official



Cross Index No. N-5 T. 16N R. 19W PMM

Adopted July 1, 1981, Montana Board of Professional Engineers & Land Surveyors

NC

-- corner this sheet