

INSTRUCTIONS

1. Original and/or subsequent record used to evaluate the corner position.
2. Description of evidence found, note discrepancies in the record, state method of establishing lost or obliterated corners.
3. Description of monument and accessories set to perpetuate the corner position.
4. Sketch of corner, show all pertinent data which can best be shown in a sketch example, corner marking, topography ties, position of accessories, etc.
5. Certification must be signed and sealed by Land Surveyor registered in the State of Montana.
6. Fill in Cross Index & Section Diagram at bottom of sheet.

CERTIFIED CORNER RECORDATION

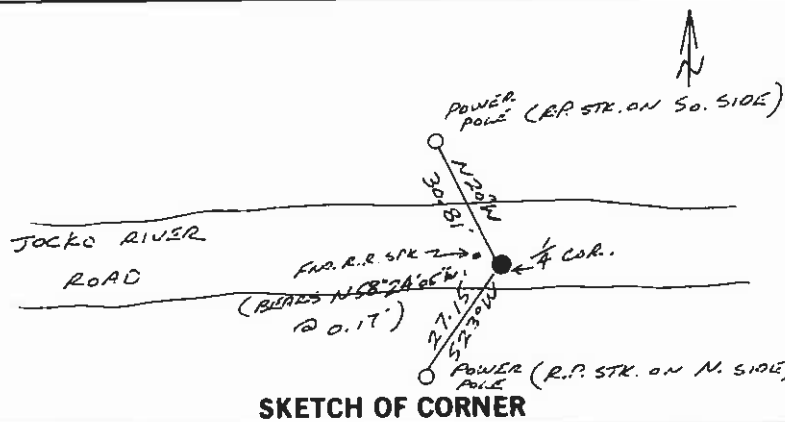
Corner 1/4 COR. COMMON TO T. 16N. R. 19W. P.M.M. LAKE County
 SECTION 8 & 17

RECORD: (1905 G.L.O.) SET A GRANITE STONE, 14X12X10
 INS., 10 INS. IN THE GROUND, FOR 1/4 SEC. COR.,
 MARKED 1/4 ON THE N. FACE; RAISE A MOUND
 OF STONE 2 FT. BASE, 1 1/2 FT. HIGH, N. OF COR.

FOUND: A RAILROAD SPIKE SET BY R.L.S. # 4468 S.

SET: A 5/8" DIA. REBAR WITH CAP STAMPED "MARENGO LS 9012"
 0.3' BELOW SURFACE OF PAVED JOCKO RIVER ROAD.
 CORNER POSITION DETERMINED BY SINGLE PROPORTION
 METHOD.

(SEE REVERSE SIDE)



SKETCH OF CORNER

CERTIFICATION

I, EDWARD L. BROWN
 certify the information shown herein is true and correct.

Edward L. Brown
 Signature Ground Party Chief

I, GREGORY B. MARENGO
 certify that this Corner Record correctly represents work performed
 by me or under my direction in compliance with the "Corner
 Recordation Act" (70-22-101, et seq., M.C.A.)

Gregory B. Marengo
 Signature of Surveyor & Seal

Date: 9/20/89 Reg. No. 90125

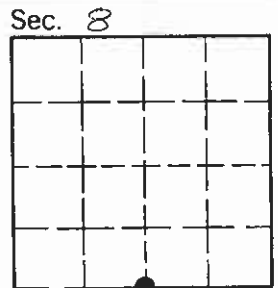
Employer: _____

Office of Clerk and Recorder, County of LAKE. This "corner
 record" was filed for record on SEP 25 '89 at 9:45 A.M.
 was noted on the cross-index plat and is assigned # 320193, in

C-1678

Judy Ann Allen deputy
 County Official

Cross Index No. J-7 T. 16N. R. 19W. P.M.M.



• - corner this sheet