

CERTIFIED LAND CORNER RECORDATION
(REFERENCE FSH 5681.65)

Arlee Pines

DESCRIPTION OF CORNER EVIDENCE FOUND, AND ORIGINAL RECORD (IF KNOWN)

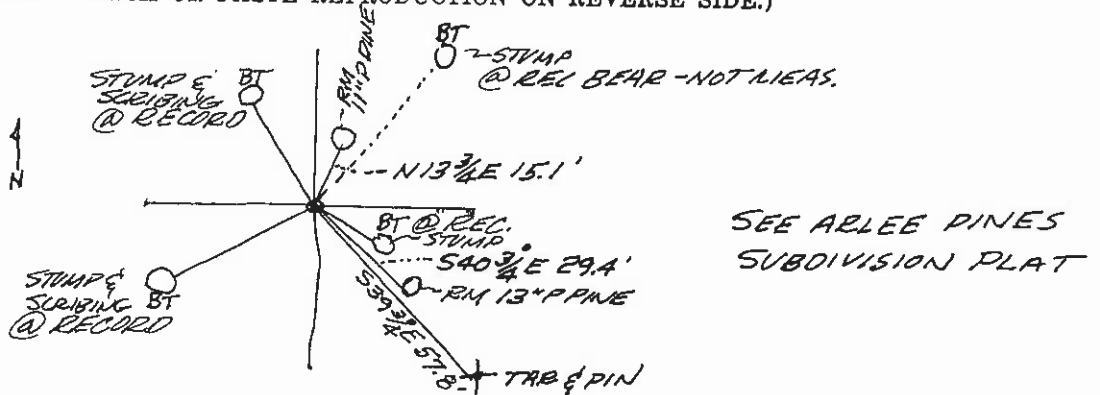
AT THE CORNER OF SECTIONS 14, 15, 22 & 23 T16N R20W
 REC. SET GRANITE STONE 24" X 12" X 6" - 16" IN GROUND... FD. STONE AS DESCRIBED LOOSE ON SURFACE
 REC. BEARING TREES:

			FOUND	
PINE	30"	S45E	14LKS	— STUMP REMAINS, NO SCRIBING 9.2'
"	28"	N32½E	187LKS	— STUMP (NOT USED FOR POSITIONING)
"	24"	S50W	44LKS	— STUMP WITH SCRIBING 29.0'
"	27"	N25°W	105LKS	— " " " 69.3'

DESCRIPTION OF MONUMENT AND ACCESSORIES ESTABLISHED TO PERPETUATE THE ORIGINAL LOCATION OF THIS CORNER:

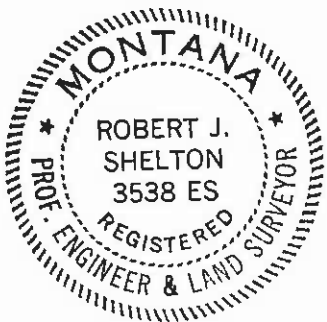
- 1 RESET STONE AT RECORD FROM INDICATED BT'S. Date of work: SEPT 72
- 1 DOUBLE BLAZE & SCRIBE WITH "RM":
 - A PONDEROSA PINE 13" DIA. WHICH BEARS S40¾°E AT 29.4 FT.
 - A " " " " " " " N13¾°E " 15.1 FT.
- A PHOTO PRE MARK TARGET WITH A ½" RE-BAR DRIVEN AT CENTER BEARS S39¾°E AT 57.8 FT; PROJECT PHOTOS & FILM ON FILE WITH WESTERN CARTOGRAPHY INC.

SKETCH, WITH COURSE AND DISTANCE TO ADJACENT CORNERS IF DETERMINED IN THIS SURVEY. (MAY SKETCH OR PASTE REPRODUCTION ON REVERSE SIDE.)



SEE ARLEE PINES SUBDIVISION PLAT

Surveyor's Seal



I, DAVE RUD certify that the information shown herein is true and correct.

Signature of Ground Party Chief

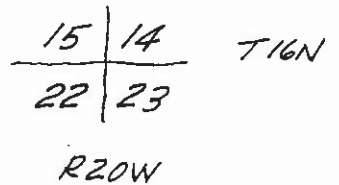
I, ROBERT J. SHELTON certify that I have carefully performed or reviewed the work done on the diagrammed corner as reported on this recordation form and approve the same.

Robert J. Shelton Signature of Surveyor

3538 E.S. Registration Number

DIAGRAM OF CORNER:

N.



= Corner recorded on the sheet

Office of Clerk and Recorder, County of Lake

This "corner record" was filed for record on the 24 day of April, 1973, at 3:22 p.m.

signed page No., in book No. C-381

ETHEL M. HARDING
CLERK & RECORDER
Margaret Brueggeman
County Official

Cross Index No. N-17 T. 16N R. 20W Mer.