

# Missoula County Control Point Datasheet

Monument Description: 3-1/4" BLM Brass Cap

Project Name: Seeley Lake

Station Description: Standard Corner

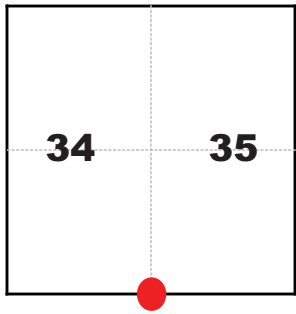
Date Visited: Aug 12, 2010

Monument Stability: B      GPS Visibility: C+

Observer: SEN - CLG

Quad. Name: Seeley Lake East

T. 17 N. R. 15 W.



### NAD 83 (2007) Lat/Long Position

47°10'44.918"N

113°29'04.837"W

NAVD 88 Elevation: 4012.5 sft.

### Notes:

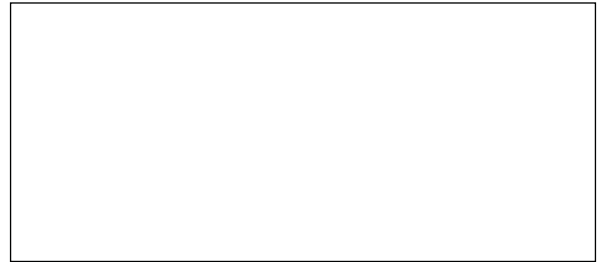


Photo of Monument



Photo Looking North



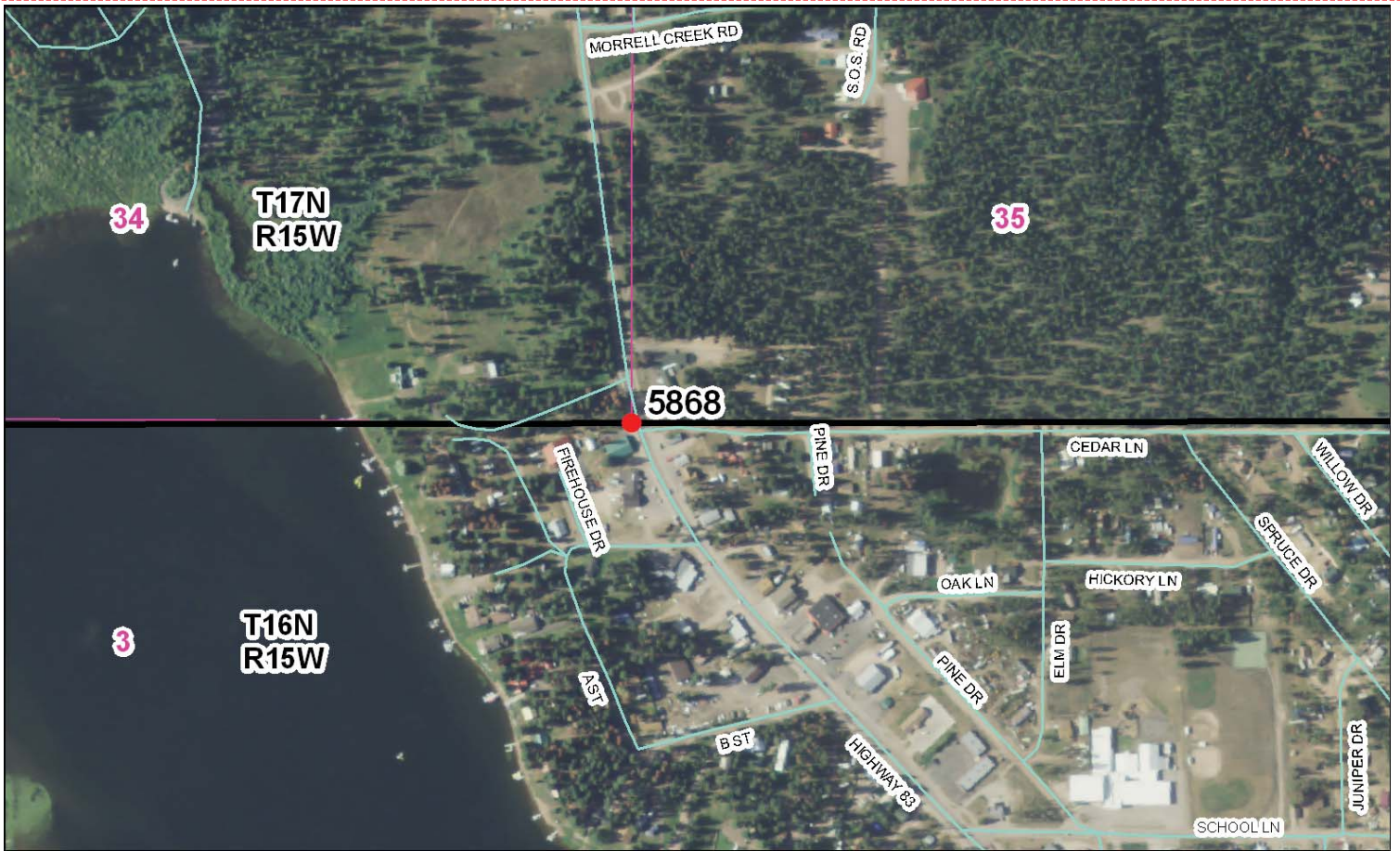
Photo Looking East



Photo Looking South



**To Reach:** 2wd access.



Map of Area

- INSTRUCTIONS**
- Original and/or subsequent record used to establish the corner position.
  - Description of monument and accessories set to perpetuate the corner position.
  - Sketch of corner, show all pertinent data which can best be shown in a sketch example, corner marking, accessories, etc.
  - Reference to any previous record, if any, registered in the State of Missouri.
  - Fill in Cross Index & Section Diagram at bottom of sheet.

**CERTIFIED CORNER RECORDATION**

Standard Common to Sections 34 and 35  
T. 17 N. R. 15 W. P.M., M. Missoula County, Montana

**RECORD #1:** (September 22, 1890) G.L.O. survey by Angus McGillivray  
"Set a sandstone, 16 x 8 x 6 ins., 11 ins. in the ground, for standard cor. to secs. 34 and 35; marked S.C., with 2 notches on E. and 4 notches on W. faces; from which  
A larch, 38 ins. diam., bears N 52° E., 28 lks. dist.; marked T. 17 N., R. 15 W., S. 35, B. T.  
A fir, 16 ins. diam., bears N 60° W., 51 lks. dist.; marked T. 17 N., R. 15 W., S. 34, B. T.  
A fir, 8 ins. diam., bears S. 2° E., 50 lks. dist.; marked T. 17 N., R. 15 W., S.C., S. 34 + 35, B. T."

**RECORD #2:** (1960) B.L.M. monumentation by William E. Stephens  
"The standard cor. of secs. 34 and 35, on the S. by. of the 1p., as determined from the remains of the original bearing trees.  
At the corner point  
Set an iron post, 30 ins. long, 2 1/2 ins. diam., 28 ins. in the ground, in concrete, with brass cap mtd. 17 1/2" x 1 1/2" B.S. 1960  
from which

- The remains of the original bearing trees:
- A fir, 20 ins. diam., bears S. 2° E., 50 lks. dist. (Record)
- A stump, 18 ins. diam., bears N. 60° W., 51 lks. dist. (Record)
- Set a steel T-type fence post, 5 1/2 ft. long, alongside the iron post."

**RECORD #3:** (1973) Corner Recordation Form #457233 by Richard A. Ainsworth  
"...2-1/2" iron post set by B.L.M. in 1967 survey.

See reverse side of form for additional record information.

**FOUND:** (August 12, 2010) A 3-1/4" BLM brass cap, marked as shown, 3" below the asphalt approach to 3195 Hwy 83 N. No evidence of any of the original or subsequent accessories was found.

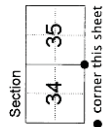
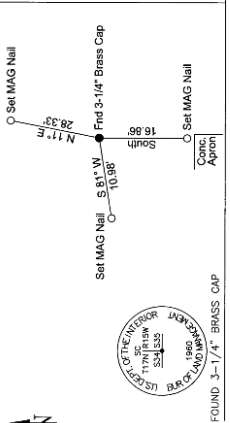
**SET:** Left the brass cap in place, placed a 5" diameter by 3-1/4" iron casing over the monument, level with the asphalt surface. From which:  
A MAG nail in asphalt, bears N 11° E., 28.33 feet.  
A MAG nail in asphalt, just north of a concrete apron, bears South, 16.86 feet.  
A MAG nail in asphalt, bears S 81° W., 10.98 feet.

NAD 83 (2007) Lat. Lon. NAD 83 (2007) SFC Intl. FL  
47°10'44.9175" N 1093037.68 N  
113°29'04.8366" W 978570.35 E  
NAVD88 elevation 4072.5 ft Missoula Co. GPS #5868

**CERTIFICATION**  
I, Steve Niday, certify the information shown on this map is true and correct.

Signature of Steve Niday  
Date: 9-30-10 Reg. No. 10998LS  
Employer: Missoula County Public Works, Survey Office

Signature of Steve Niday  
Date: 9-30-10 Reg. No. 10998LS  
Employer: Missoula County Public Works, Survey Office



201018187 B. 856 P. 1250 Pages: 2  
10/04/2010 10:01:58 AM Corner Recordation  
Vickie M Zeier, Missoula County Clerk & Recorder

Cross Index No. Z-17 T. 17 N., R. 15 W. P.M., M.

Corner Recordation Form or Other Supporting Document

Point # 5868