

Missoula County Control Point Datasheet

Monument Description: 3-1/4" Aluminum Cap 3326S MSLA CO

Project Name: Seeley Lake

Station Description: Closing Corner

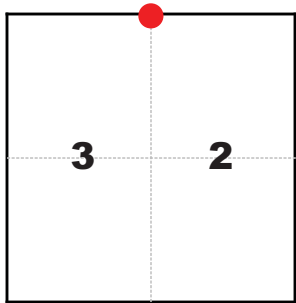
Date Visited: Aug 5, 2010

Monument Stability: B- GPS Visibility: C+

Observer: SEN - CLG

Quad. Name: Seeley Lake East

T. 16 N. R. 15 W.



NAD 83 (2007) Lat/Long Position

47°10'44.991"N

113°28'22.978"W

NAVD 88 Elevation: 4172.7 sft.

Notes:

Photo of Monument



Photo Looking South



Photo Looking West



Point # 5861

To Reach: 2wd access, monument is northeast of the intersection of Cedar Lane and Tamarack Drive.



Map of Area

11 PAGE 1363

INSTRUCTIONS
 1. Use only subsequent record books.
 2. Description of evidence found, not description in the record, state method of establishing set or obliterated corners.
 3. Give date of monument and accessories set to perpetuate the corner position.
 4. Survey of corner, show all pertinent data which can best be shown in a sketch, corner marking, including the position of accessories, etc.
 5. Give name of surveyor and the land surveyor registered in the State of Montana.
 6. Fill in Cross Index & Section Diagram at bottom of sheet.

CERTIFIED CORNER RECORDATION

Corner CC 3/2 T. 16N. R. 15W. P.M.M. MISSOULA County
 RECORD: 1890 Intersect Fourth Standard Parallel North 3.71 chs. E. of 1/4 Sec. Cor., on South boundary of sec. 35, T17N15W where I set a sandstone 20x12x10 ins., 15 ins. in the ground, for closing corner to secs. 2 and 3 marked CC with 2 notches on E. and 4 notches on W. edges; from which
 A Fir, 35 ins. diam., bears S.65°E., 38 lks.(25.08 ft.) marked T18N15W2E1.
 A Larch, 1 ins. diam., bears S.41°W., 17 lks.(11.22 ft.) dist., marked T18N15W3E1.
 A Ponderosa Pine, 17 ins. diam., bears S.24°E., 44 lks.(29.04 ft.) dist., marked T18N15W3E2 & 3B1.

RECORD: 1991 SEE CERTIFIED CORNER RECORDATION DOCUMENT NO. 483305 ON FILE AT OFFICE OF CLERK AND RECORDER, MISSOULA CO. COURTHOUSE, MISSOULA, MT.
 Set a 3 1/4 inch dia. Berntsen monument in concrete in center of depression (placed stone on North side of cap) from which:



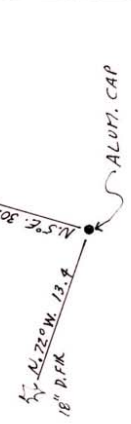
The found Douglas Fir, 16 ins. DBH bears N75°30'W, a distance of 13.3 feet scribed T16N15W. A Missoula County Tag was affixed in addition to the found bearing tree tag.
 The found Douglas Fir, 24 ins. DBH, bears N1°E a distance of 30.3 feet scribed RM in the old scar and affixed Missoula County Bearing Tree Tag.
 A Ponderosa Pine, 17 ins. DBH, which bears S.78°E a distance of 55.4 feet scribed RM with Missoula County Bearing Tree tag affixed.

FOUND: 1993 A 3 1/4 inch dia. alum. cap level with the ground marked as shown above:
 A 22 inch dia. D. fir bears N.5°E., 30.1 ft. scribing visible.
 An 18 inch dia. D. fir bears N.77°W., 13.4 ft. scribing visible.
 MARLS signs were placed on the trees by Missoula County surveyors.

PERPETUATION: Painted the blazes red.
 Decl. 18 1/2°E.



CERTIFICATION
 I certify the information shown herein is true and correct.
 Signature: James A. Flansburg
 I, JAMES A. FLANSBURG
 certify that this former record correctly represents work performed by me or under my direction in compliance with the "Corner Recordation Act" (10-02-1994, MCA 2-2-101).
 Date: 4-22-94 Miss. No. 8643 S
 Employer: LSFS



SKETCH OF CORNER

Office of Clerk and Recorder, County of MISSOULA. This "corner record" was filed for record on April 15, 1994 @ 10:41 AM was noted on the cross-index plate and for assignment page No. 1363 in book No. 411 by James A. Flansburg County Official
 at Missoula County Office
 9409369
 Cross Index No. A-17 r. 16N. R. 15W. pm
 • - corner this sheet 411-1363

Corner Recordation Form or Other Supporting Document

Point # 5861