

INSTRUCTIONS

1. Original and/or subsequent used to evaluate the corner position.
2. Description of evidence found to discrepancies in the record, state method of establishing lost corners.
3. Description of monument and accessories set to perpetuate the corner position.
4. Sketch of corner, show all pertinent data which can best be shown in a sketch example, corner marking, topography ties, position of accessories, etc.
5. Certification must be signed and sealed by Land Surveyor registered in the State of Montana.
6. Fill in Cross Index & Section Diagram at bottom of sheet.

61- 401840

**CERTIFIED CORNER RECORDATION**

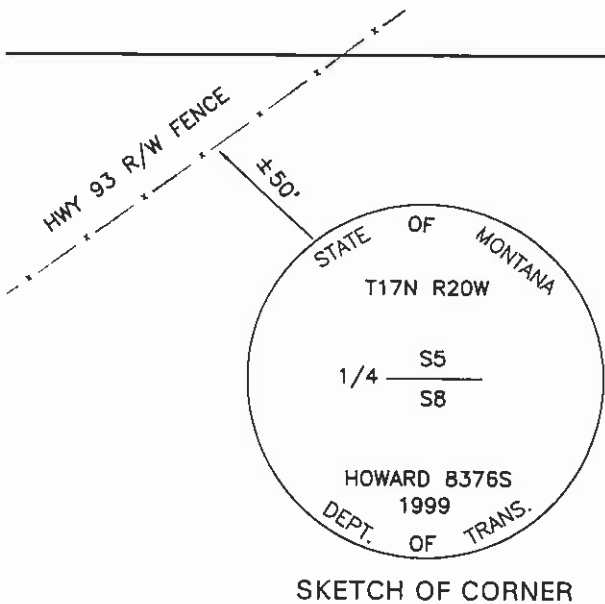
Corner: 1/4 Section Corner 5 & 8 T. 17N R. 20W P.M.M. Lake County

ORIGINAL RECORD: (1904 G.L.O.) Set a sandstone, 16x7x6 ins., 11 ins. in the ground marked 1/4 on N. face; From which;  
 A 20" fir bears N21.75°E, 144 lks. dist. marked "1/4 S5 BT"  
 A 18" pine bears S76.5°W, 162 lks. marked "1/4 S8 BT"

SUBSEQUENT RECORD: See corner recordation #211618. No perpetuation done at this time.

EVIDENCE FOUND: Found a 4"x4"x15" stone with "1/4" on N. face.

PERPETUATION: Set a 3 1/4" MDT aluminum cap on a 30" aluminum pipe in the position of the stone, with the stone buried alongside. The cap is marked as shown in the sketch. From which;  
 A 5" pine bears S39°W, 28.4' distant; with a MARLS tag.  
 An 8" pine bears S66°E, 9.6' distant; with a MARLS tag.



CERTIFICATION

I, Gerald McCarthy  
 certify the information shown herein is true and correct.

*Gerald McCarthy*  
 Signature Ground Party Chief

I, Glenn R. Howard  
 certify that this Corner Record correctly represents work performed by me or under my direction in compliance with the "Professional Land Recordation Act" (70-22-101, et seq., M.C.A.)

*Glenn R. Howard*  
 Signature of Surveyor

Date: 8-9-99 Reg. No. 8376 S

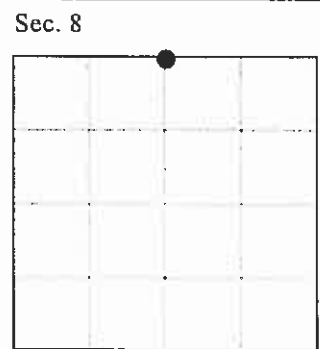
Employer: DJ&A, P.C.

**Professional Land Surveyor Seal:** MONTANA, GLENN R. HOWARD, 8376 S, LICENSED PROFESSIONAL LAND SURVEYOR

Office of Clerk and Recorder, County of Lake. This "corner record" was filed for record on AUG 11 1999 11:14 AM as noted on the cross index plat and is assigned page No. 401840, in Book No. C-2266 County Official Quincy Murray dep

NC

Cross Index No. E-7 T. 17N R. 20W PMM



•- corner this sheet