

INSTRUCTIONS

1. Original and/or subsequent record used to evaluate the corner position.
2. Description of evidence found, note discrepancies in the record, state method of establishing lost or obliterated corners.
3. Description of monument and accessories set to perpetuate the corner position.
4. Sketch of corner, show all pertinent data which can best be shown in a sketch example, corner marking, topography ties, position of accessories, etc.
5. Certification must be signed and sealed by Land Surveyor registered in the State of Montana.
6. Fill in Cross Index & Section Diagram at bottom of sheet.

CERTIFIED CORNER RECORDATION

Corner 7 T. 17N. R. 26W. P.M.M. MINERAL County

RECORD: 1900, GLO. Set a quartzite stone 12x9x5 ins. 8 ins. in the ground for 1-4 Sec. Cor., marked 1-4 on W. face; from which

A tamarack 20 ins. diam. bears N.44½°E. 38 lks.(25.08 ft.) dist. marked 1-4S8BT.

A pine 22 ins. diam. bears S.79½°W. 62 lks.(40.92 ft.) dist. marked 1-4S7BT.

RECORD: 1904, GLO. The fractional subdivision of T.17N., R.26W. made this corner common to sec. 7 only.

RECORD: 1965, BLM. The ¼ sec. cor. of sec. 7, monumented with a slate stone, 13x9x6 ins., firmly set, marked as described in the official record, and witnessed by the remains of the original bearing trees.

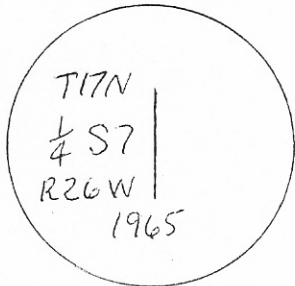
At the corner point

Set an iron post, 30 ins. long, 2½ ins. diam., 24 ins. in the ground, with brass cap mkd. from which

The original bearing trees:

A stump, 22 ins. diam., bears N.46°45'E., 39 lks.(25.74 ft.) dist., mkd. ¼ S8BT. (Record: N.44½°E., 38 lks.)

A stump, 18 ins. diam., bears N.82½°W., 61 lks.(40.26 ft.) dist., mkd. ¼ S7BT. (Record: S.79½°W., 62 lks.)



The new bearing trees:

A spruce, 12 ins. diam., bears S.51°45'W., 39 lks.(25.74 ft.) dist., mkd. ¼ S7BT.

A fir, 8 ins. diam., bears N.38°W., 31 lks.(20.46 ft.) dist., mkd. X ¼ S7BT.

Bury the original stone alongside the iron post.

FOUND: 1997. A BLM brass cap 7 ins. above the ground marked as shown above.

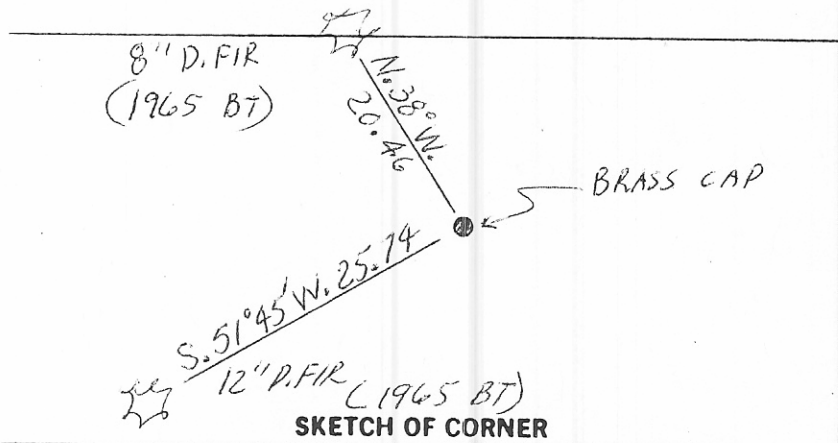
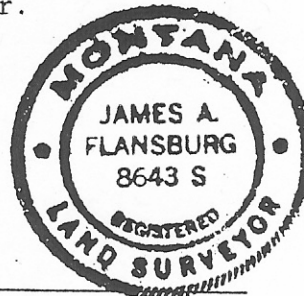
A 12 inch dia. D.fir bears S.51°45'W., 25.74 ft. scribing grown over.

An 8 inch dia. D.fir bears N.38°W., 20.46 ft. scribing grown over.

PERPETUATION: Placed BT and LSM signs.

Painted the blazes red.

Decl. 17½°E.



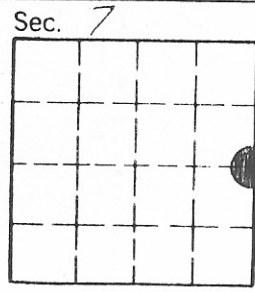
CERTIFICATION

1. EDDO M. FLORI
certify the information shown herein is true and correct.
Eddo M. Flori
Signature Ground Party Chief

1. JAMES A. FLANSBURG
certify that this Corner Record correctly represents work performed by me or under my direction in compliance with the "Corner Recordation Act" (70-22-101 et seq. M.C.A.)
James A. Flansburg
Signature of Surveyor & Seal

Date: 12-19-97 Reg. No. 8643S
Employer: U.S.F.S.

Office of Clerk and Recorder, County of MINERAL. This "corner record" was filed for record on January 6, 1998 at 10:54 A.M. was noted on the cross-index plat and is assigned page No. _____, in book No. _____
Shirley Mancini County Official



Fee: Exempt

Cross Index No. G-5 T. 17N. R. 26W. P.M.M.

• corner this sheet