

DESCRIPTION OF CORNER EVIDENCE FOUND, AND ORIGINAL RECORD (IF KNOWN)

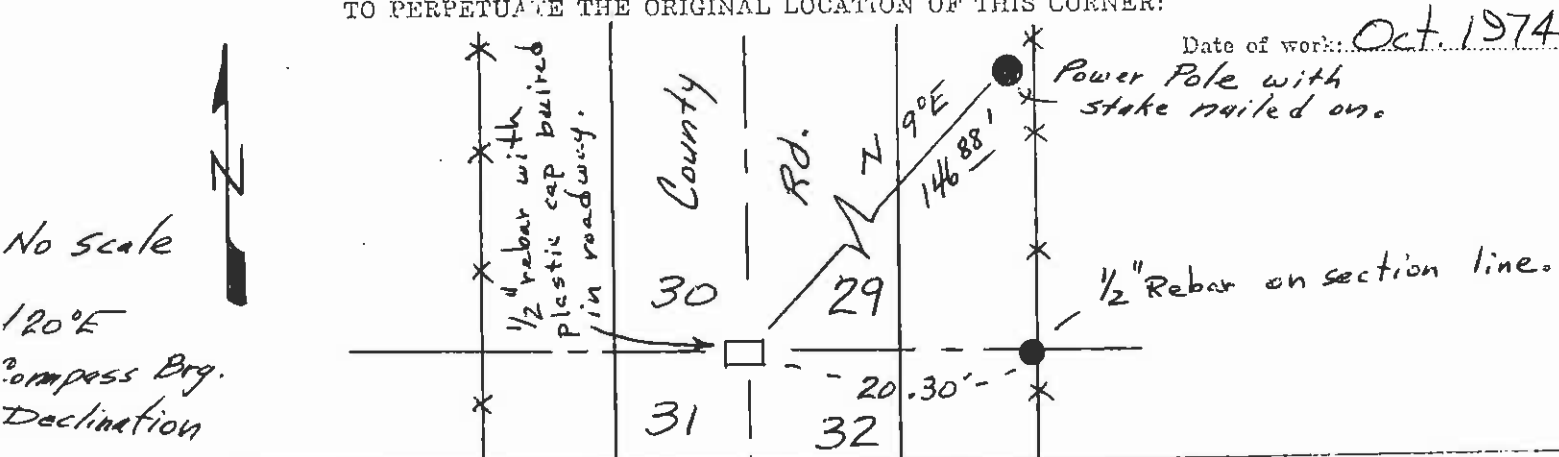
Original record:

80.00 Set a sand stone, 16x10x6 ins., 11 ins. in the ground, for cor. of secs. 29, 30, 31, and 32, marked with 1 notch on S. and 5 notches on E. edge; and raise a mound of stone, 2 ft. base, 1 1/2 ft. high, W. of cor.

Section corner set by the midpoint of the county road north-south and a straight line between the southwest corner stone of Section 30 and the south 1/4 stone of Section 29 to the east.

No evidence found of original. Destroyed by road construction.

DESCRIPTION OF MONUMENT AND ACCESSORIES ESTABLISHED TO PERPETUATE THE ORIGINAL LOCATION OF THIS CORNER:



SKETCH, WITH COURSE AND DISTANCE TO ADJACENT CORNERS IF DETERMINED IN THIS SURVEY. (MAY SKETCH OR PASTE REPRODUCTION ON REVERSE SIDE.)

OVER

DIAGRAM OF CORNER:

Surveyor's Seal



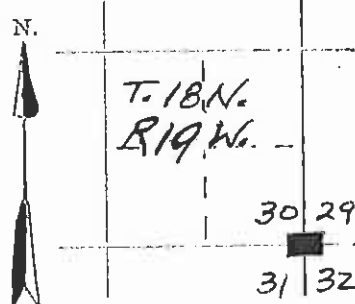
I, _____ certify that the information shown herein is true and correct.

Signature of Ground Party Chief

I, Christopher Balstad Jr. certify that I have carefully performed or reviewed the work done on the diagrammed corner as reported on this recordation form and approve the same.

Christopher Balstad Jr.
Signature of Surveyor

33229
Registration Number



■ = Corner recorded on this sheet

Clerk and Recorder, County of Lake, State of Montana at 4:35 o'clock P..M.

This "corner record" was filed for record on the 11th day of July, 1975, was noted on the cross-index plat and is assigned page No. 222723, in book No. C-584.

Ethel M. Harding, Clerk & Recorder

County Official By: Wm. L. Wynn, De

Cross Index No. 1-5 T. 18 R. 19 Mer.