

CERTIFIED LAND CORNER RECORDATION

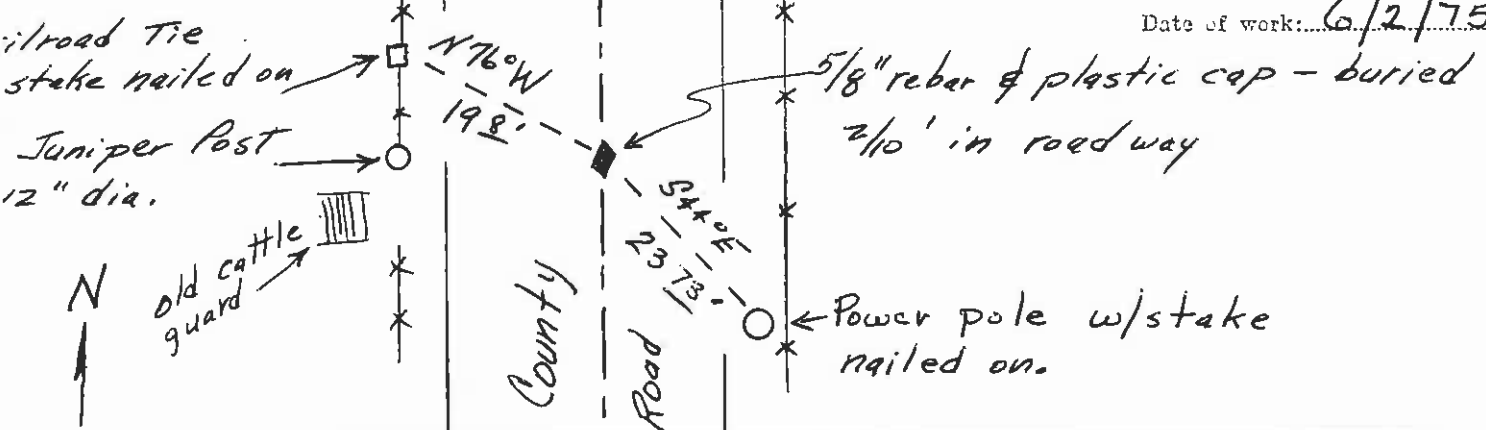
DESCRIPTION OF CORNER EVIDENCE FOUND, AND ORIGINAL RECORD (IF KNOWN)

Original record: 40.00 Set a sand stone, 14x10x5 ins., 10 ins. in the ground, for 1/4 sec. cor., marked 1/4 on W. face; dig pits, 18x18x12 ins., N. and S. of stone, 3 ft. dist., and raise a mound of earth, 3 1/2 ft. base, 1 1/2 ft. high, W. of cor.

No evidence of original stone or pits; destroyed by road construction. This 1/4 corner set by a projection of the old fence line to the west and a straight line between the northeast and southeast section corners. The topog by the Bureau of Reclamation, 1924 shows this corner to be in place and apparently on the line of the west fence.

DESCRIPTION OF MONUMENT AND ACCESSORIES ESTABLISHED TO PERPETUATE THE ORIGINAL LOCATION OF THIS CORNER:

Date of work: 6/2/75



SKETCH, WITH COURSE AND DISTANCE TO ADJACENT CORNERS IF DETERMINED IN THIS SURVEY. (MAY SKETCH OR PASTE REPRODUCTION ON REVERSE SIDE.)

OVER

Surveyor's Seal



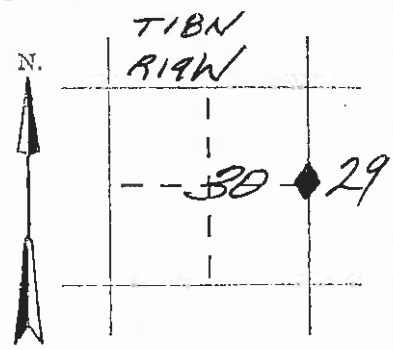
I, _____ certify that the information shown herein is true and correct.

Signature of Ground Party Chief

I, Christopher Balstad Jr. certify that I have carefully performed or reviewed the work done on the diagrammed corner as reported on this recordation form and approve the same.

Signature of Surveyor: Christopher Balstad Jr.

DIAGRAM OF CORNER:



◆ = Corner recorded on the sheet

33225 Registration Number

of Clerk and Recorder, County of Lake, State of Montana

corner record" was filed for record on the 9th day of June 1975, at 9:15 o'clock A. M.

ed page No. 222252, in book No. C-581

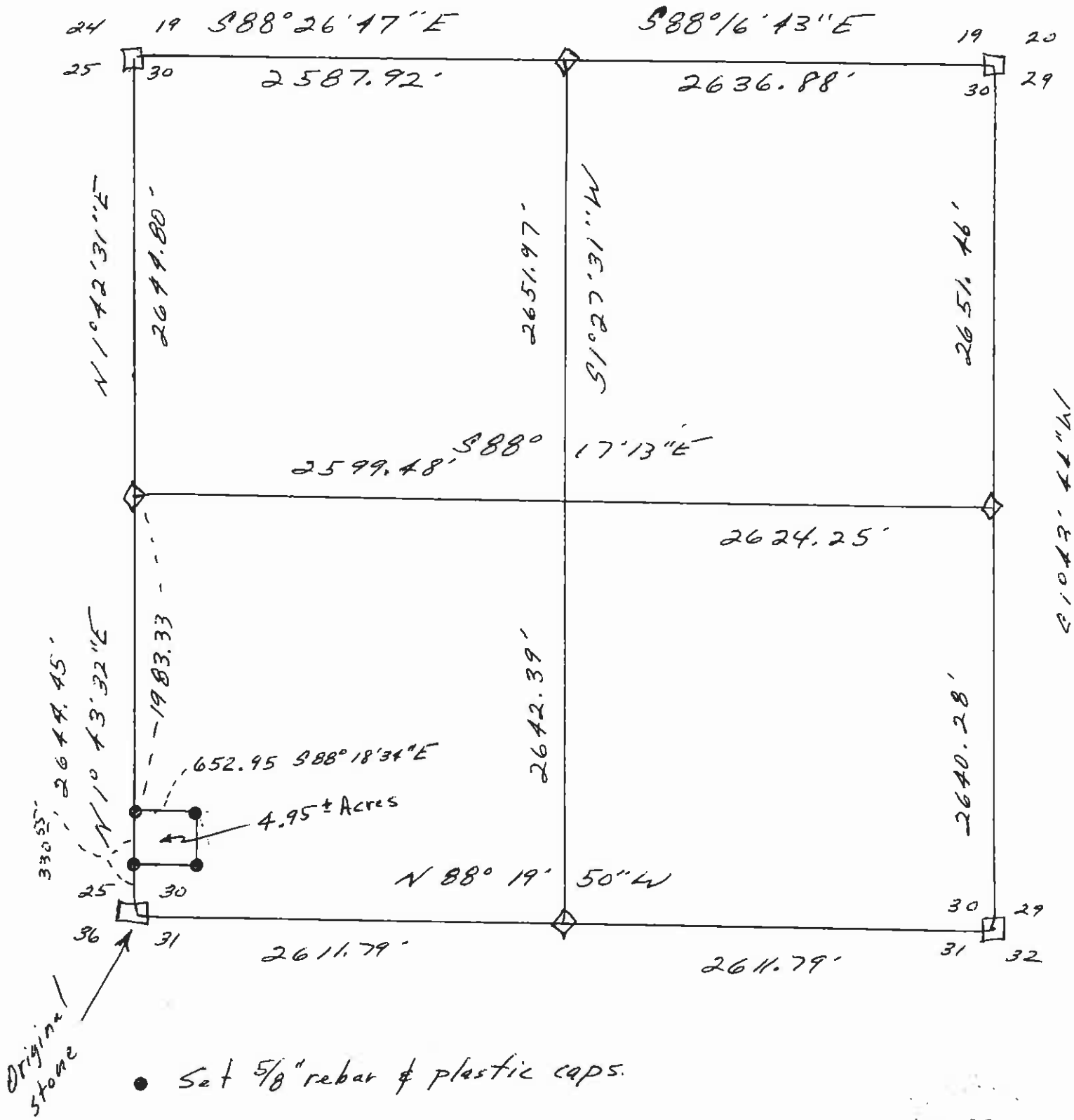
Ethel M. Harding, Clerk and Recorder

County Official By: _____ Deputy

Cross Index No. T-5 T. 18 N. R. 19 W. Mer.



SEC. 30, T. 18N., R. 19W



- Set 5/8" rebar & plastic caps.