

INSTRUCTIONS

1. Original and/or subsequent record used to evaluate the corner position.
2. Description of evidence found, note discrepancies in the record, state method of establishing lost or obliterated corners.
3. Description of monument and accessories set to perpetuate the corner position.
4. Sketch of corner, show all pertinent data which can best be shown in a sketch example, corner marking, topography ties, position of accessories, etc.
5. Certification must be signed and sealed by Land Surveyor registered in the State of Montana.
6. Fill in Cross Index & Section Diagram at bottom of sheet.

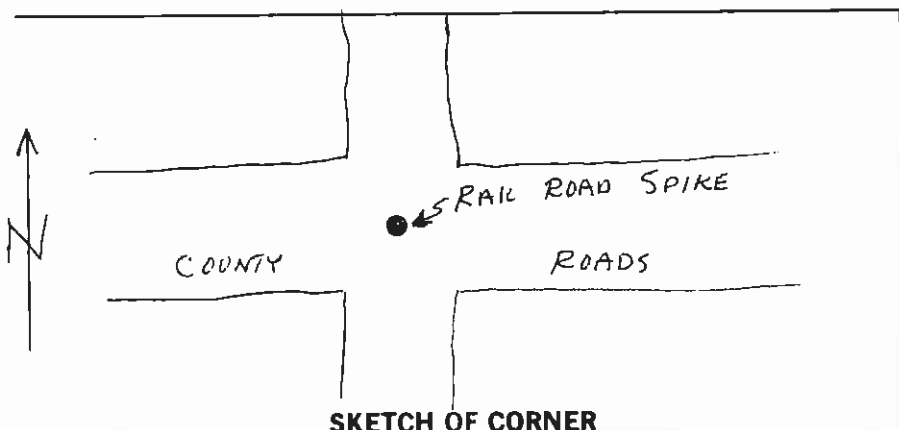
CERTIFIED CORNER RECORDATION

Corner COMMON TO SECS 7, 8, 17, 18 T. 18 N R. 19 W. P.M.M. LAKE County

RECORD: ORIGINAL GLO CORNER POSITION IS IN ROADWAY, NOTHING FOUND OF STONE.

FOUND: A BENT RAIL ROAD SPIKE, 2" BELOW SURFACE OF PAVED ROADWAY.

I REPLACED THE BENT SPIKE WITH A NOTHER RAIL ROAD SPIKE AND MARKED AN "X" IN TOP TO SHOW CORNER POINT. SPIKE IS 2" BELOW SURFACE OF ROADWAY.



CERTIFICATION

I, GREGORY B. MARENGO 9012 S  
 Signature of Bound Party Chief

I, GREGORY B. MARENGO  
 REGISTERED LAND SURVEYOR

certify that this Corner Record correctly represents work performed by me or under my direction in compliance with the "Corner Recordation Act" (70-22-101, et seq., M.C.A.)

Gregory B. Marango  
 Signature of Surveyor & Seal

Date: 5-11-88 Reg. No. 9012 S

Employer: \_\_\_\_\_

Office of Clerk and Recorder, County of Lake. This "corner record" was filed for record on May 17, 1988 at 9:46 AM. and was noted on the cross-index plat and is assigned Microfilm No. 312244, in File No. C-1588

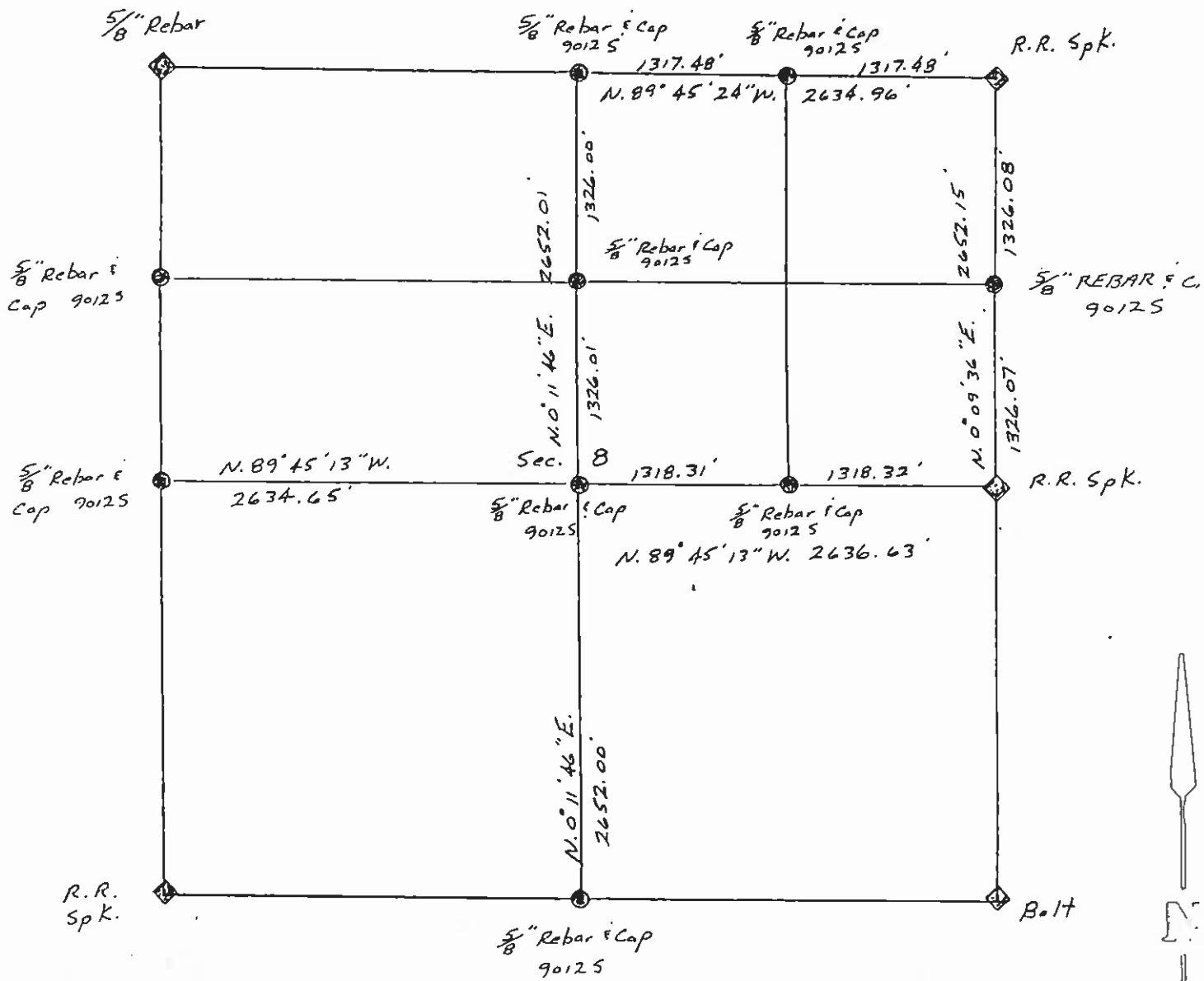
LORIN JACOBSON by Candace Miller  
 County Official deputy

Cross Index No. J-5 T. 18 N R. 19 W PMM

Sec. 8


• - corner this sheet

Sec. 8, T. 11 N. R. 19 W. P. M. M. Lake County  
312244



Legend

- Set  $\frac{5}{8}$ " Rebar & Cap "9012 S"
- ◆ Found Monument