

INSTRUCTIONS

1. Original and/or subsequent used to evaluate the corner position.
2. Description of evidence found to state discrepancies in the record, state method of establishing location of corners.
3. Description of monument and accessories set to perpetuate the corner position.
4. Sketch of corner, show all pertinent data which can best be shown in a sketch example, corner marking, topography ties, position of accessories, etc.
5. Certification must be signed and sealed by Land Surveyor registered in the State of Montana.
6. Fill in Cross Index & Section Diagram at bottom of sheet.

61-402378

CERTIFIED CORNER RECORDATION

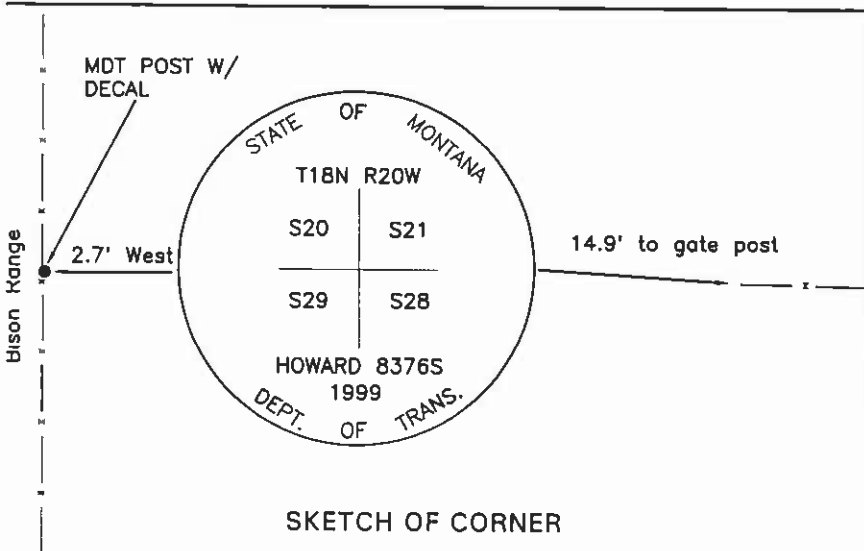
Corner: Section Corner 20, 21, 28, & 29 T. 18N R. 20W P.M.M. Lake County

ORIGINAL RECORD: (1904 G.L.O.) Set a sandstone, 15x7x6 ins., 10 ins. in the ground marked with 4 notches on E. and 2 notches on S. edge; and raise a mound of stone, 2 ft. base, 1.5 ft. high, W. of corner.

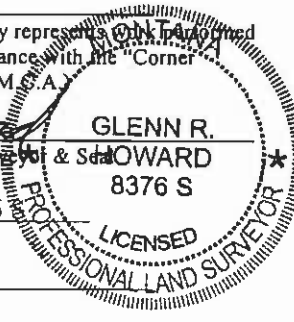
SUBSEQUENT RECORD: See corner recordation #269007, set 3 corner reference tags.

EVIDENCE FOUND: Found a set stone with notches.

PERPETUATION: Set a 3 1/4" MDT aluminum cap on a 30" aluminum pipe in the position of the stone, with the stone buried alongside. The cap is marked as shown in the sketch. From which;
 A fence post bears N28°W, 6.4' distant; with a MARLS tag.
 A fence post bears S28°W, 7.5' distant; with a MARLS tag
 A MDOH post bears West, 2.7' distant.



CERTIFICATION
 I, Steve Cummings
 certify the information shown herein is true and correct.
Steve Cummings
 Signature Ground Party Chief
 I, Glenn R. Howard
 certify that this Corner Record correctly represents the information furnished by me or under my direction in compliance with the "Corner Recordation Act" (70-22-101, et seq., M.C.A.)
Glenn R. Howard
 Signature of Surveyor & Seal
 Date: 8-31-99 Reg. No. 8376
 Employer: DJ&A, P.C.



Office of Clerk and Recorder, County of Lake. This "corner record" was filed for record on SEP 1 1999 at 1:55 pm. It is noted on the cross index plat and is assigned page No. 402378, in Book No. 2283 by RUTH E. [Signature] County Official. Cross Index No. R-9 T. 18N R. 20W PMM

