

CERTIFIED LAND CORNER RECORDATION

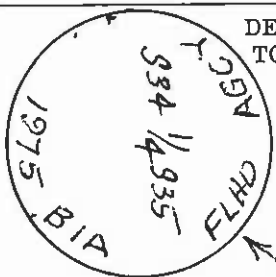
224898

DESCRIPTION OF CORNER EVIDENCE FOUND, AND ORIGINAL RECORD (IF KNOWN)

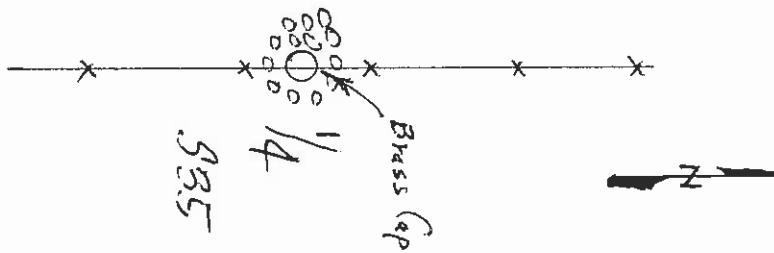
FOUND: No evidence of original. I searched extensively for stone in June 1969 and now Dec. 4, 1975. No evidence of original found. Original terrain call to ridge fits location well. Set 1/4 corner by terrain call and fence line north-south.

ORIGINAL RECORD: Set a sandstone, 12 x 10 x 7 ins., 8 ins., in the ground, for 1/4 section corner marked 1/4 on west face, dig pits, 18 x 18 x 12 inches, north and south of stone 3-foot distant and raise a mound of earth 3 1/2 feet base, 1 1/2 feet high west of corner. 42-chains cross ridge slopes N. 15° W.

DESCRIPTION OF MONUMENT AND ACCESSORIES ESTABLISHED TO PERPETUATE THE ORIGINAL LOCATION OF THIS CORNER:



2" Dia. Brass Cap stamped



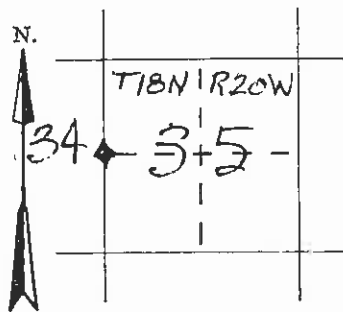
Date of work: Dec. 4, 1975

SKETCH, WITH COURSE AND DISTANCE TO ADJACENT CORNERS IF DETERMINED IN THIS SURVEY. (MAY SKETCH OR PASTE REPRODUCTION ON REVERSE SIDE.)



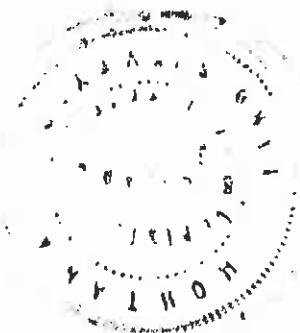
OVER

DIAGRAM OF CORNER:



◆ = Corner recorded on the sheet

Surveyor's Seal



I, \_\_\_\_\_ certify that the information shown herein is true and correct.

Signature of Ground Party Chief

I, Christopher Balstad Jr. certify that I have carefully performed or reviewed the work done on the diagrammed corner as reported on this recordation form and approve the same.

Signature of Christopher Balstad Jr. Signature of Surveyor

33228 Registration Number

Office of Clerk and Recorder, County of Lake, State of Montana

This "corner record" was filed for record on the 12th day of December 1975 at 8:55 o'clock A.M. was noted on the cross-index plat and is assigned page No. 224898, in book No. C-616

Ethel M. Harding, Clerk & Recorder County Official By [Signature], Dep

Cross Index No. X-17 T. 18 N. R. 20 W. Mer.