

INSTRUCTIONS

1. Original and/or subsequent record used to evaluate the corner position.
2. Description of evidence found, note discrepancies in the record, state method of establishing lost or obliterated corners.
3. Description of monument and accessories set to perpetuate the corner position.
4. Sketch of corner, show all pertinent data which can best be shown in a sketch example, corner marking, topography ties, position of accessories, etc.
5. Certification must be signed and sealed by Land Surveyor registered in the State of Montana.
6. Fill in Cross Index & Section Diagram at bottom of sheet.

CERTIFIED CORNER RECORDATION

1/4 Corner Sections 15 & 14 T. 18 N. R. 20 W. P.M.M. Lake County

ORIGINAL RECORD: (1906 G.L.O.)

A sandstone, 13" X 8" X 5", 9" in the ground, marked 1/4 on west face, from which:  
 A 4" juniper, bears N 56 3/4° W, 302 lks. distance, marked 1/4 S15 BT.  
 A 2" juniper, bears S 35 3/4° E, 31 lks. distance, marked 1/4 S14 BT.

SUBSEQUENT RECORD: (Balstad 1972: Recordation Form #202696)

At the 1/4 corner, between Sections 14 and 15, T. 18 N., R. 20 W., I find:  
 A set stone in the ground, marked 1/4 on west face. No BT's.

EVIDENCE FOUND: Found 3 1/4" Brass Cap, 0.3' above ground. No stone found.

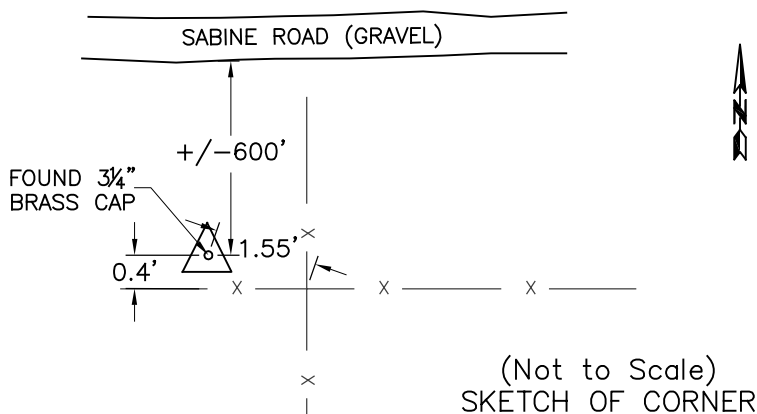
Monument lies 0.4' north of east-west running fenceline and 1.55' westerly of fence intersection.

PERPETUATION: Left monument as found.

Date of Survey: September, 2010.



NAD 83 coordinates for this corner:  
 Latitude = 47° 19' 10.08" N Longitude = 114° 07' 05.60" W  
 NOTE: These coordinates are to be used as a search tool only.



CERTIFICATION

I, Steve Cummings  
 certify the information shown herein is true and correct.

\_\_\_\_\_  
 Signature Ground Party Chief

I, Kurt A. Luebke  
 certify that this Corner Record correctly represents work performed by me or under my direction in compliance with the "Corner Recordation Act" (70-22-101, et seq., M.C.A.)

\_\_\_\_\_  
 Signature of Surveyor & Seal

Date: 11-22-2010 Reg. No. 13237 S

Employer: DJ&A P. C.

