

CERTIFIED LAND CORNER RECORDATION

224897

DESCRIPTION OF CORNER EVIDENCE FOUND, AND ORIGINAL RECORD (IF KNOWN)

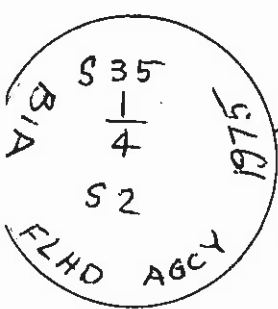
FOUND: No evidence of original stone. The terrain call to old road fits fence line east-west and approximate north-south fence junction. Set brass cap.

ORIGINAL RECORD: 40.00 Top of ridge, slopes N. 15°W. Set a shale stone, 13 x 8 x 7 ins., 9-ins. in the ground, for 1/4 sec. cor., makred 1/4 on N. face; and raise a mound of stone, 2 ft. base 1 1/2 ft. high N. of cor. Pits impractical Dese on N.E. Slope, 150 ft.,

41.17 Old wagon road, bears N. 55° W. and S. 55° E.

DESCRIPTION OF MONUMENT AND ACCESSORIES ESTABLISHED TO PERPETUATE THE ORIGINAL LOCATION OF THIS CORNER:

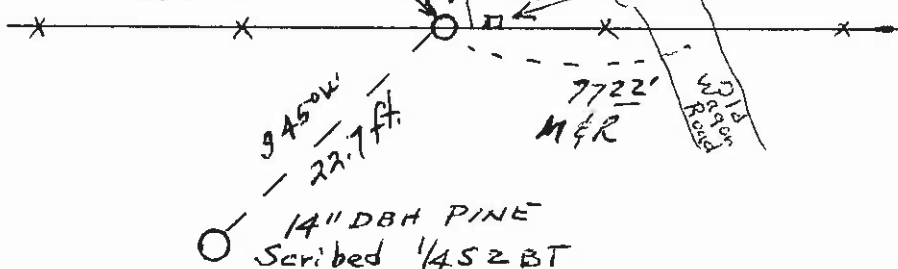
Date of work: Dec. 2, 1975



2" DIA. Brass Cap set at record call from E of old roadway & center line fence.

26" DBH FIR w/ Tag

Railroad tie post with reference tag 20 ft. east.



SKETCH, WITH COURSE AND DISTANCE TO ADJACENT CORNERS IF DETERMINED IN THIS SURVEY. (MAY SKETCH OR PASTE REPRODUCTION ON REVERSE SIDE.)

OVER



DIAGRAM OF CORNER:

Surveyor's Seal

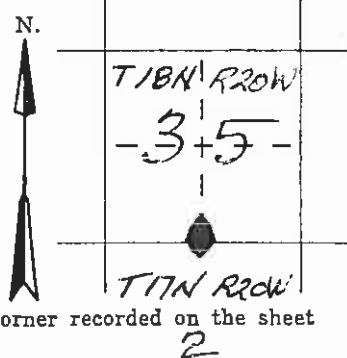
I, \_\_\_\_\_ certify that the information shown herein is true and correct.

Signature of Ground Party Chief

I, Christopher Balstad Jr. certify that I have carefully performed or reviewed the work done on the diagrammed corner as reported on this recordation form and approve the same.

Signature of Christopher Balstad Jr. Signature of Surveyor

33225 Registration Number



◆ = Corner recorded on the sheet 2



Office of Clerk and Recorder, County of Lake, State of Montana

This "corner record" was filed for record on the 12th day of December 1975, at 8:50 o'clock A.M. and is assigned page No. 224897, in book No. C-615

Ethel M. Harding, Clerk & Recorder County Official By: G. Wilson, De

Cross Index No. Z-19 T. 18N. R. 20W Mer.