

INSTRUCTIONS

1. Original and/or subsequent used to evaluate the corner position.
2. Description of evidence found to note discrepancies in the record, state method of establishing location of corner.
3. Description of monument and accessories set to perpetuate the corner position.
4. Sketch of corner, show all pertinent data which can best be shown in a sketch example, corner marking, topography ties, position of accessories, etc.
5. Certification must be signed and sealed by Land Surveyor registered in the State of Montana.
6. Fill in Cross Index & Section Diagram at bottom of sheet.

61- 402365

CERTIFIED CORNER RECORDATION

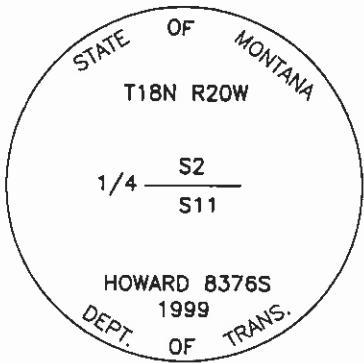
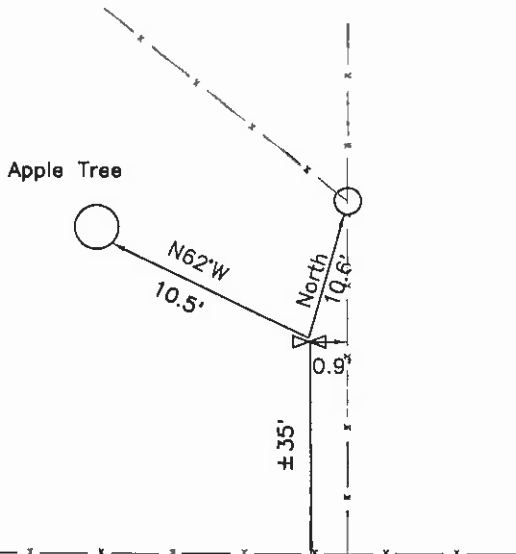
Corner: 1/4 Section Corner 2 & 11 T. 18N R. 20W P.M.M. Lake County

ORIGINAL RECORD: (1904 G.L.O.) Set a limestone, 13x8x7 ins., 9 ins. in the ground marked 1/4 on N. face; from which:
 An aspen, 6 ins. diam., bears S50 $\frac{3}{4}$ °E, 37 lks. dist., marked "1/4 S11 BT"
 An aspen, 5 ins. diam., bears N51 $\frac{3}{4}$ °E, 51 lks. dist., marked "1/4 S2 BT"

SUBSEQUENT RECORD: None.

EVIDENCE FOUND: Found a 12"x9"x7" limestone with "1/4" marked on the N. face.

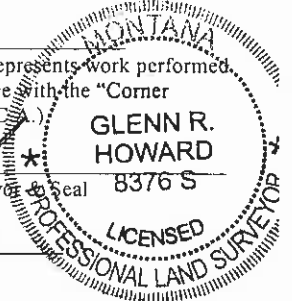
PERPETUATION: Set a 3 1/4" MDT aluminum cap on a 30" aluminum pipe in the position of the stone, with the stone buried alongside. The cap is marked as shown in the sketch. From which;
 A fence angle post bears North, 10.6' distant; with a MARLS tag
 An apple tree bears N62°W, 10.5' distant; with a MARLS tag



SKETCH OF CORNER

CERTIFICATION
 I, Kurt Luebke (13237 LSI)
 certify the information shown herein is true and correct.
Kurt Luebke
 Signature Ground Party Chief

I, Glenn R. Howard
 certify that this Corner Record correctly represents work performed by me or under my direction in compliance with the "Corner Recordation Act" (70-22-101, et seq., M.C.A.).
Glenn R. Howard
 Signature of Surveyor



Date: 8-31-99 Reg. No. 8376 S

Employer: DJ&A, P.C.

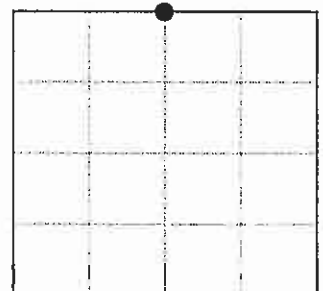
Office of Clerk and Recorder, County of Lake. This "corner record" was filed for record on SEP 1 1999 1:39 pm

was noted on the cross index plat and is assigned page No. 402365, in

book No. Q 2270
RUTH E. HODGES By Judy Murray
 County Official

Cross Index No. E-19 T. 18N R. 20W P.M.M.

Sec. 11



•- corner this sheet