

CERTIFIED LAND CORNER RECORDATION

DESCRIPTION OF CORNER EVIDENCE FOUND, AND ORIGINAL RECORD (IF KNOWN)

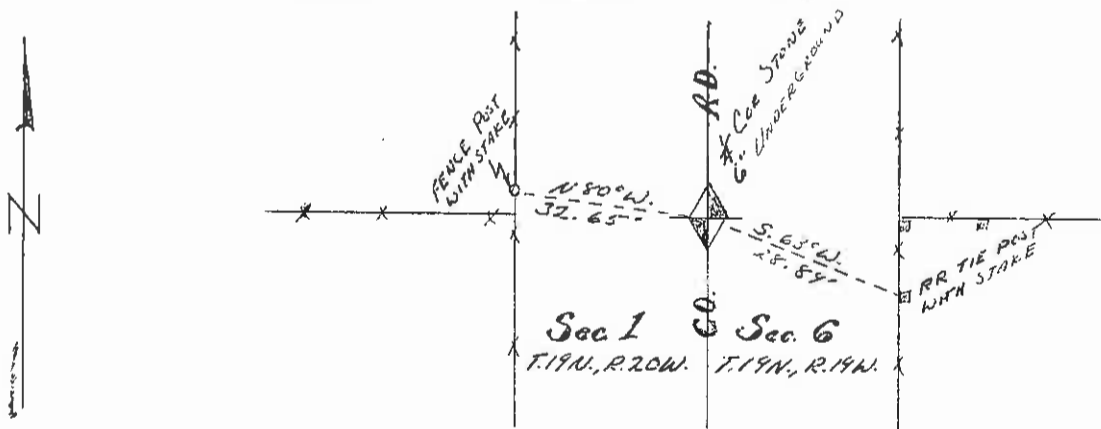
- 40.00 Set a sandstone, 17x10x8 ins., 12 ins., in the ground for ¼ sec. cor., marked ½ on W. face; and raise a mound of stone, 2 ft. base, 1½ ft. high, W. of cor.,
- 45.00 Enter small shallow pond, bears N. 30° W., and S. 30° E.,
- 47.50 Leave pond, bears N. 60° E., and S. 60° W.,

The original ¼ stone was found lying on top of the ground. It apparently had been out of the ground for a number of years as it was covered with moss. I reset the stone by a product of the existing fences east and west plus the projection of a line from point K, a found stone, on the Kicking Horse Reservoir survey and the ¼ corner found stone, of Sections 36, T. 20 N., R. 20 W., and Section 31, T. 20 N., R. 19 W.

DESCRIPTION OF MONUMENT AND ACCESSORIES ESTABLISHED TO PERPETUATE THE ORIGINAL LOCATION OF THIS CORNER:

Date of work: 6-7-73

SKETCH, WITH COURSE AND DISTANCE TO ADJACENT CORNERS IF DETERMINED IN THIS SURVEY. (MAY SKETCH OR PASTE REPRODUCTION ON REVERSE SIDE.)



Surveyor's Seal

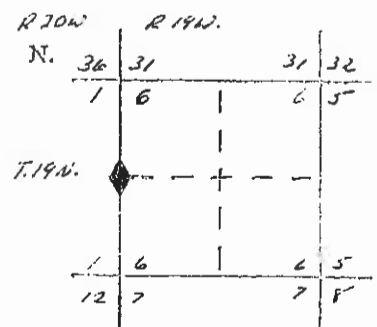
I, _____
certify that the information shown herein is true and correct.

Signature of Ground Party Chief

I, Christopher Balstad Jr.
certify that I have carefully performed _____ the work done on the diagrammed corner as reported on this recordation form and approve the same.

Christopher Balstad Jr.
Signature of Surveyor

DIAGRAM OF CORNER:



◆ == Corner recorded on the sheet

33225
Registration Number

ice of Clerk and Recorder, County of Lake

s "corner record" was filed for record on the 15 day of June, 1973 was noted on the cross-index plat and is

igned page No. Micro, in book No. Film 210165 _____
County Official Elaine Chapman

Cross Index No. 0-1 T. 19 R. 19 Sec. 20