

- INSTRUCTIONS**
1. Original and/or subsequent record used to evaluate the corner position.
 2. Description of evidence found, note discrepancies in the record, state method of establishing lost or obliterated corners.
 3. Description of monument and accessories set to perpetuate the corner position.
 4. Sketch of corner, show all pertinent data which can best be shown in a sketch example, corner marking, topography ties, position of accessories, etc.
 5. Certification must be signed and sealed by Land Surveyor registered in the State of Montana.
 6. Fill in Cross Index & Section Diagram at bottom of sheet.

459770

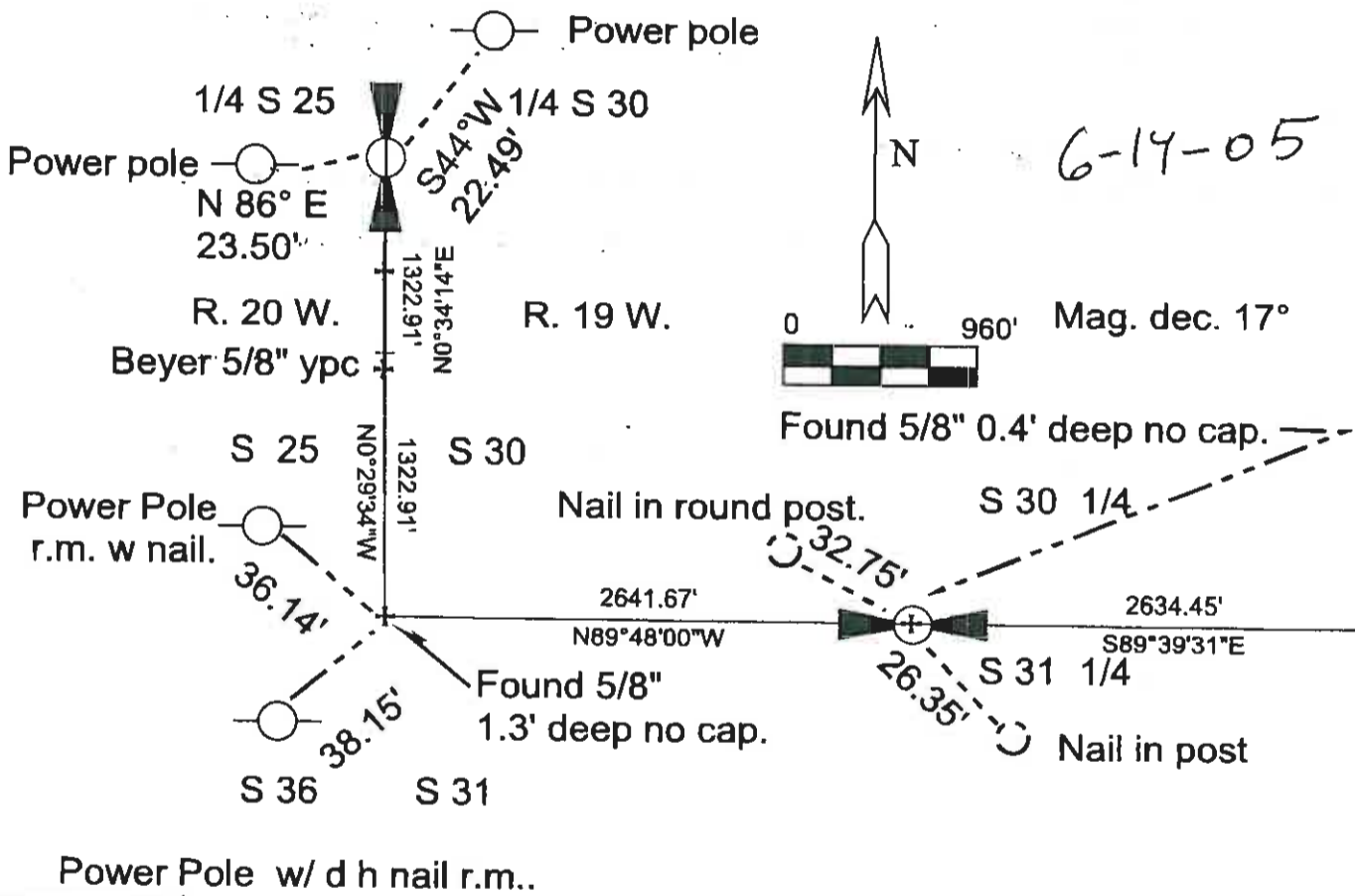
CERTIFIED CORNER RECORDATION

Corner **30.31** T. **19N** R. **19W** P.M.M. **LAKE** County
25.36 **T19N R20W LAKE**

Previously filed by Harry Medland Oct. 1972 207594.

Irrigation culvert in cor. pos. set mon. as described.

Set 4 1/5" chromed cotten gin shaft @
 1/4 position projection from south.



Power Pole w/ d h nail r.m..

SKETCH OF CORNER

CERTIFICATION

I, CHRISTOPHER BAUSTAD JR.
 County Surveyor,
 certify that this Corner Record correctly represents work performed by me or under my direction in compliance with the "Corner Recordation Act" (70-22401, 23 seq., M.C.A.)

Christopher Baustad Jr.
 Signature of Surveyor & Seal

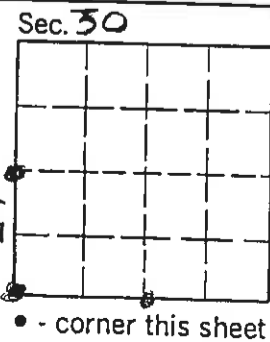
Date: 6/14/05 Reg. No. 33225

Employer: _____

Office of Clerk and Recorder, County of LAKE. This "corner record" was filed for record on JUL 01 2005 at 1:09 p.m. was noted on the cross-index plat and is assigned page No. 459770, in book No. C-2626

RUTH E. HODGES *Ruth E. Hodges*
 County Official

T 25 T 19N R 20W T 1
 V 25 T 19N R 20W Cross Index No. 3 T. 19N R. 19W P.M.M.



file N/C