

INSTRUCTIONS

1. Original and/or subsequent record used to evaluate the corner position.
2. Description of evidence found, note discrepancies in the record, state method of establishing lost or obliterated corners.
3. Description of monument and accessories set to perpetuate the corner position.
4. Sketch of corner, show all pertinent data which can best be shown in a sketch example, corner marking, topography ties, position of accessories, etc.
5. Certification must be signed and sealed by Land Surveyor registered in the State of Montana.
6. Fill in Cross Index & Section Diagram at bottom of sheet.

61-299445

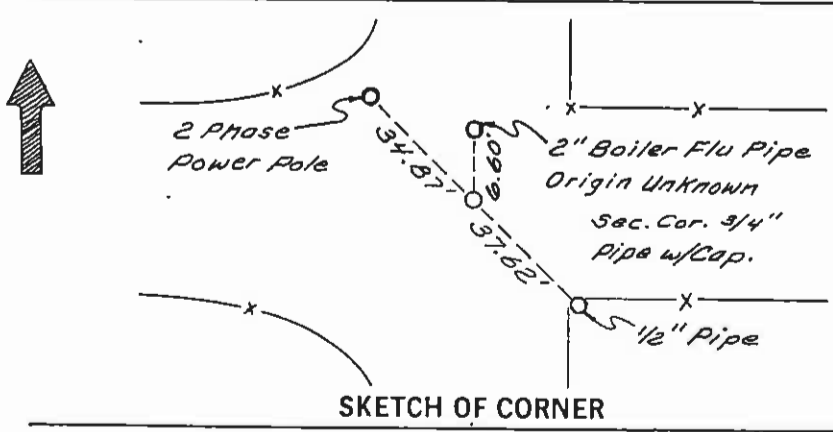
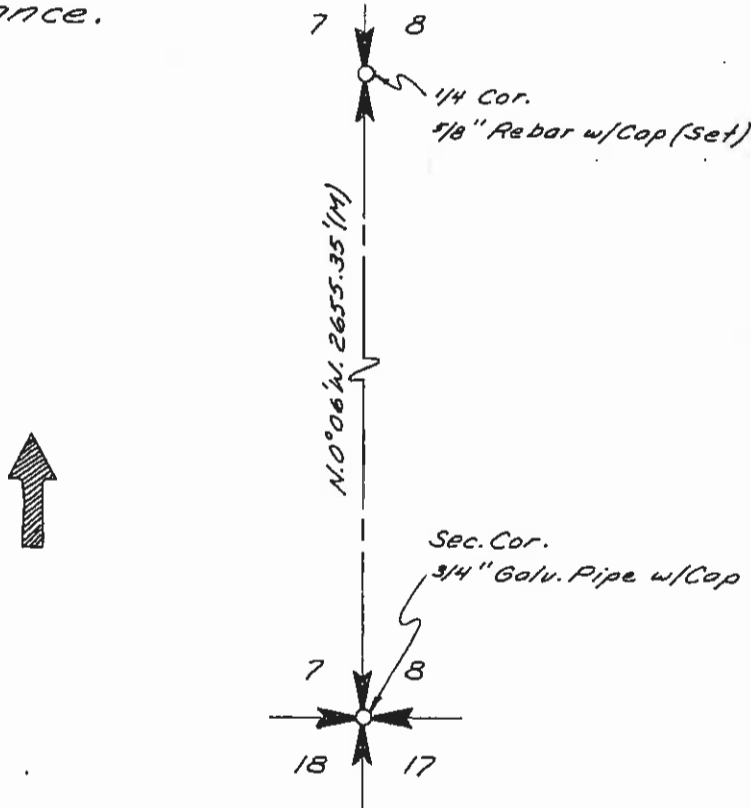
7-10-86

CERTIFIED CORNER RECORDATION

Corner Sec. Cor. 7, 8, 17 & 18 T. 19N. R. 19W. P.M.M. Lake County

Record: At 80.00 chs. Set a granite stone, 16 x 14 x 6 ins., 11 ins. in the ground, for cor. of secs. 7, 8, 17 and 18, marked with 4 notches on S. and 5 notches on E. edge; and raise a mound of stone, 2 ft. base, 1 1/2 ft. high W. of cor. Pits imp. Land rolling.

Found: The 3/4 inch galv. pipe in county road, 6 inches below roadway grade at center of road intersection that I set, October, 1970. - I fitted the pipe with a plastic cap, marked BIA FLATHEAD, from which a two phase Power Pole, bears Northwesterly., 34.87 ft. distance. A 2 inch Boiler Flu Pipe, bears North., 6.60 ft. distance., and a 1/2 inch Galv. Pipe, bears Southeasterly., 37.62 ft. distance.



CERTIFICATION

I, _____, certify the information shown herein is true and correct.

Signature Ground Party Chief
Christopher A. Flathead Jr.

I, Christopher A. Flathead Jr., certify that this Corner Record correctly represents work performed by me or under my direction in accordance with the "Corner Recordation Act" (70-22-101, et seq.).

Signature of Surveyor Seal
Christopher A. Flathead Jr.

Date: 7-29-86 Rev. No. 33285

Employer: B.I.P. Flathead ASCY, PABLO SURV. MT

Office of Clerk and Recorder, County of Lake, State of Montana. This "corner record" was filed for record on August 11, 1986 at 12:42 P.M. was noted on the cross-index plat and is assigned Microfile No. 299445, in File No. C-1480

LORIN JACOBSON
 County Official
 By: Rafenne Cooper, Deputy
 Cross Index No. J-5 T. 19N. R. 19W. P.M.M.

Sec. 8

| | | | |
|--|--|--|--|
| | | | |
| | | | |
| | | | |
| | | | |

• corner this sheet

n/c