

INSTRUCTIONS

- 1. Original and/or subsequent record used to evaluate the corner position.
- 2. Description of evidence found, note discrepancies in the record, state method of establishing lost or obliterated corners.
- 3. Description of monument and accessories set to perpetuate the corner position.
- 4. Sketch of corner, show all pertinent data which can best be shown in a sketch example, corner marking, topography ties, position of accessories, etc.
- 5. Certification must be signed and sealed by Land Surveyor registered in the State of Montana.
- 6. Fill in Cross Index & Section Diagram at bottom of sheet.

CERTIFIED CORNER RECORDATION

Corner N 1/4 Sec. 32 T. 19 N. R. 19 W. P.M.M. Lake County

ORIGINAL RECORD: Set a sand stone, 18x12x6 ins., 12 ins. in the ground

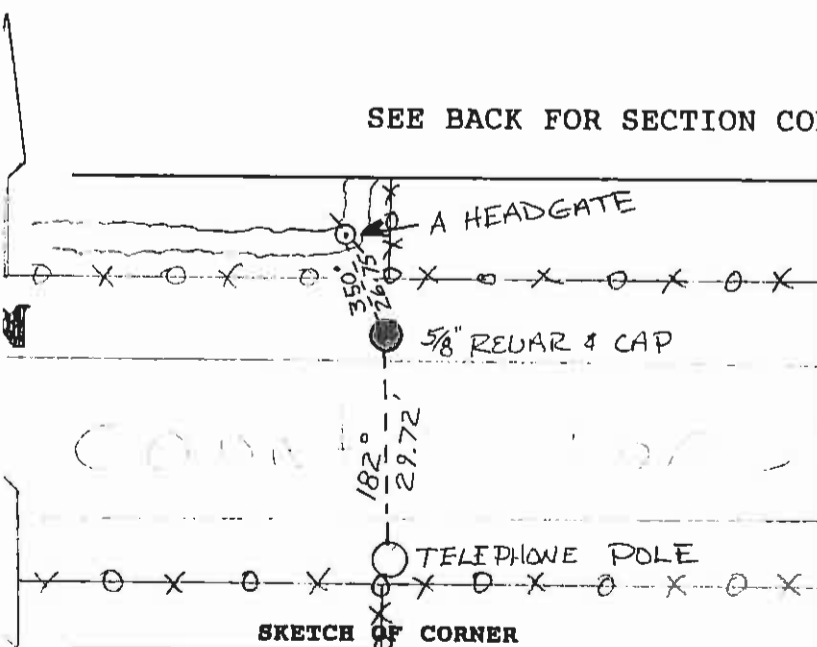
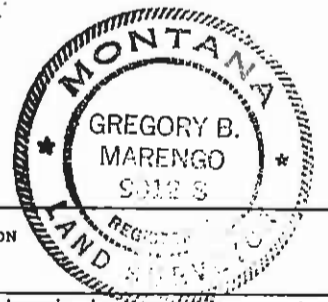
FOUND: No evidence found, corner positioning is in county roadway.

SET: On a straight line between the NE and NW section corners of Section 32 and on the prod of north-south fence line, I set a 5/8" rebar and cap stamped CS&KT RLS 9012 from which:

A telephone pole bears 182° at 29.72'

A headgate shaft bears 350° at 26.75'

SEE BACK FOR SECTION CONTROL



CERTIFICATION

I, _____ certify the information shown herein is true and correct.

Signature Ground Party Chief _____

I, Gregory B. Marengo certify that this Corner Record correctly represents work performed by me or under my direction in compliance with the "Corner Recordation Act" (70-22-101, et seq., M.C.A.)

Gregory B. Marengo
Signature of Surveyor & Seal

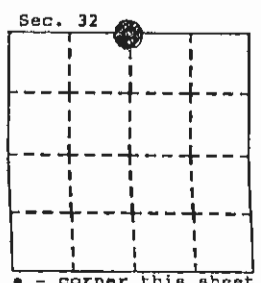
Date: 4/92 Reg. No. 9012

Employer: CS&KT

Office of Clerk and Recorder, County of Lake. This "corner record" was filed for record on 4-18-88 at 10:19 AM **JUN 23 '92** was noted on the cross-index plat and is assigned **339551**, in

Judy Ann Allen
N/c dep.

HODGES
County Official



Cross Index No. V-7 T. 19 N. R. 19 W. PMM

