

CERTIFIED LAND CORNER RECORDATION

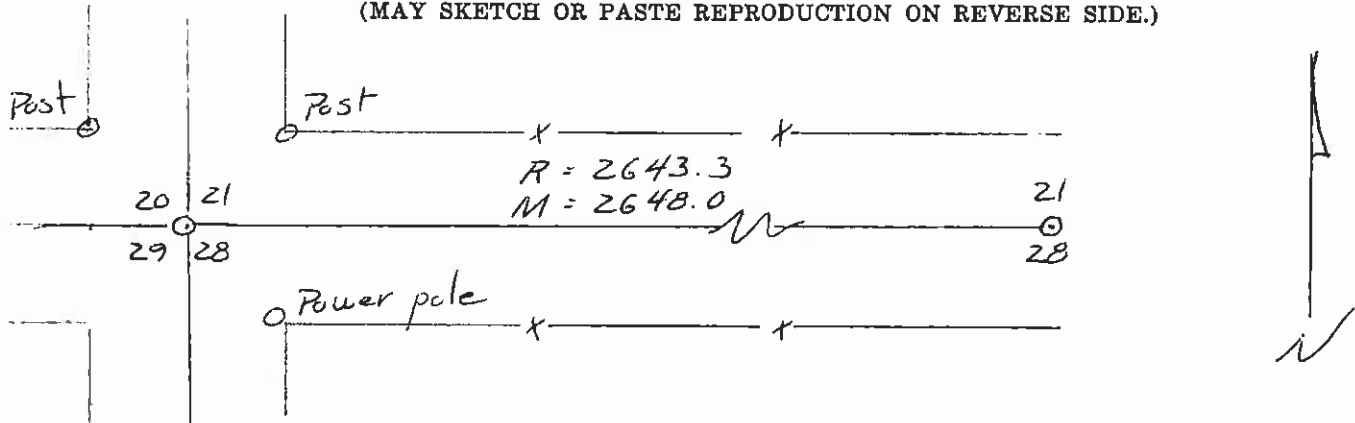
DESCRIPTION OF CORNER EVIDENCE FOUND, AND ORIGINAL RECORD (IF KNOWN)

No evidence of original

DESCRIPTION OF MONUMENT AND ACCESSORIES ESTABLISHED TO PERPETUATE THE ORIGINAL LOCATION OF THIS CORNER:

set a 5/8" x 24" steel pin, 3" below surface at intersection of E of roads, Date of work: Feb 19 70
New ties = Duplex nail in corner post, NE. 33.96 feet
" " " Power pole, SE. 27.20 feet
" " " Corner post, NW. 27.51 feet

SKETCH, WITH COURSE AND DISTANCE TO ADJACENT CORNERS IF DETERMINED IN THIS SURVEY. (MAY SKETCH OR PASTE REPRODUCTION ON REVERSE SIDE.)



Surveyor's Seal

I, \_\_\_\_\_ certify that the information shown herein is true and correct.

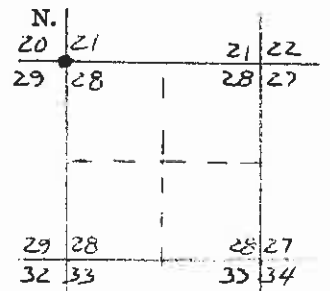
Signature of Ground Party Chief

I, HARRY P. MEDLAND certify that I have carefully performed or reviewed the work done on the diagrammed corner as reported on this recordation form and approve the same.

Signature of Harry P. Medland
Signature of Surveyor

22295
Registration Number

DIAGRAM OF CORNER:



• = Corner recorded on the sheet

T. 19 N.
R. 19 W.
M. P. M.

Office of Clerk and Recorder, County of Lehe
This "corner record" was filed for record on the 13 day of Feb. 1970, was noted on the cross-index plat and is signed page No. 192368, in book No. C-84.
LIME M. HARDING
County Official
Jewel Bertz Deputy
Cross Index No. R-9 T. 19 R. 19 Mer.